



# **FEMA**

## **Daily Operations Briefing**

**Monday, September 26, 2016**

**8:30 a.m. EDT**

# Significant Activity - Sept 23 - 26



**Significant Events:** Iowa Flooding

## **Tropical Activity:**

- Atlantic – Disturbance 1 – Medium (60%); Disturbance 2 – Low (near 0%)
- Eastern Pacific – Tropical Storm Roslyn; Disturbance 1 – High (70%)
- Central Pacific – Disturbance 1 in Eastern Pacific moving into Central Pacific; elsewhere, no tropical cyclones expected through Wednesday morning
- Western Pacific – Invest 98W

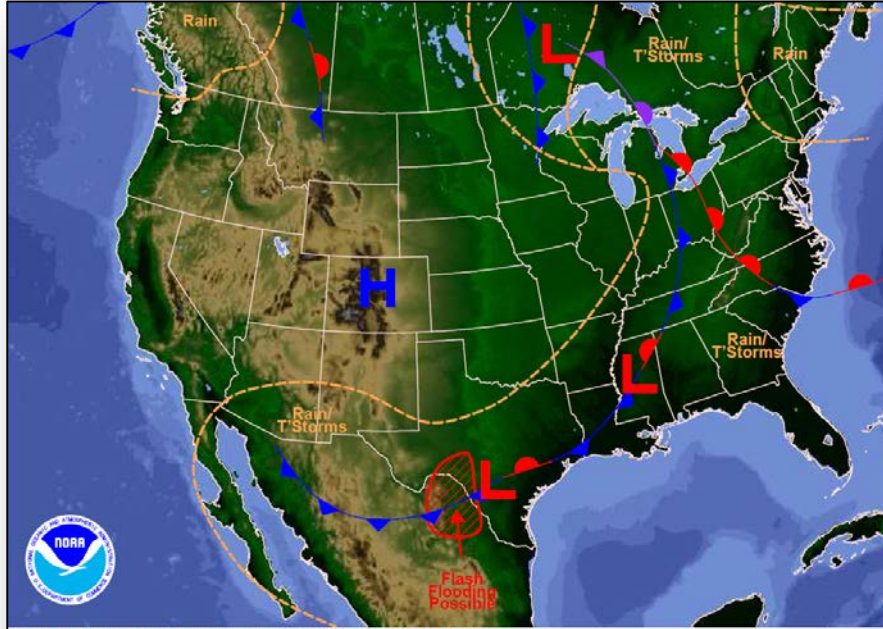
## **Significant Weather:**

- Flash Flooding possible – Southern Plains
- Rain and thunderstorms – Southwest to Southeast, Upper Mississippi Valley, Mid-Atlantic and Great Lakes
- Critical/Elevated Fire Weather – southern CA
- Red Flag Warnings – southern CA
- Space Weather – Minor space weather with G1 geomagnetic storms observed past 24 hours; minor space weather with G1 geomagnetic storms predicted next 24 hours

**Earthquake Activity:** No significant activity

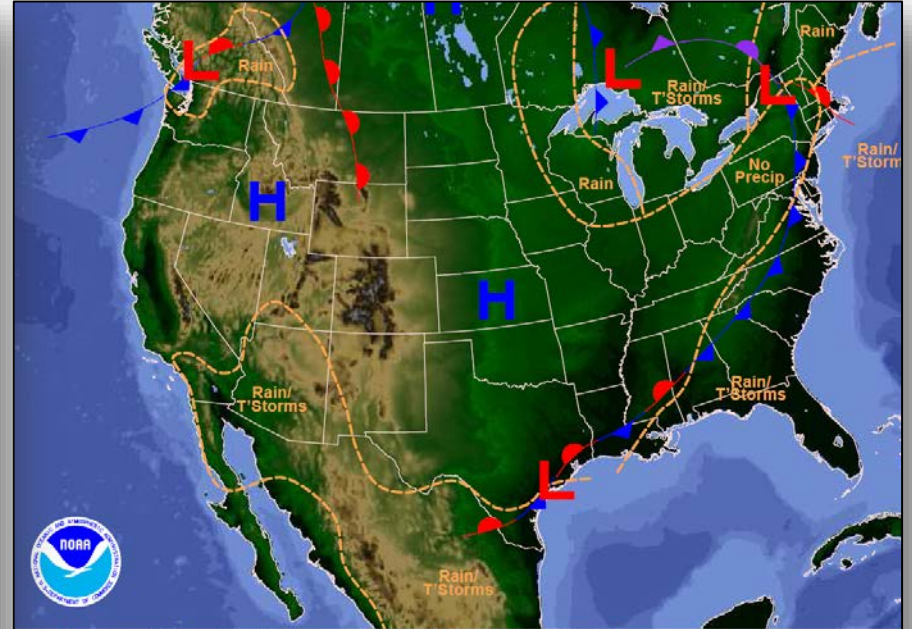
**Declaration Activity:** None

# National Weather Forecast



Weather Forecast for Mon, Sep 26, 2016, issued 4:43 AM EDT  
DOC/NOAA/NWS/NCEP/Weather Prediction Center  
Prepared by McCreynolds based on WPC, SPC and NHC forecasts

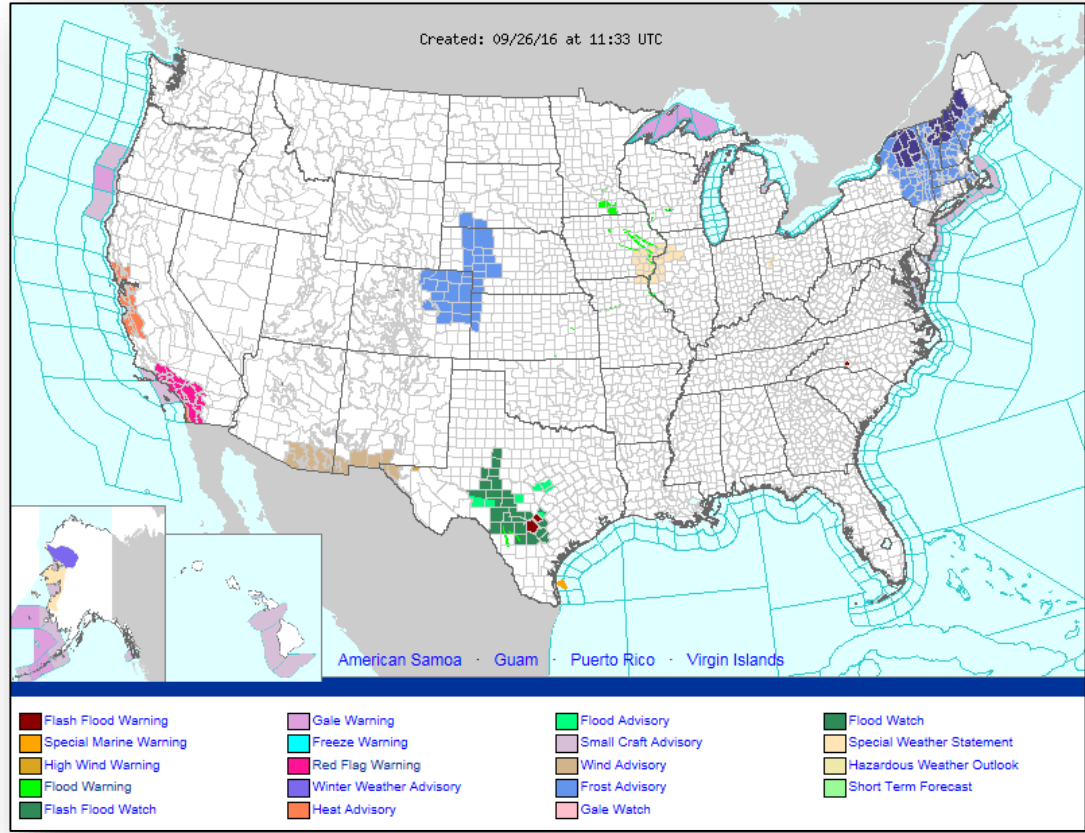
*Today*



Weather Forecast for Tue, Sep 27, 2016, issued 4:46 AM EDT Mon, Sep 26, 2016  
DOC/NOAA/NWS/NCEP/Weather Prediction Center  
Prepared by McCreynolds based on WPC, SPC and NHC forecasts

*Tomorrow*

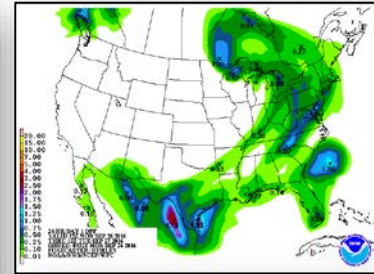
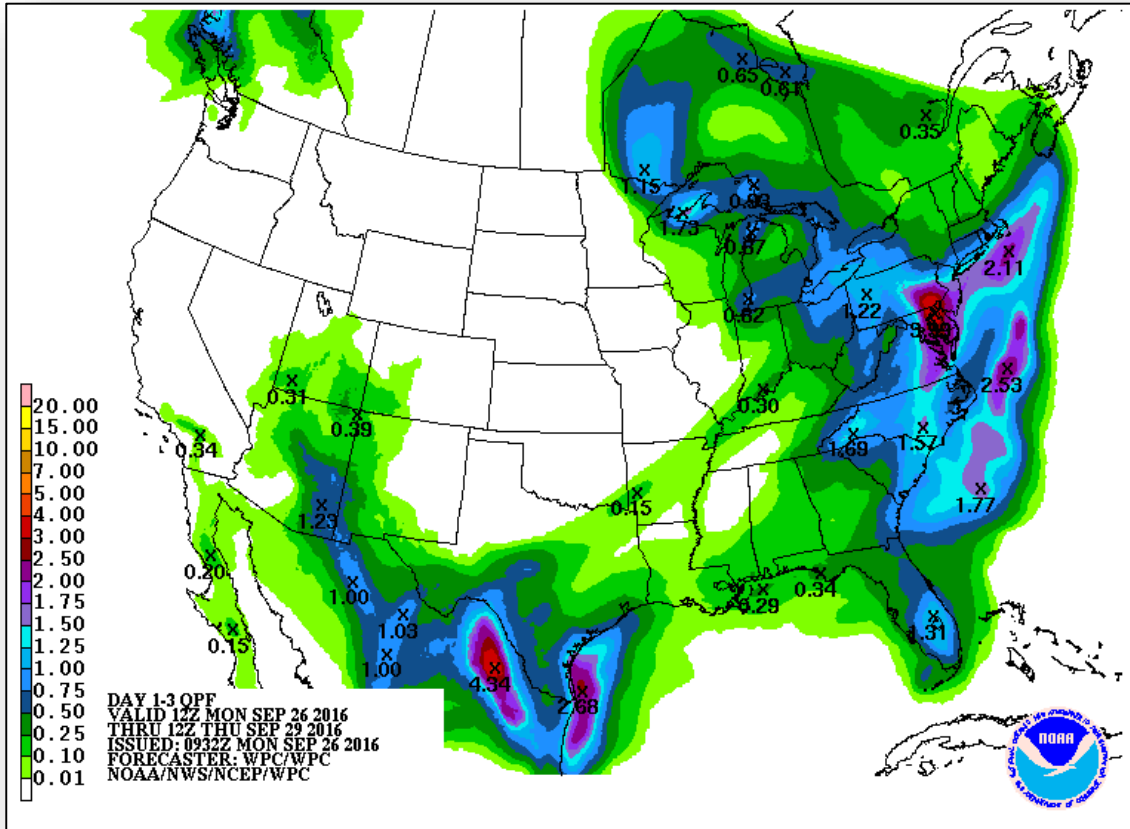
# Active Watches and Warnings



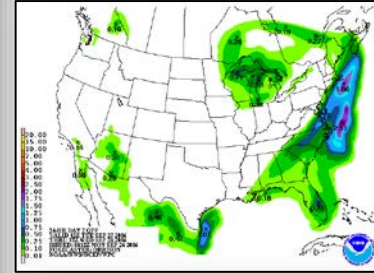
# Precipitation Forecast - Days 1-3



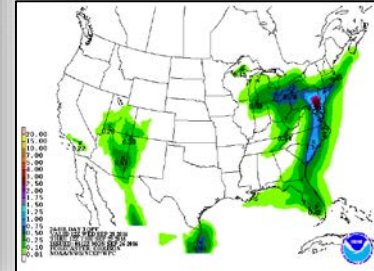
FEMA



Day 1

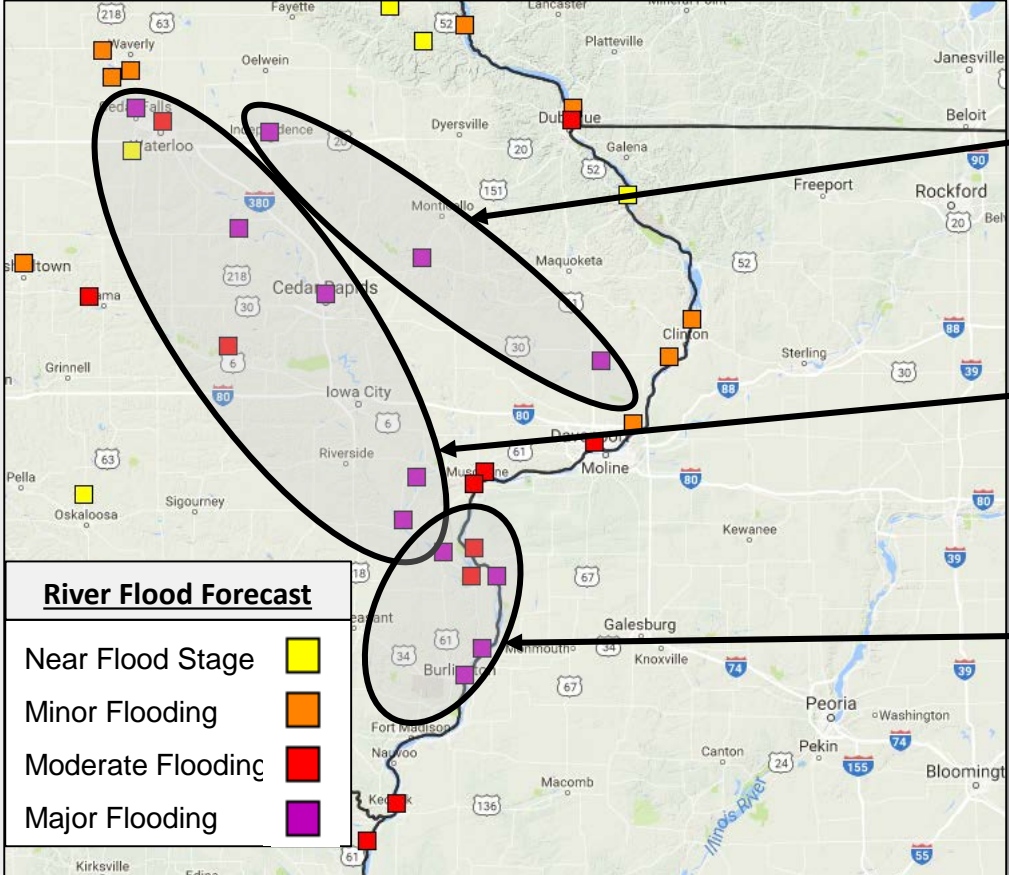


Day 2



Day 3

# Upper Midwest Flooding

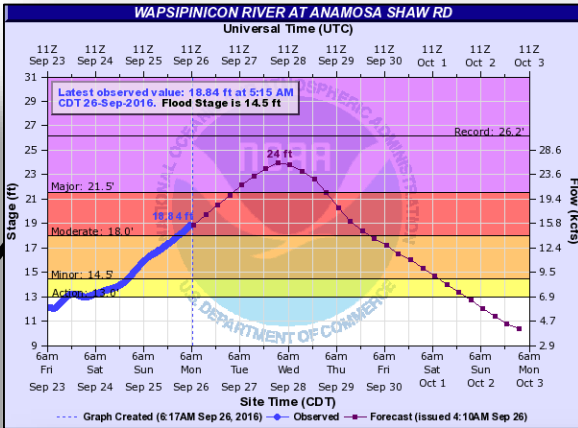
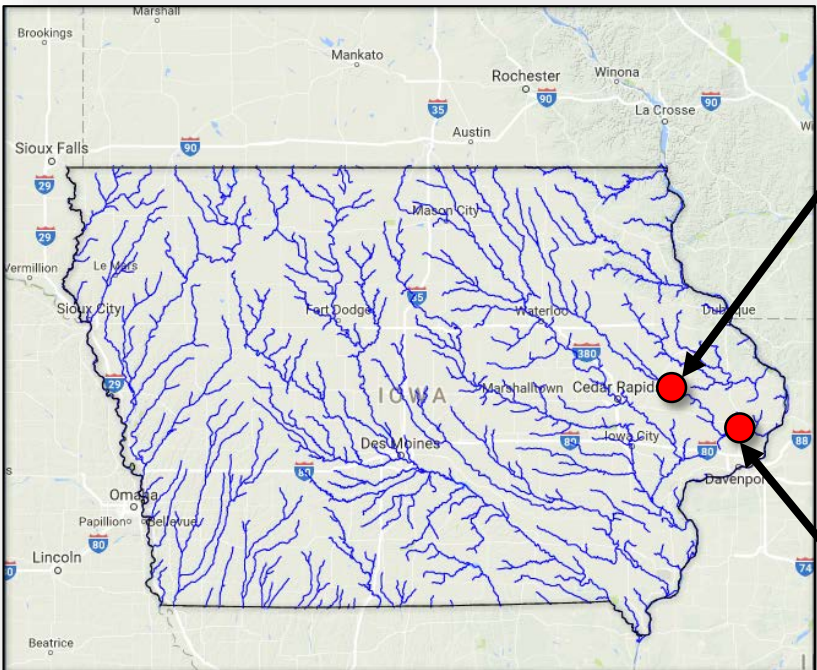


**Wapsipinicon River:**  
Independence (Past Crest) to DeWitt, IA (Crest Late Week)

**Cedar and Iowa Rivers:**  
Cedar Falls (Past Crest) to Oakville, IA (Crest by Weekend)

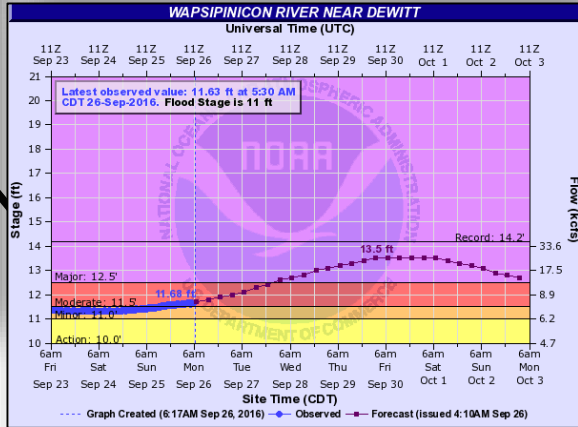
**Mississippi River:**  
Keithsburg, IL to near Keokuk, IA (Crest by Weekend or Early Next Week)

# Wapsipinicon River



**Peak Forecast Crest: 24'**  
by Wednesday

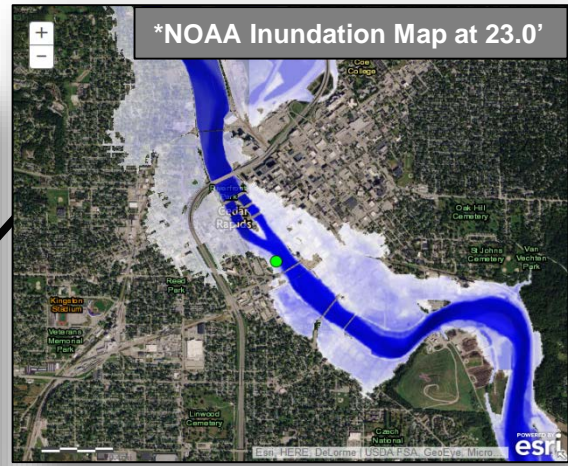
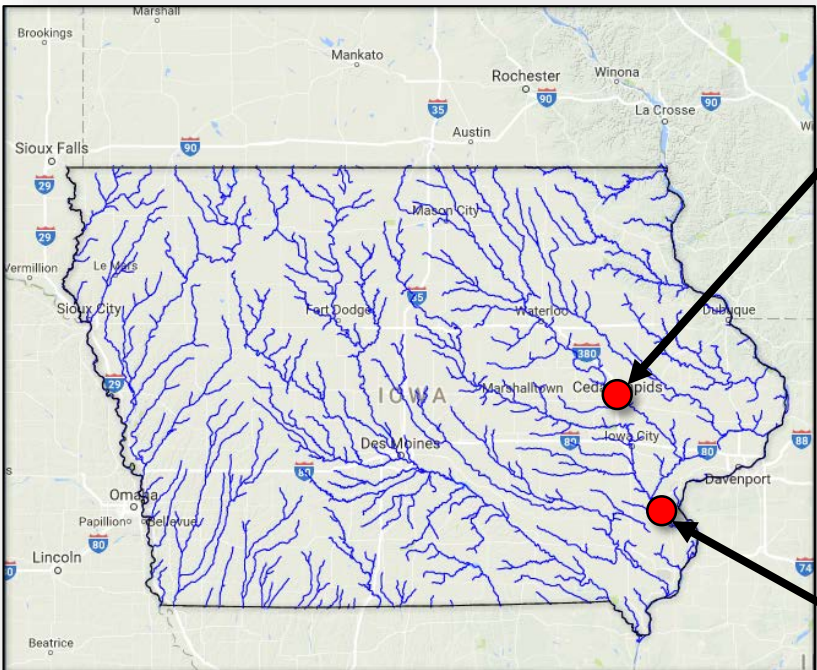
**Impacts:** Bridges and secondary roads are closed



**Peak Forecast Crest: 13.5'**  
by late week

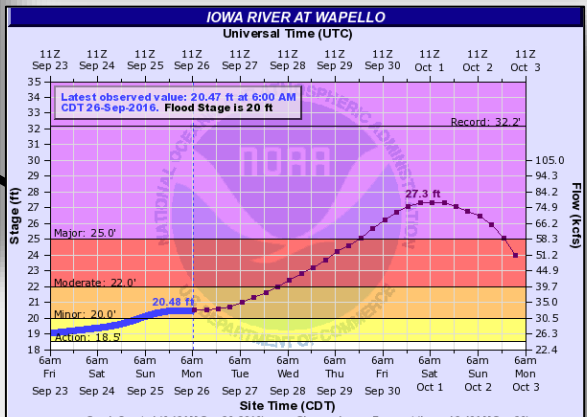
**Impacts:** Water affects residences and businesses along the river between Wheatland and Calamus if no protective measures

# Cedar and Iowa Rivers



**Peak Forecast Crest: 23'**  
by Tuesday

**Impacts:** Several bridges and roads closed; Levee system overtopped at 22.5'; Voluntary evacuations and curfew in place for impacted areas (~1.500 structures)

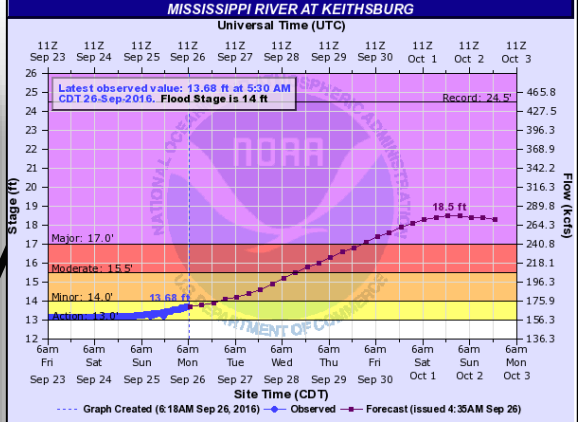
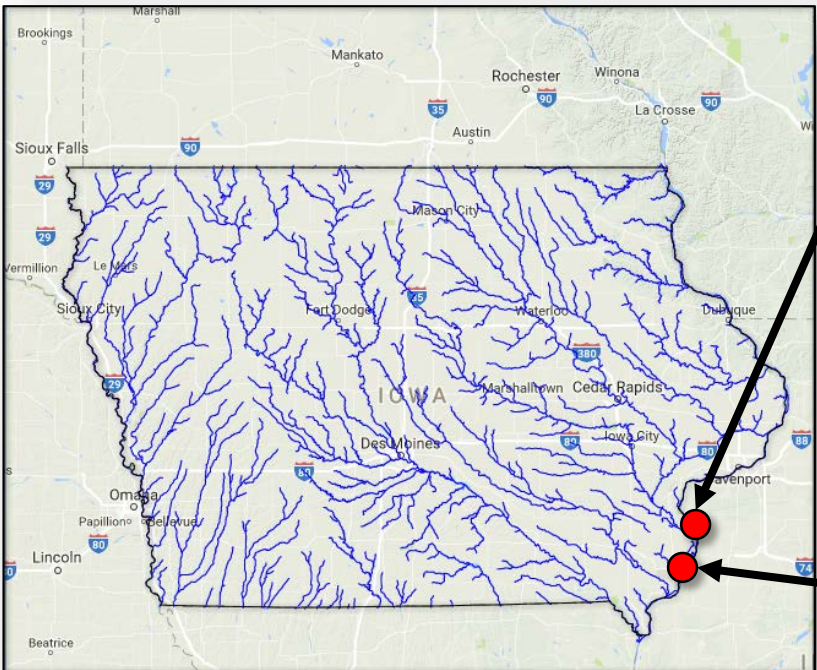


**Peak Forecast Crest: 27.3'**  
by this weekend

**Impacts:** Water reaches bottom of U.S. 61 bridge and nearby residences are flooded if no protective measures

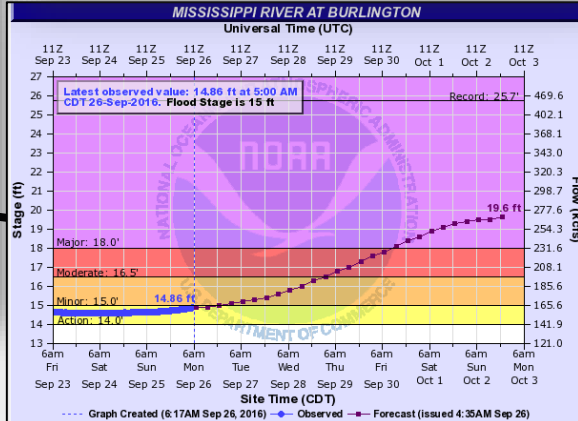


# Mississippi River



**Above Major Flooding by Late Week**

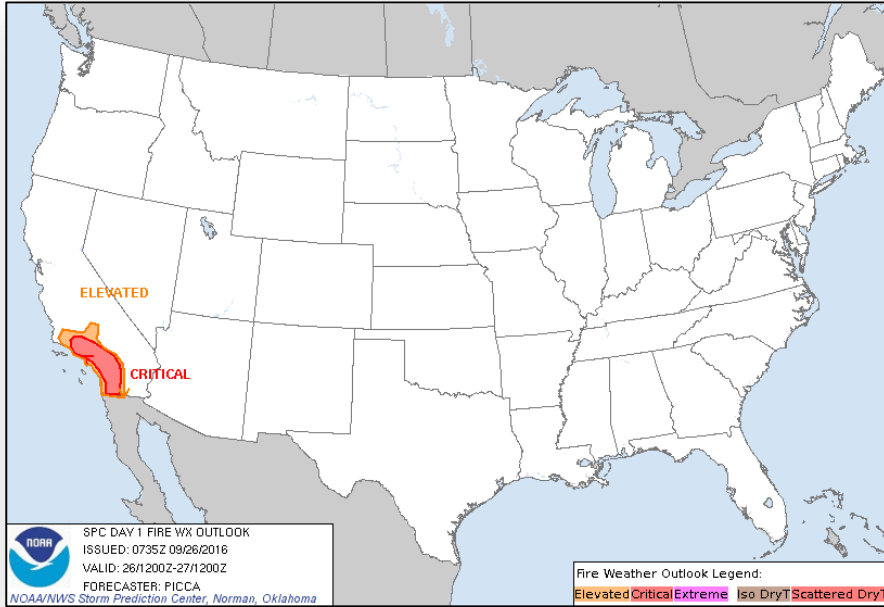
**Impacts:** Water affects city blocks and homes along the river in Keithsburg, IL and Oquawka, IL if no protective measures



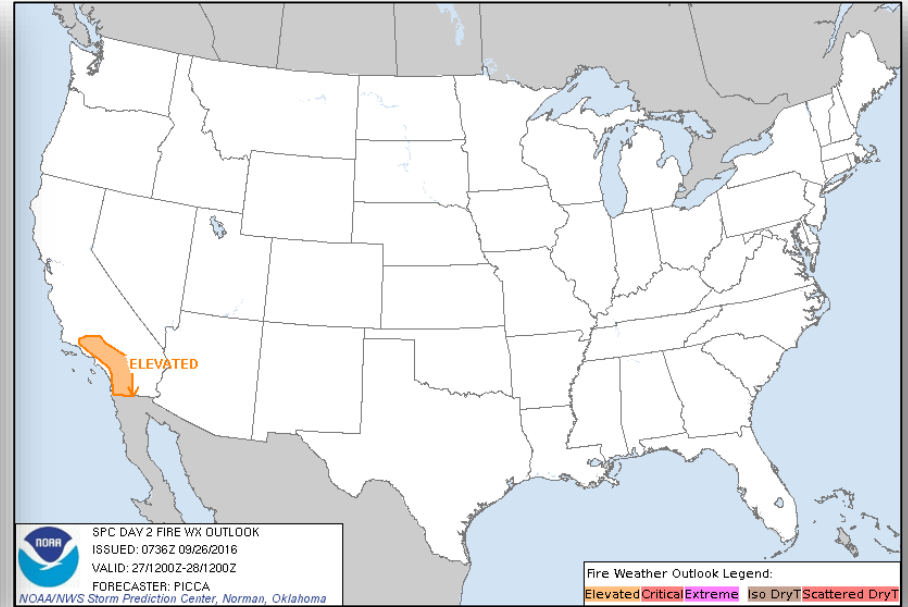
**Above Major Flooding by Late Week**

**Impacts:** Water affect roads along the river in Burlington, IA and low-lying buildings and homes in Montrose, IA and Niota, IL if no protective measures

# Fire Weather Outlook

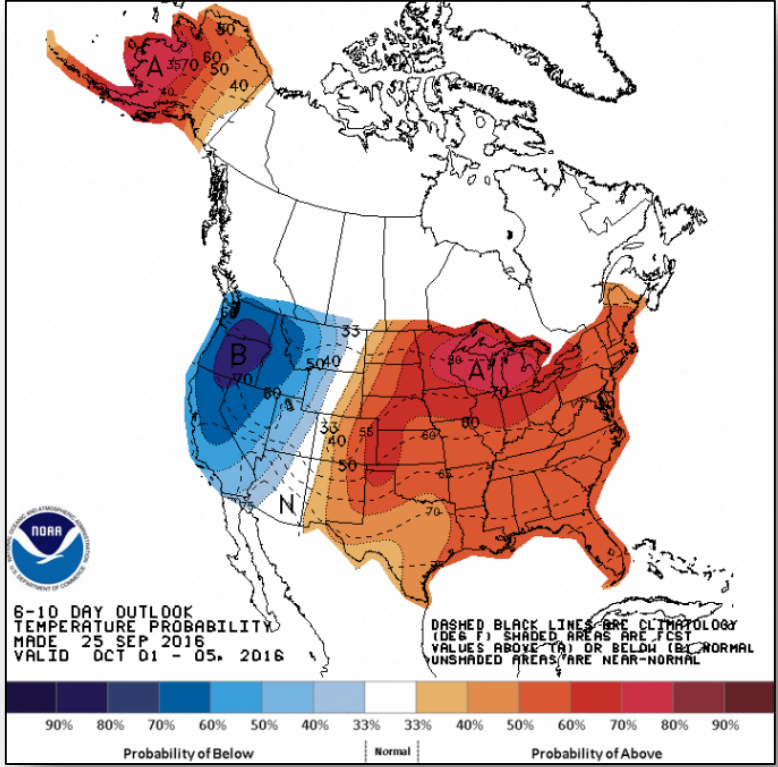


Day 1

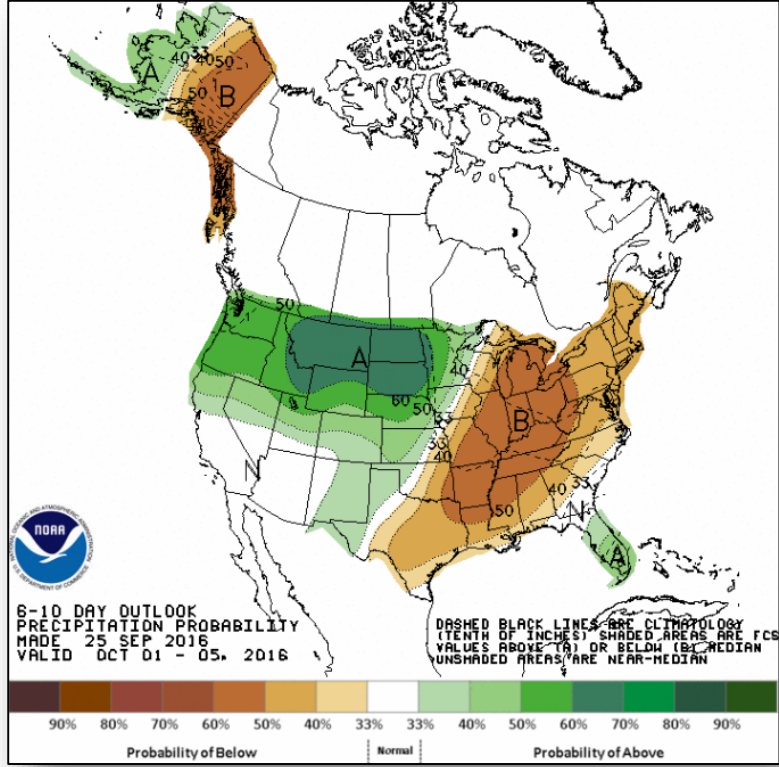


Day 2

# 6-10 Day Outlooks



6 - 10 Day Temperature Probability

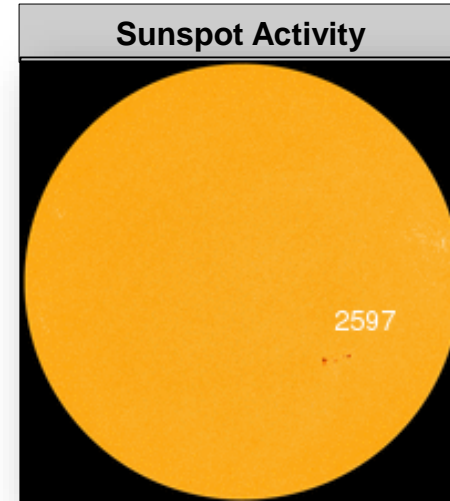
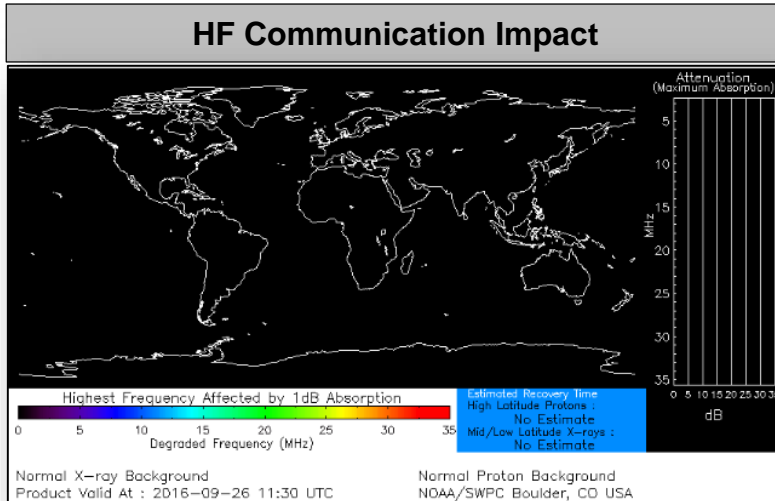


6 - 10 Day Precipitation Probability

# Space Weather

	Space Weather Activity	Geomagnetic Storms	Solar Radiation	Radio Blackouts
Past 24 Hours	Minor	G1	None	None
Next 24 Hours	Minor	G1	None	None

*For further information on NOAA Space Weather Scales refer to <http://www.swpc.noaa.gov/noaa-scales-explanation>*

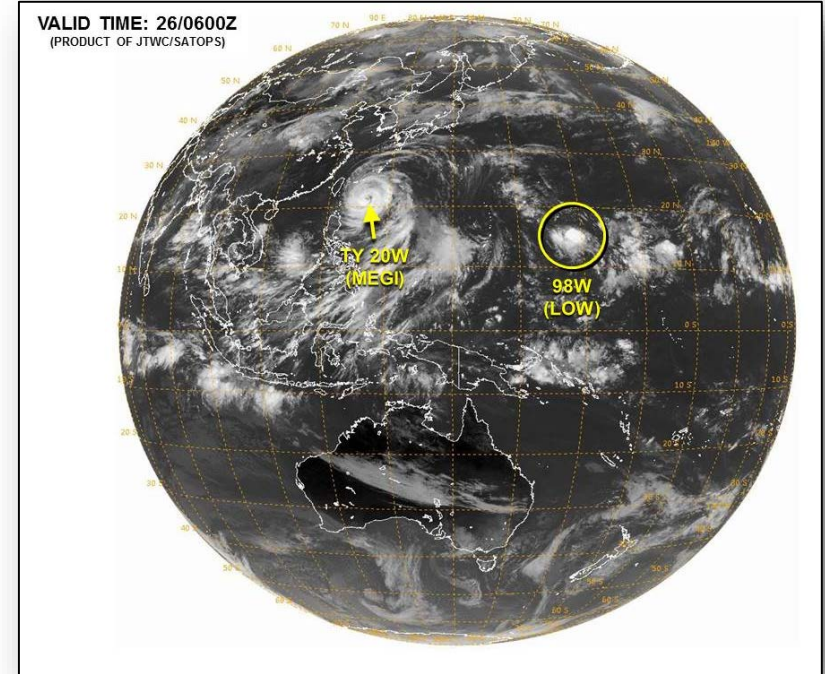


# Tropical Outlook – Western Pacific



## Invest 98W (as of 2:00 a.m. EDT)

- Located 898 miles ENE of Guam
- Moving west next 2-3 days
- Maximum sustained winds 12-17 mph
- Conditions conducive for gradual development
- Tropical depression likely to form later this week
- Formation chance through 24 hours: Low



# Tropical Outlook - Atlantic

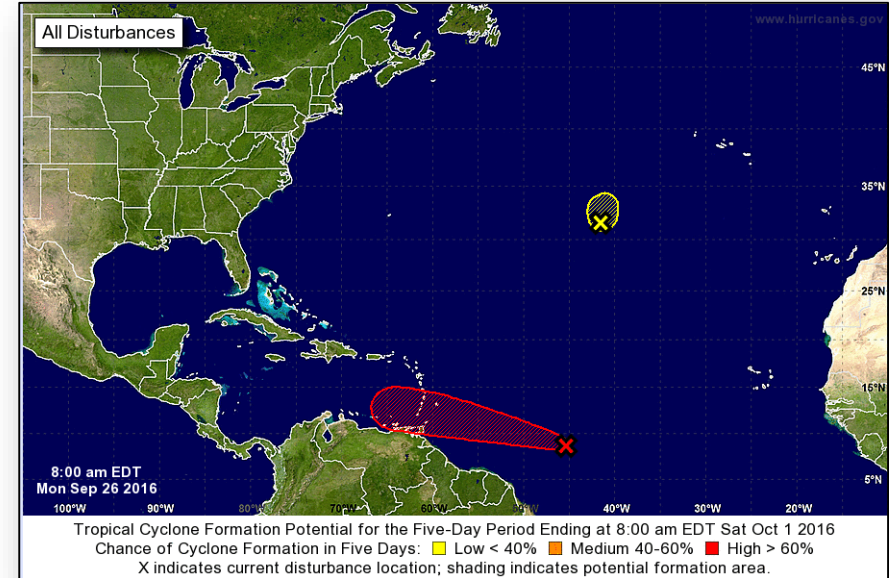


## Disturbance 1 (as of 8:00 a.m. EDT)

- Located 1,100 miles ESE of Windward Islands
- Moving W to WNW at 15-20 mph
- Conditions expected to be conducive for development
- Tropical depression likely to form mid-week
- Formation chance through 48 hours: Medium (60%)
- Formation chance through 5 days: High (90%)

## Disturbance 2 (as of 8:00 a.m. EDT)

- Remnants of Lisa
- Unfavorable conditions for regeneration into a tropical cyclone
- Formation chance through 48 hours: Low (near 0%)
- Formation chance through 5 days: Low (near 0%)

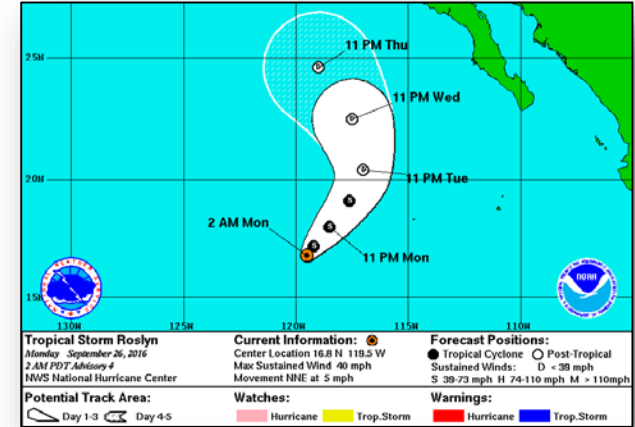


# Tropical Outlook - Eastern Pacific



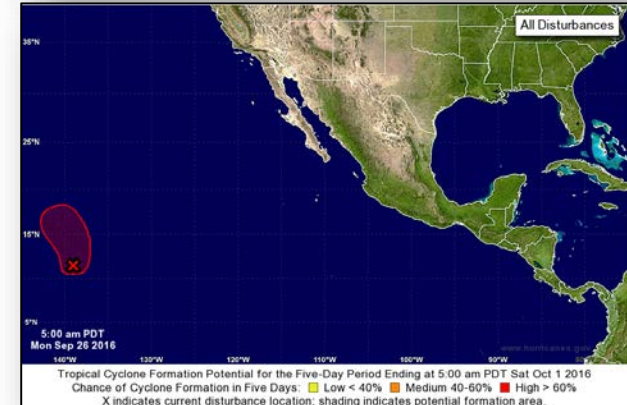
## Tropical Storm Roslyn: (Advisory #4 as of 5:00 a.m. EDT)

- Located 750 miles WSW of southern tip of Baja California Peninsula
- Moving NNE at 5 mph
- Maximum sustained winds 40 mph
- No coastal watches or warnings in effect



## Disturbance 1 (as of 8:00 a.m. EDT)

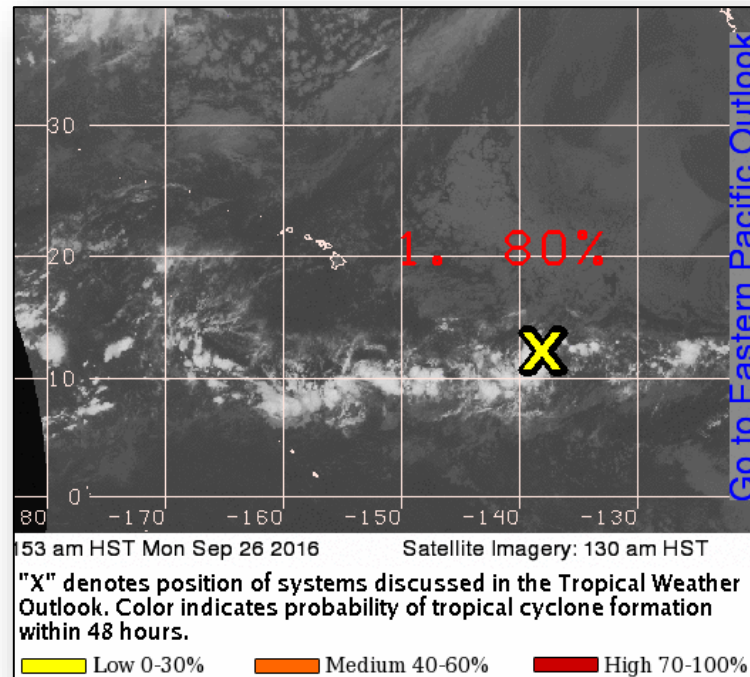
- Located 1,200 miles ESE of Big Island of Hawaii
- Moving very little next day or so, then will turn north later in the week
- Conditions conducive for tropical depression to form later today
- Formation chance through 48 hours: High (70%)
- Formation chance through 5 days: High (80%)



# Tropical Outlook - Central Pacific



- Disturbance 1 (Eastern Pacific) could enter the Central Pacific in the next day or so
- Elsewhere, no other tropical cyclones expected through Wednesday morning





# Joint Preliminary Damage Assessments



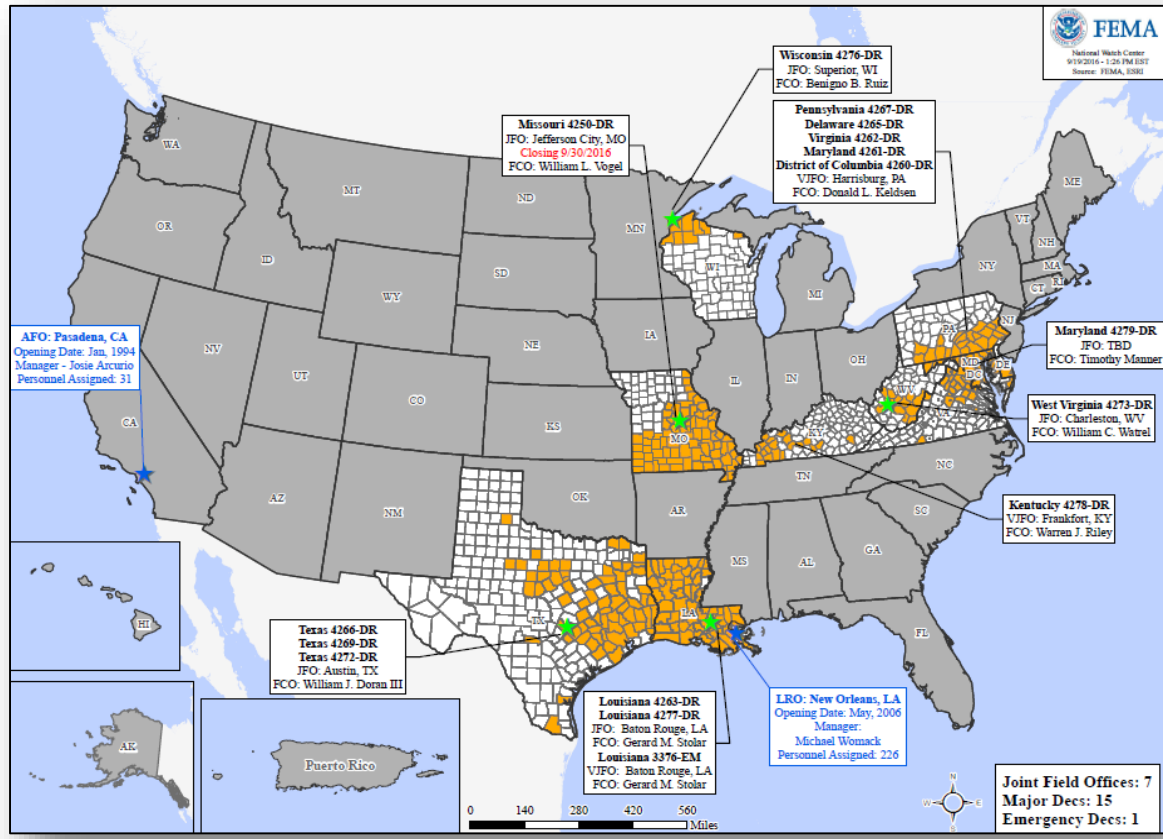
Region	State / Location	Event	IA/PA	Number of Counties		Start – End
				Requested	Complete	
IV	Florida	Severe Storms and Flooding (TS Hermine) August 30, 2016 – Ongoing	IA	12	12	9/6 – 9/15
			PA	33	25 (+2)	9/7 – TBD
IX	Hawaii	Flash Flooding and Mudslides Week of September 11, 2016	PA	1	0	9/20 – TBD

# Disaster Requests & Declarations



<b>Declaration Requests in Process</b>		<b>Requests APPROVED (since last report)</b>	<b>Requests DENIED (since last report)</b>
<b>4</b>	<b>Date Requested</b>	<b>0</b>	<b>0</b>
<b>KS – DR (Appeal) Severe Storms, Tornadoes, Straight-line Winds, and Flooding</b>	<b>August 31, 2016</b>		
<b>IA – DR Severe Storms, Straight-line Winds, and Flooding</b>	<b>September 19, 2016</b>		
<b>FL – DR Hurricane Hermine</b>	<b>September 20, 2016</b>		
<b>Navajo Nation – DR Severe Storms and Flooding</b>	<b>September 21, 2016</b>		

# Open Field Offices as of September 26



# Readiness – Deployable Teams and Assets



Resource	Status	Total	FMC Available		Partially Available	Not Available	Detailed, Deployed, Activated	Comments	Rating Criterion
FCO		35	6	17%	0	0	29		OFDC Readiness: FCO    Green    Yellow    Red Type 1   3+        2        1 Type 2   4+        3        2 Type 3   4+        3        2 FDRC     3        2        1
FDRC		10	1	10%	0	3	6		
US&R		28	27	96%	1	0	0	NJ-TF1: Partially Mission Capable	<ul style="list-style-type: none"> <li>• Green = Available / FMC</li> <li>• Yellow = Available / PMC</li> <li>• Red = Out-of-Service</li> <li>• Blue = Assigned / Deployed</li> </ul>
National IMAT		3	2	67%	0	0	1	East 2 to LA (DR-4277)	<ul style="list-style-type: none"> <li>• Green: 3 available</li> <li>• Yellow: 1-2 available</li> <li>• Red: 0 avail (<i>Individual N-IMAT red if 50% of Section Chiefs and / or Team Leader is unavailable for deployment.</i>)</li> </ul>
Regional IMAT		13	9	69%	0	0	4	<u>Deployed:</u> Region II to LA (DR-4277) Region VI Team 2 to LA (DR-4277) Region VIII to LA (DR-4277) Region X to LA (DR-4277)	<ul style="list-style-type: none"> <li>• Green: &gt;6 teams available</li> <li>• Yellow: 4 - 6 teams available</li> <li>• Red: &lt; 4 teams available</li> </ul> R-IMAT also red if TL Ops / Log Chief is unavailable & has no qualified replacement
MERS		18	17	94%	0	0	1	<u>Assets are supporting:</u> PR (Zika UCG)	<ul style="list-style-type: none"> <li>• Green = &gt;66% available</li> <li>• Yellow = 33% to 66% available</li> <li>• Red = &lt;33% available</li> </ul>

# Readiness – National and Regional Teams



Resource	Status	Total	FMC Available		Partially Available	Not Available	Status	Comments	Rating Criteria
NWC		5	5		0	0	Not Activated		<ul style="list-style-type: none"> <li>• Green = FMC</li> <li>• Yellow = PMC</li> <li>• Red = NMC</li> </ul>
NRCC		2	2	100%	0	0	Not Activated		
HLT		1	1	100%	0	0	Activated		
RRCCs		10	10	100%	0	0	Not Activated		
RWCs/MOCs		10	10	100%	0	0	Activated	Region VII at Enhanced Watch (day shift only) for Iowa flooding	



# FEMA

**FEMA's mission is to support our citizens and first responders to ensure that as a nation we work together to build, sustain, and improve our capability to prepare for, protect against, respond to, recover from, and mitigate all hazards.**