



FEMA

Daily Operations Briefing

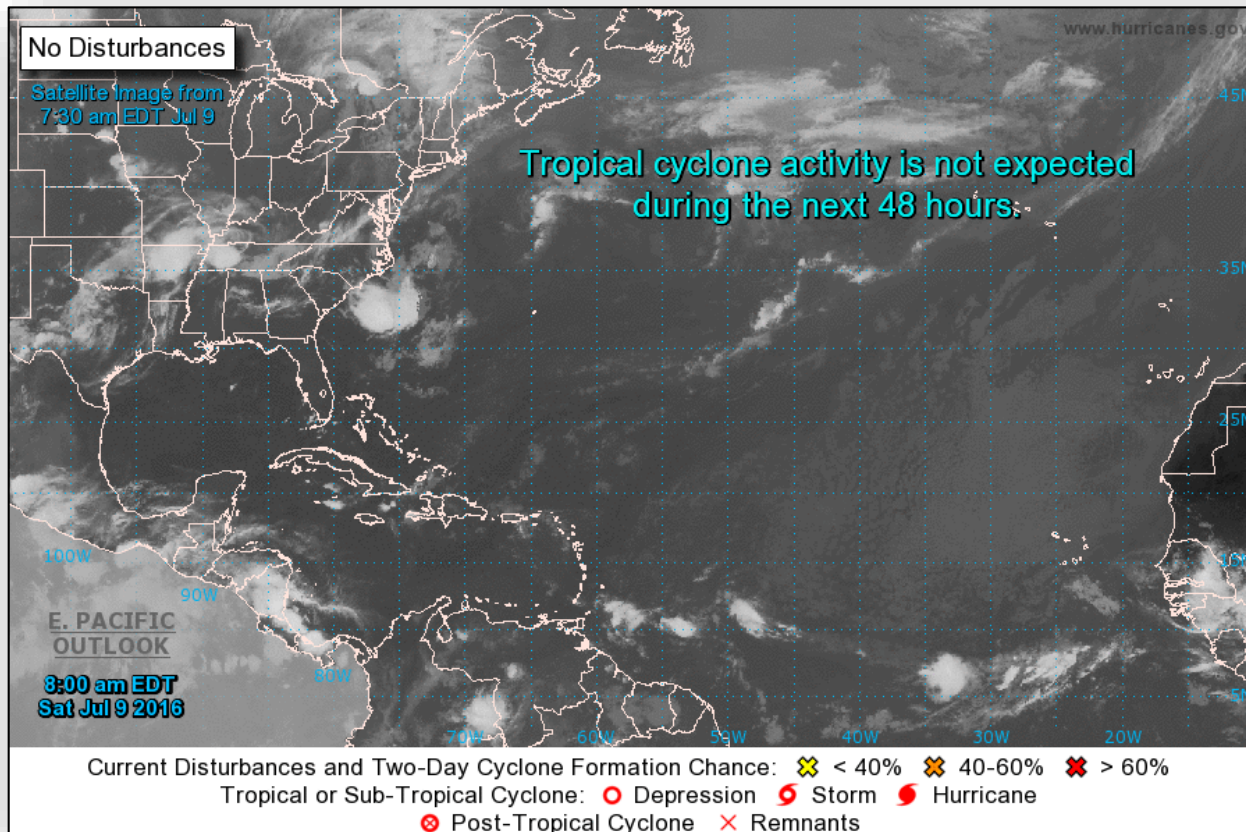
Saturday, July 9, 2016

8:30 a.m. EDT

Tropical Outlook - Atlantic



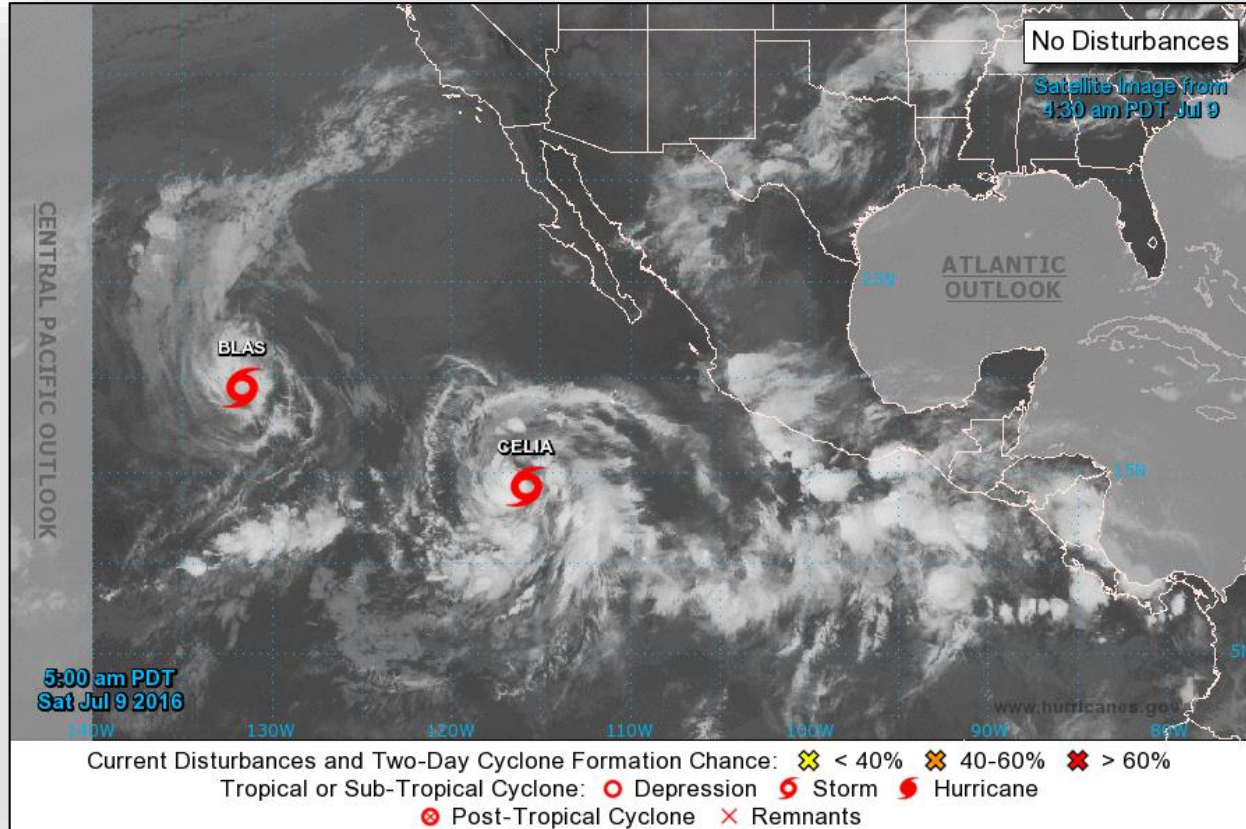
FEMA



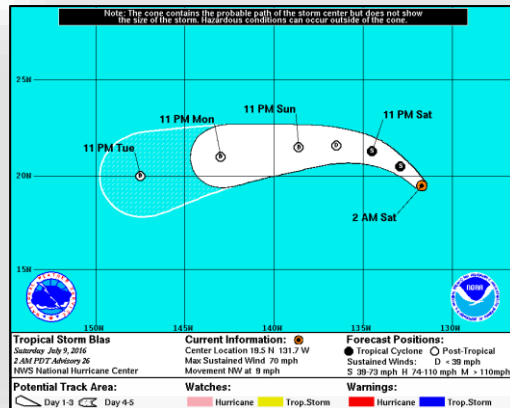
Tropical Outlook - Eastern Pacific



FEMA

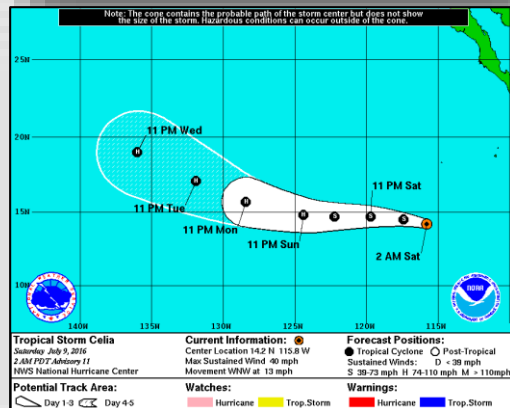


Tropical Outlook - Eastern Pacific



Tropical Storm Blas: (Advisory #26 as of 5:00 a.m. EDT)

- Located 1,520 miles E of Hilo, Hawaii; moving WNW at 9 mph
- Maximum sustained winds 70 mph; with higher gusts
- A turn to the WNW is forecast tonight followed by a turn W on Sunday
- Rapid weakening is forecast, expected to be a remnant low by Sunday
- Tropical-storm-force winds extend outward 105 miles
- No coastal watches or warnings in effect



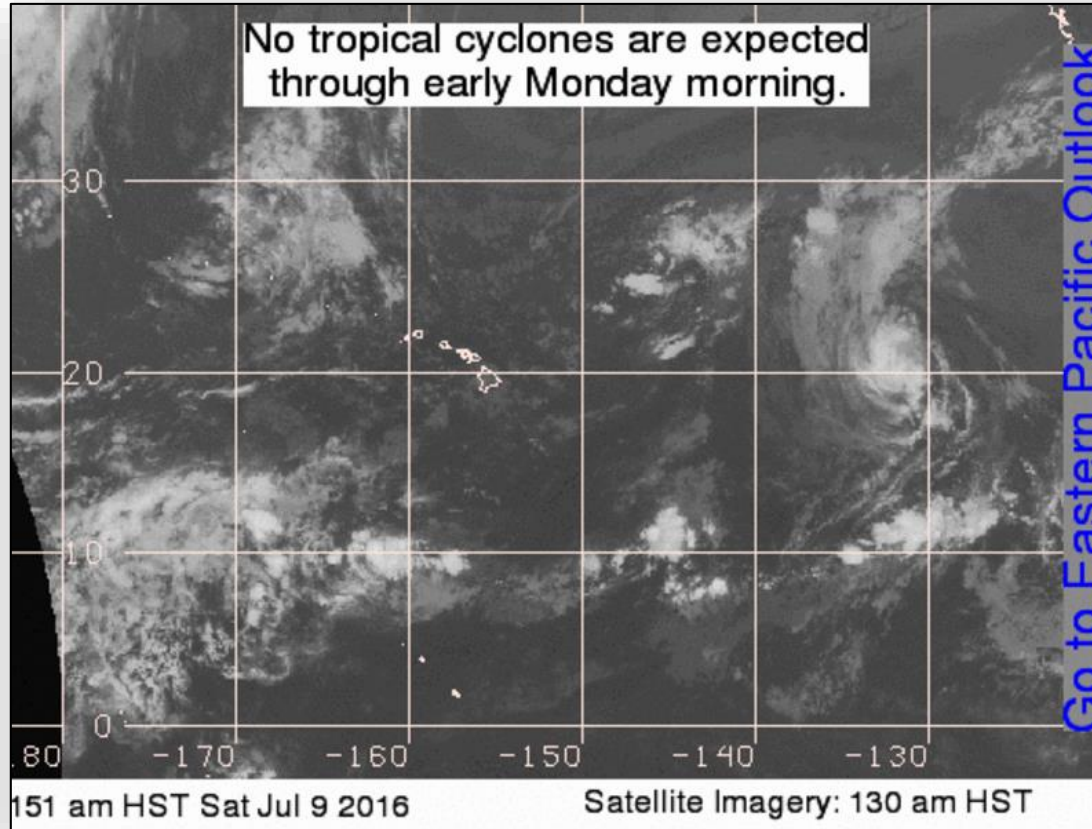
Tropical Storm Celia: (Advisory #11 as of 5:00 a.m. EDT)

- Located 715 miles SW of southern tip of Baja California Mexico
- Moving WNW near 13 mph; a turn toward the W forecast today
- Maximum sustained winds 40 mph; with higher gusts
- Strengthening forecast during next 48 hours; expected to become a hurricane on Sunday
- Tropical-storm-force winds extend outward up to 45 miles
- No coastal watches or warnings in effect

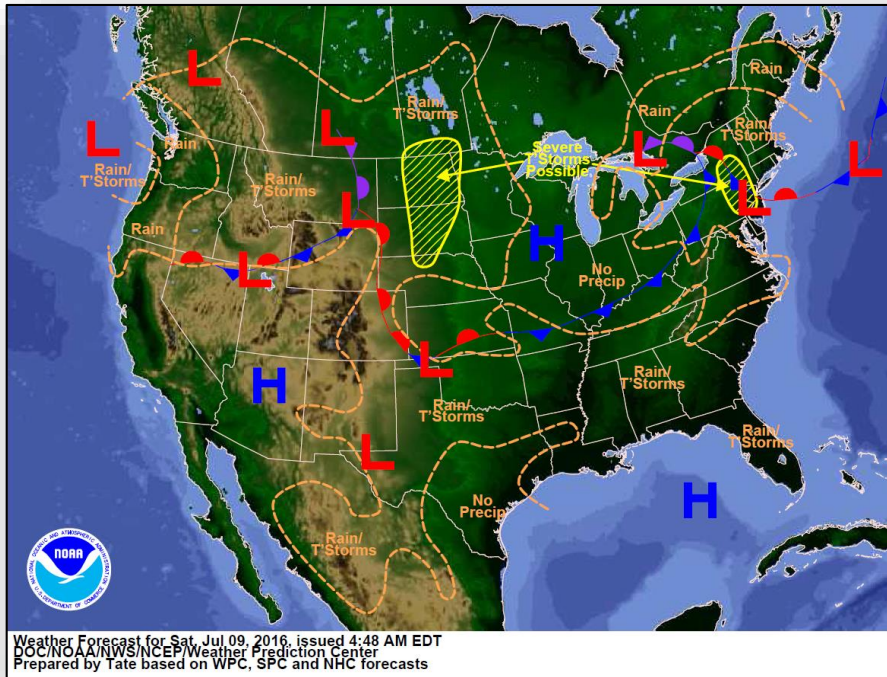
Tropical Outlook - Central Pacific



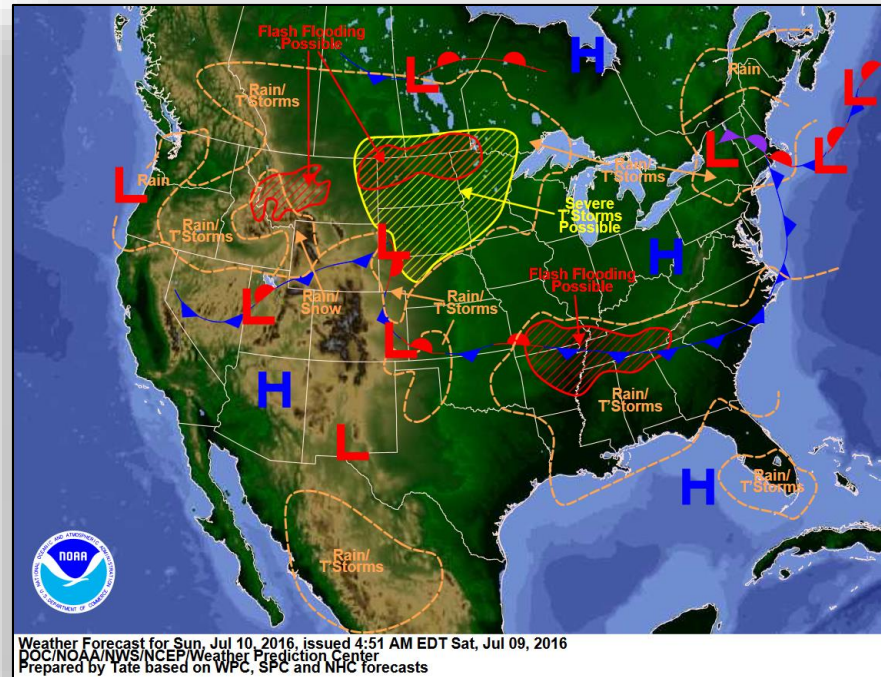
FEMA



National Weather Forecast

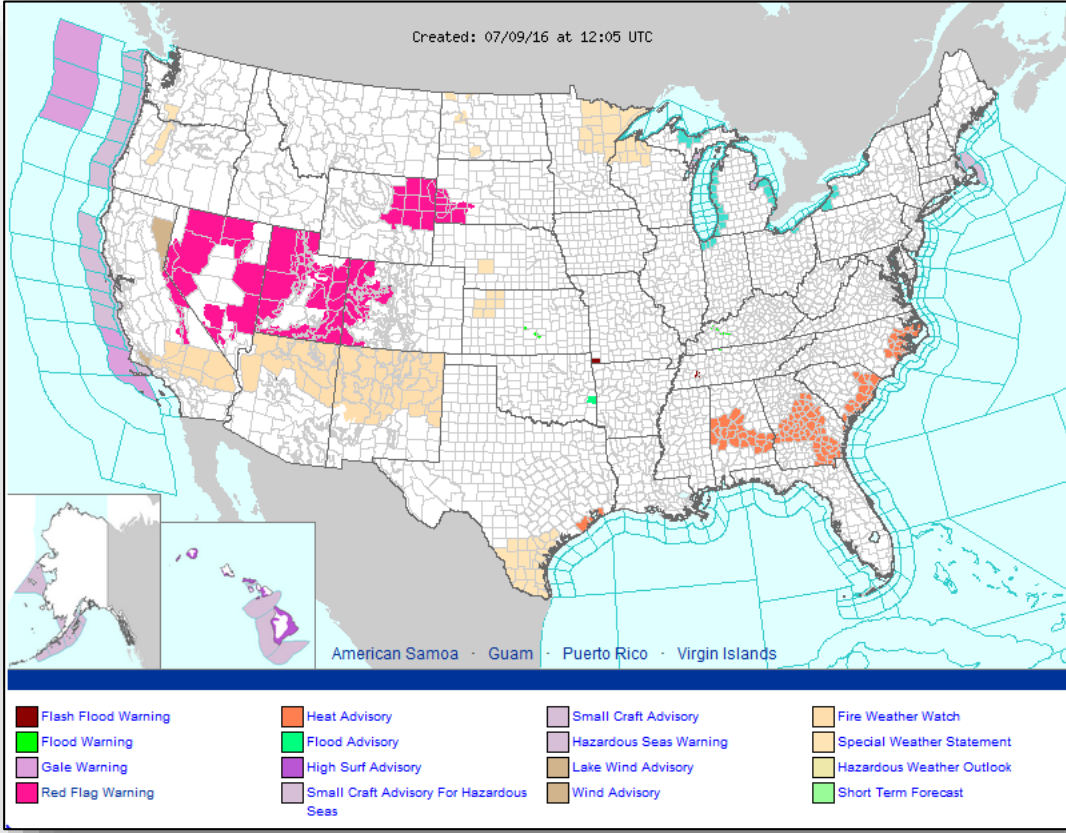


Today

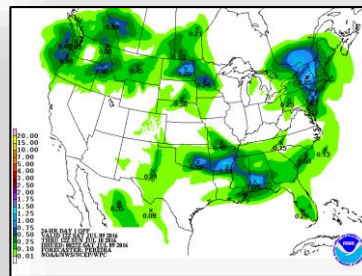
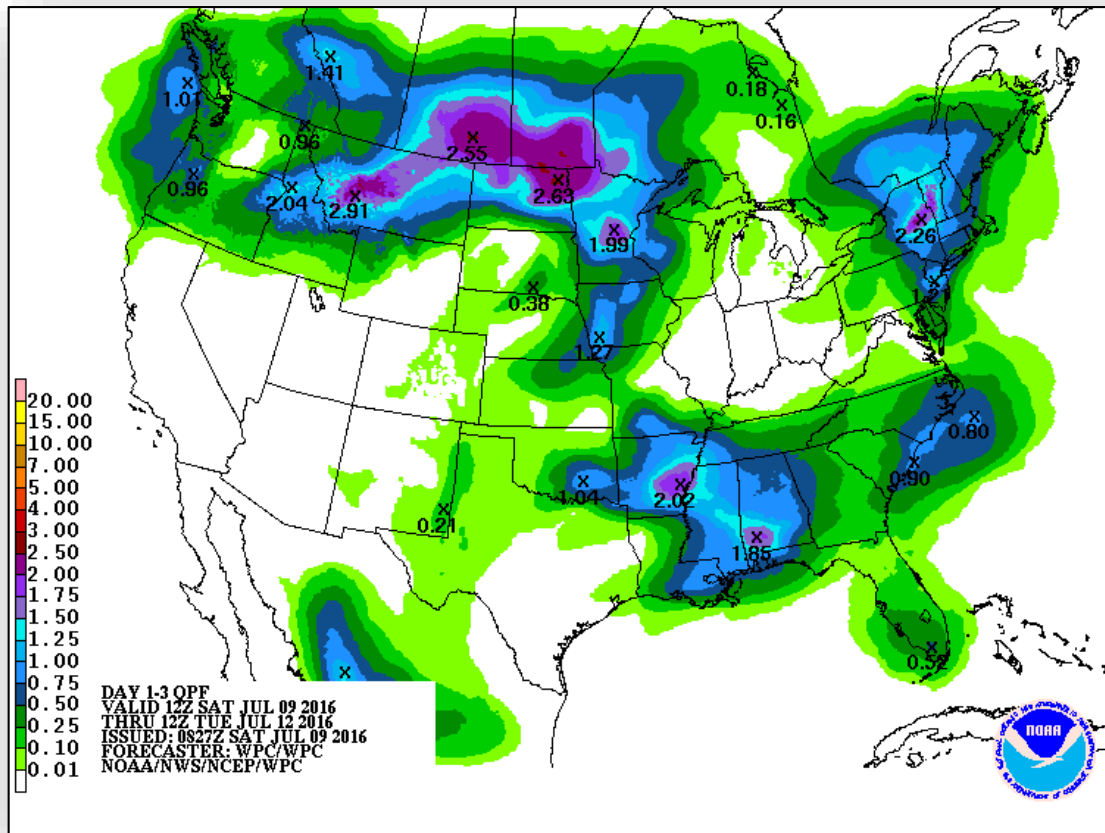


Tomorrow

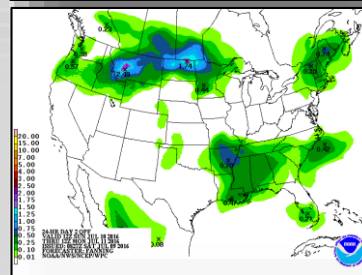
Active Watches & Warnings



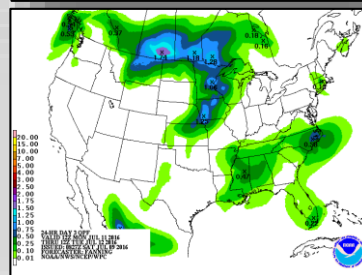
Precipitation Forecast – Days 1-3



Day 1

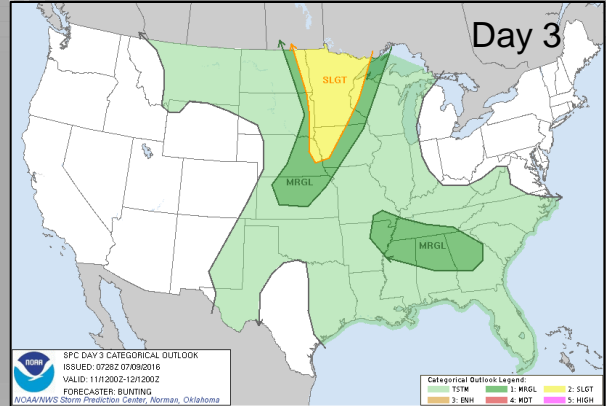
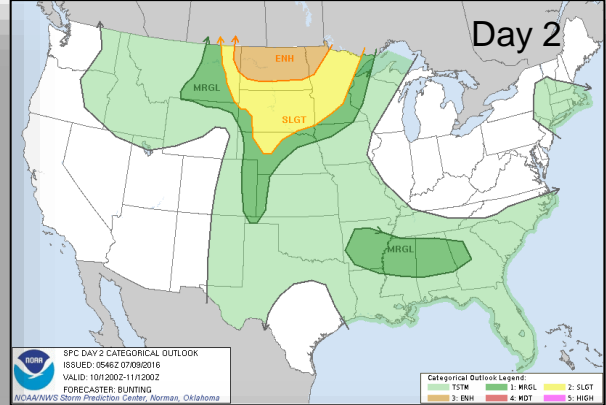
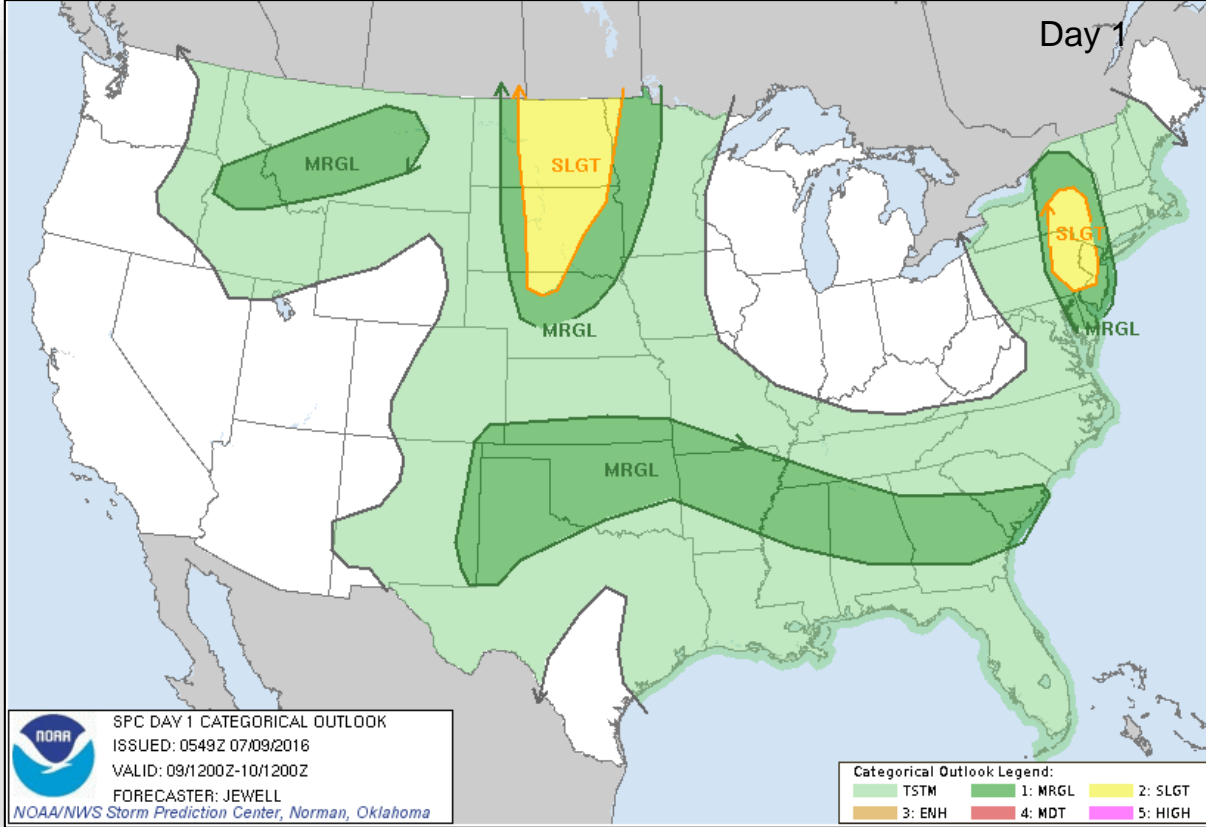


Day 2

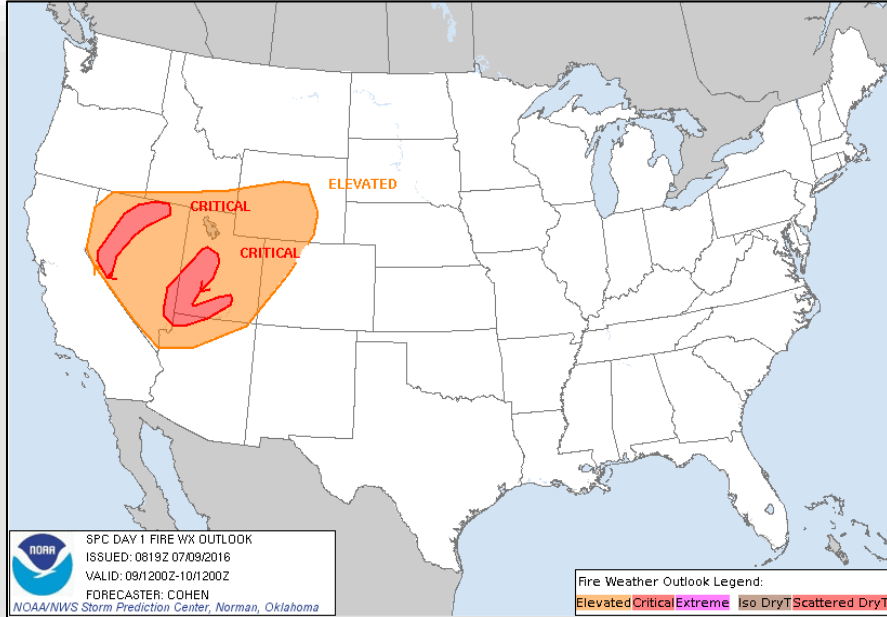


Day 3

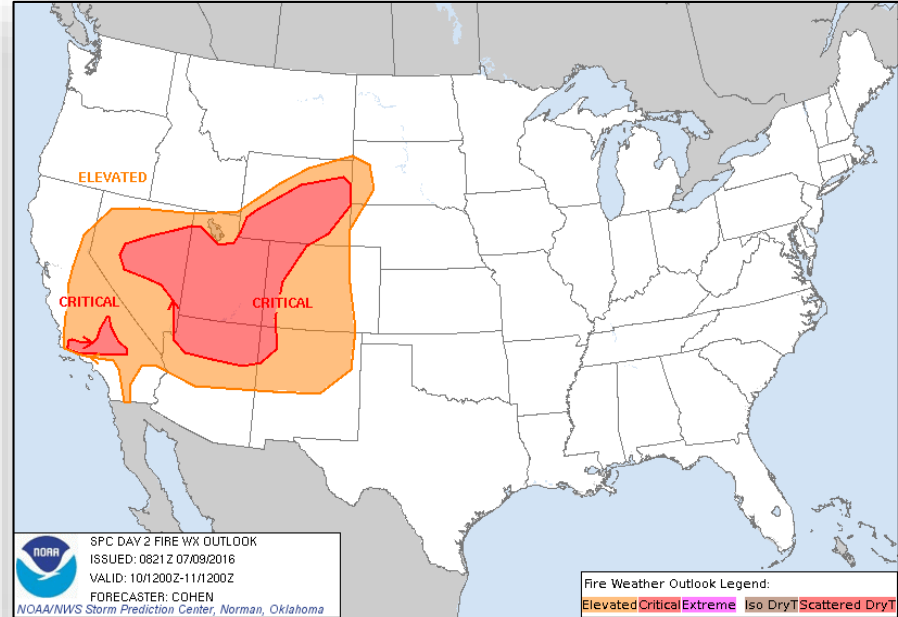
Severe Weather Outlook - Days 1 - 3



Fire Weather Outlook



Day 1

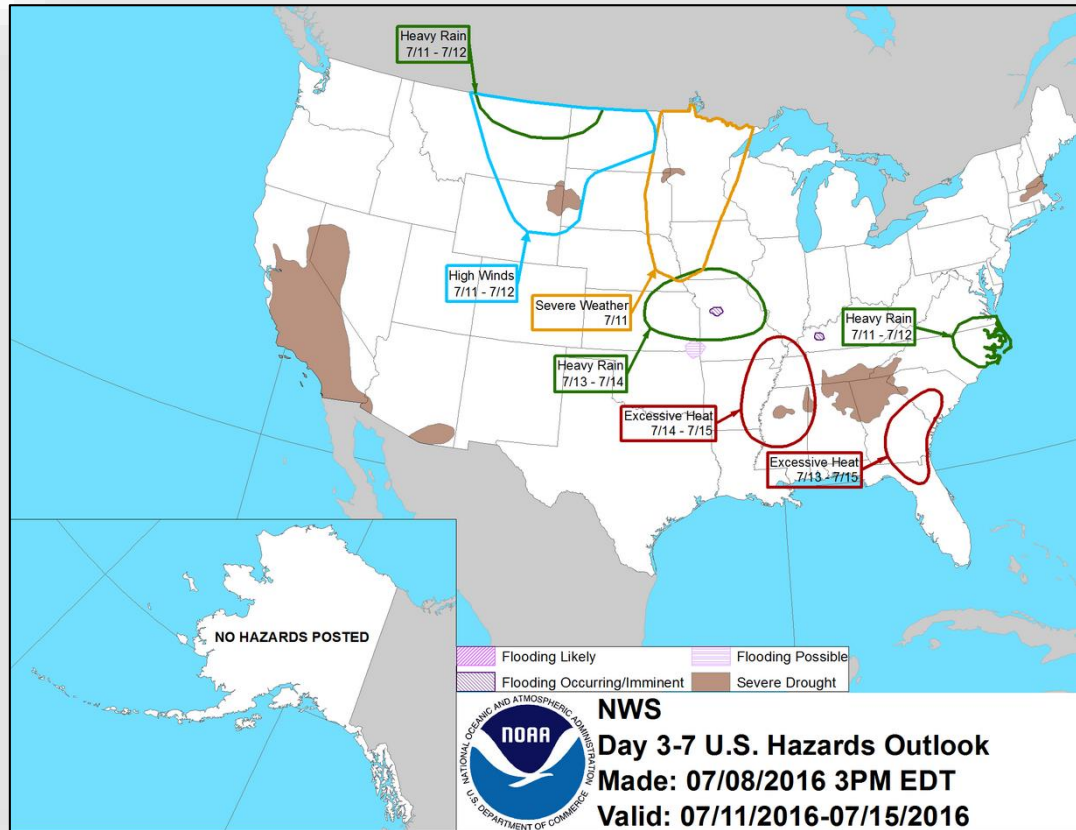


Day 2

Hazards Outlook - July 11-15

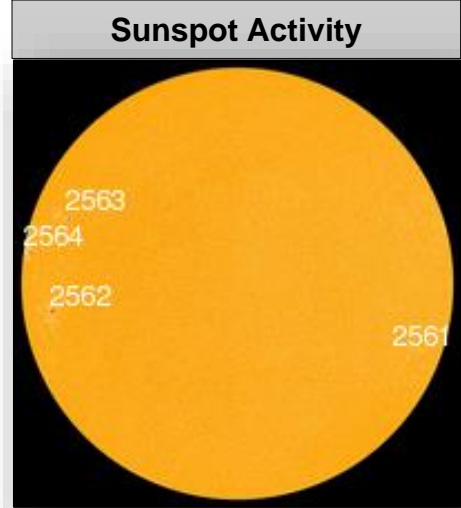
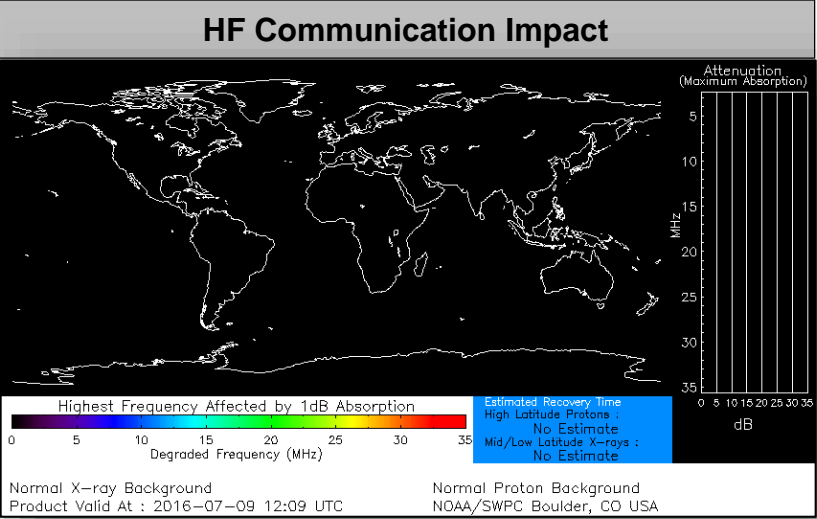


FEMA



Space Weather

	Past 24 Hours	Current	Next 24 Hours
Space Weather Activity	Minor	None	Minor
Geomagnetic Storms	G1	None	G1
Solar Radiation Storms	None	None	None
Radio Blackouts	None	None	None



Joint Preliminary Damage Assessments



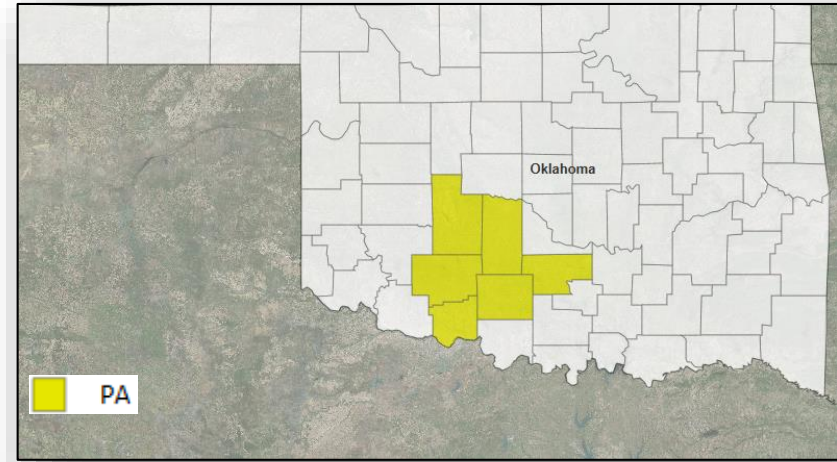
Region	State / Location	Event	IA/PA	Number of Counties		Start – End
				Requested	Complete	
VII	KS	Severe Storms and Flooding May 22 - 31, 2016	PA	31	23	6/20 – TBD
IX	CA	Erskine Fire June 23, 2016 and continuing	IA	1	0	7/7 – TBD

Major Disaster Declaration Request – OK



July 8, 2016

- The Governor requested a Major Disaster Declaration for State of Oklahoma as a result of severe storms, tornadoes, straight-line winds and flooding beginning on June 11, 2016, and continuing
- Requesting:
 - Public assistance for 6 counties
 - Hazard Mitigation statewide



Disaster Requests & Declarations



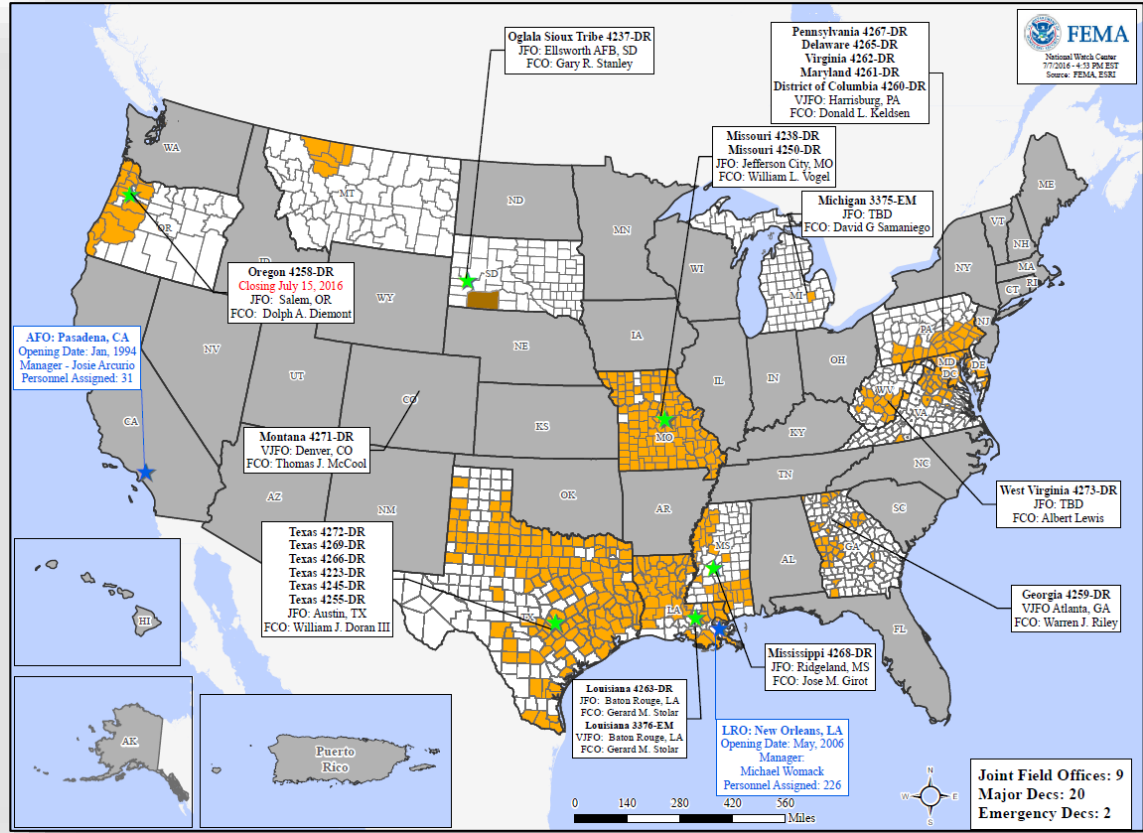
Declaration Requests in Process		Requests APPROVED (since last report)	Requests DENIED (since last report)
2	Date Requested	0	0
OK – DR Severe storms, tornadoes, straight-line winds & flooding	July 8, 2016		
FL – EM Toxic Algae Blooms	July 6, 2016		

Disaster Amendments



Amendment	Effective Date	Action
Amendment No. 4 to FEMA-4272-DR-TX	July 8, 2016	Adds 10 counties for PA Adds 5 counties for PA (Categories A and C-G)

Open Field Offices as of July 9, 2016



FEMA Readiness - Deployable Teams & Assets



Deployable Teams & Assets									
Resource	Status	Total	FMC Available		Partially Available	Not Available	Detailed, Deployed, Activated	Comments	Rating Criterion
FCO		36	14	39%	0	3	19		OFDC Readiness: FCO Green Yellow Red Type 1 3+ 2 1 Type 2 4+ 3 2 Type 3 4 3 2 FDRC 3 2 1
FDRC		10	3	30%	0	1	6		
US&R		28	27	96%	1	0	0	NJ TF-1 Partially Mission Capable	<ul style="list-style-type: none"> Green = Available/FMC Yellow = Available/PMC Red = Out-of-Service Blue = Assigned/Deployed
National IMAT		3	3	100%	0	0	0	West: Primary (On Call)	<ul style="list-style-type: none"> Green: 3 available Yellow: 1-2 available Red: 0 avail (<i>Individual N-IMAT red if 50% of Section Chiefs and/or Team Leader is unavailable for deployment.</i>)
Regional IMAT		13	8	62%	0	0	5	<u>Deployed:</u> RI: To WV (4273-WV) RI: To WV (4273-WV) RIV: Team 1 to WV (4273-WV) RVI: Team 1 to TX (4266-TX) RVII: To TX (4272-TX)	<ul style="list-style-type: none"> Green: >6 teams available Yellow: 4 - 6 teams available Red: < 4 teams available R-IMAT also red if TL Ops/Log Chief is unavailable & has no qualified replacement
MERS Teams		18	12	67%	0	0	6	<u>Deployed:</u> Denton: 2 teams to TX (4272-TX) Frederick: 1 team to WV (4273-WV) Thomasville: 1 team to WV (4273-WV) Denver: 1 team to OH (RNC 2016) Denver: 1 team to WA (Readiness Exercise)	<ul style="list-style-type: none"> Green = >66% available Yellow = 33% to 66% available Red = <33% available

FEMA Readiness - National & Regional Teams



National/Regional Teams									
Resource	Status	Total	FMC Available		Partially Available	Not Available	Status	Comments	Rating Criterion
NWC	Green	5	5	100%	0	0	Watch / Steady State		<ul style="list-style-type: none"> • Green = FMC • Yellow = PMC • Red = NMC
NRCC	Green	2	2	100%	0	0	Not Activated		
HLT	Green	1	1	100%	0	0	Activated		
DEST	Green						Not Activated		
RRCCs	Green	10	10	100%	0	0	Not Activated		
RWCs/MOCs	Green	10	10	100%	0	0	Not Activated		



FEMA

FEMA's mission is to support our citizens and first responders to ensure that as a nation we work together to build, sustain, and improve our capability to prepare for, protect against, respond to, recover from, and mitigate all hazards.