



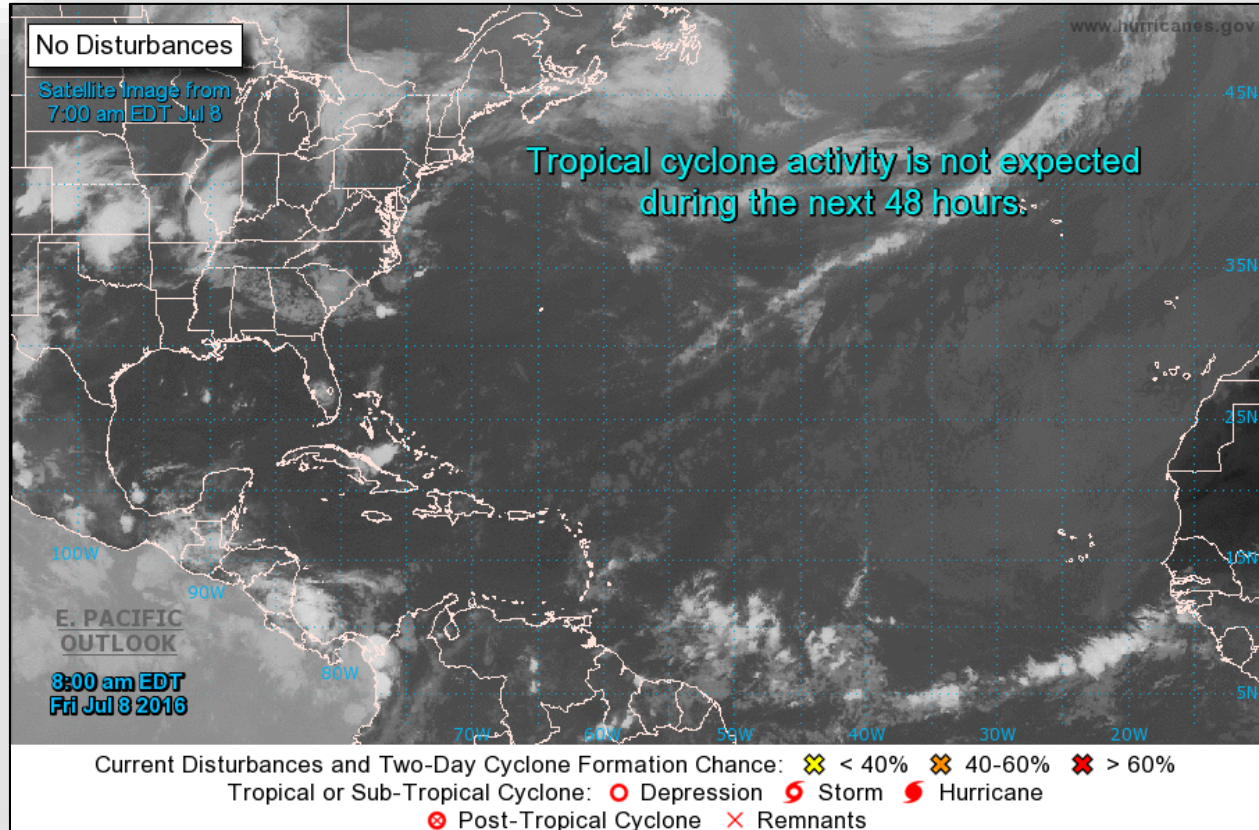
FEMA

Daily Operations Briefing

Friday, July 8, 2016

8:30 a.m. EDT

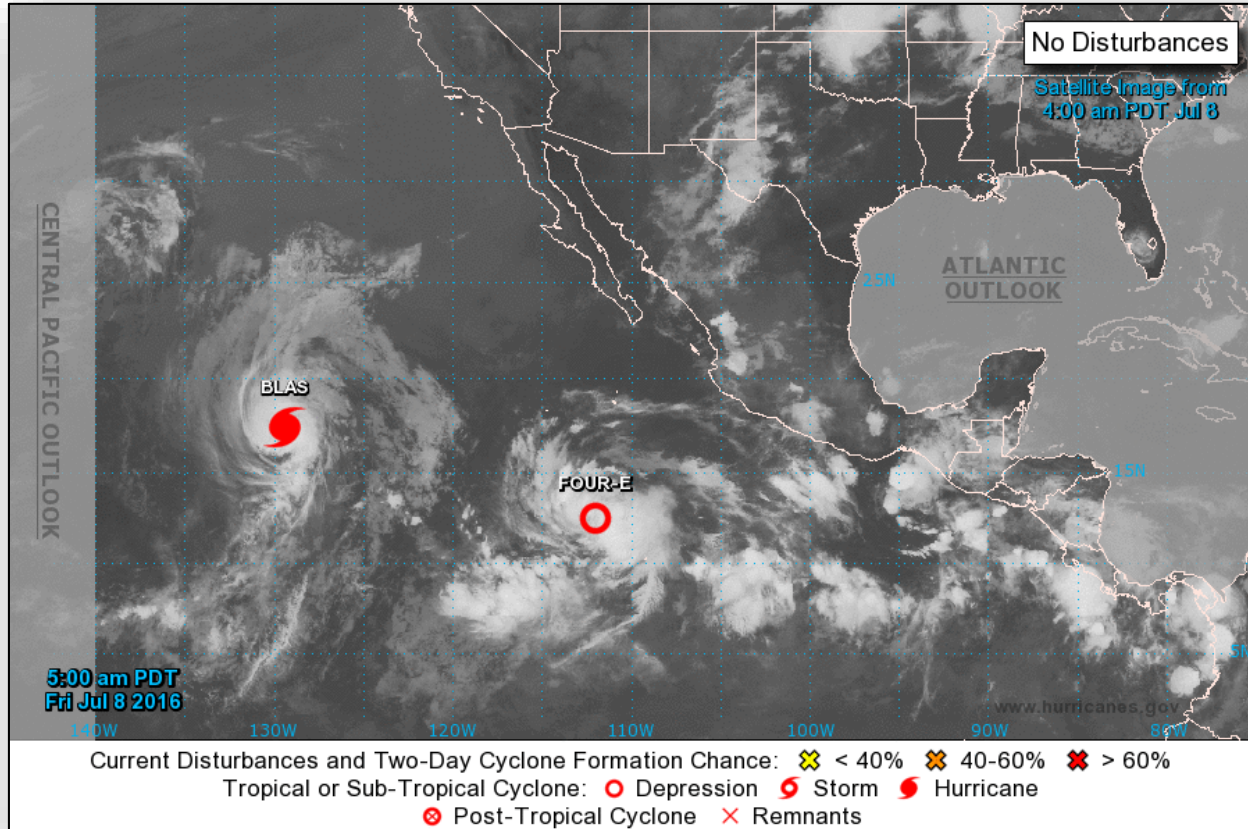
Tropical Outlook - Atlantic



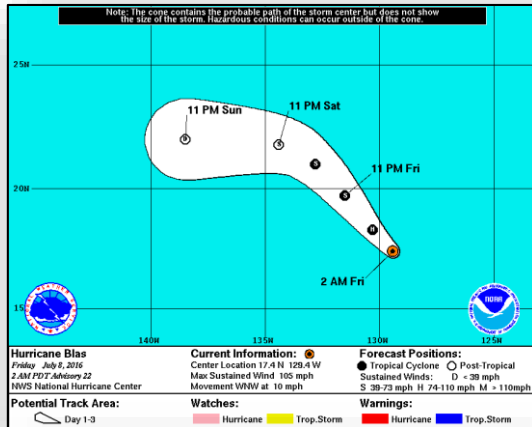
Tropical Outlook - Eastern Pacific



FEMA

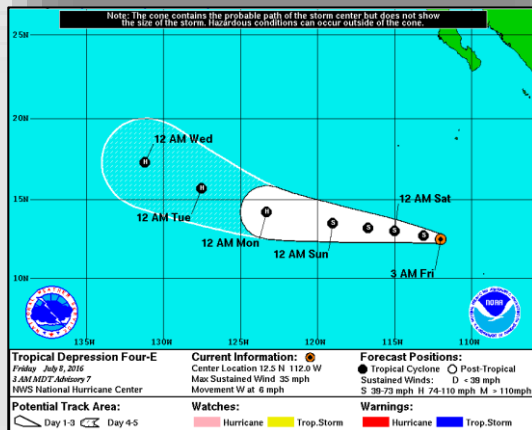


Tropical Outlook - Eastern Pacific



Hurricane Blas: (Advisory #22 as of 5:00 a.m. EDT)

- Located 1,320 miles WSW of southern tip of Baja California Mexico
- Moving WNW at 10 mph
- Maximum sustained winds 105 mph (Category 2 hurricane)
- Rapid weakening forecast next 48 hours
- Hurricane force winds extend 35 miles
- Tropical storm force winds extend 125 miles
- No coastal watches or warnings in effect



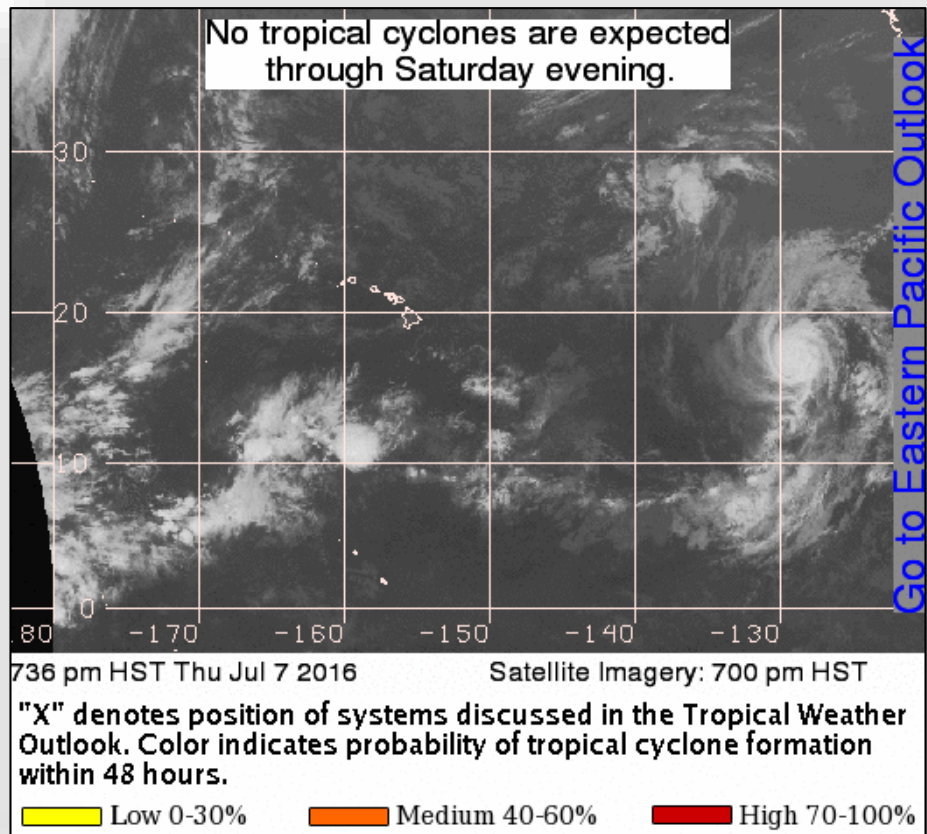
Tropical Depression Four-E: (Advisory #7 as of 5:00 a.m. EDT)

- Located 730 miles S of southern tip of Baja California Mexico
- Moving W at 6 mph
- This motion expected to continue next 48 hours
- Maximum sustained winds 35 mph
- Forecast to become a tropical storm later today
- No coastal watches or warnings in effect

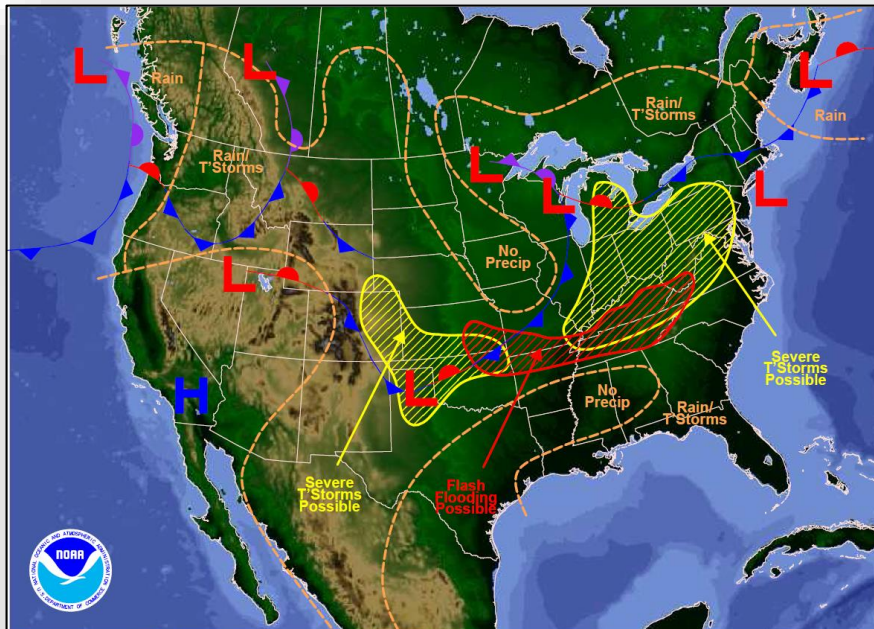
Tropical Outlook - Central Pacific



FEMA

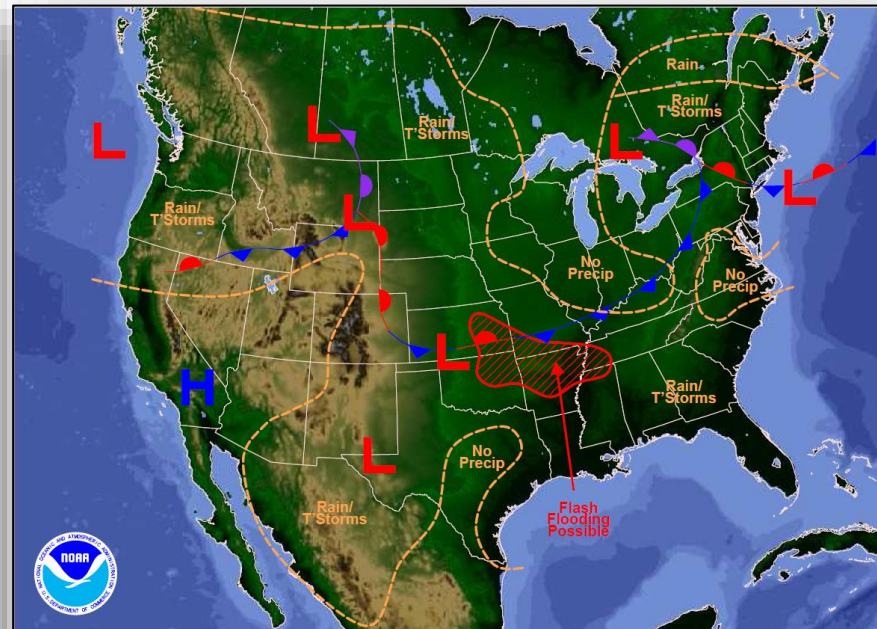


National Weather Forecast



Weather Forecast for Fri, Jul 08, 2016, issued 4:37 AM EDT
DOC/NOAA/NWS/NCEP/Weather Prediction Center
Prepared by McCreynolds based on WPC, SPC and NHC forecasts

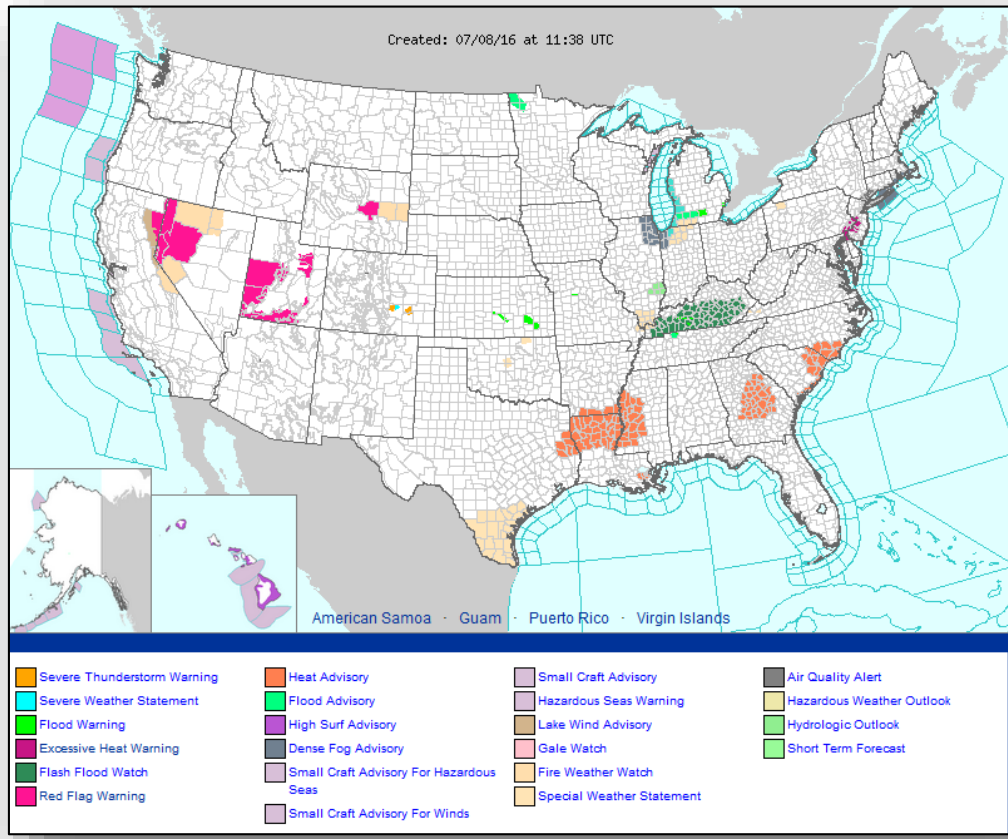
Today



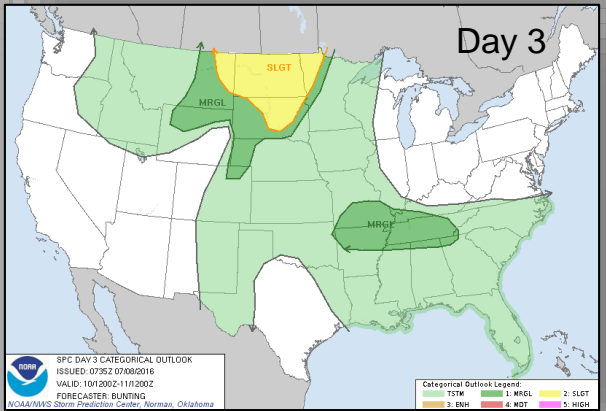
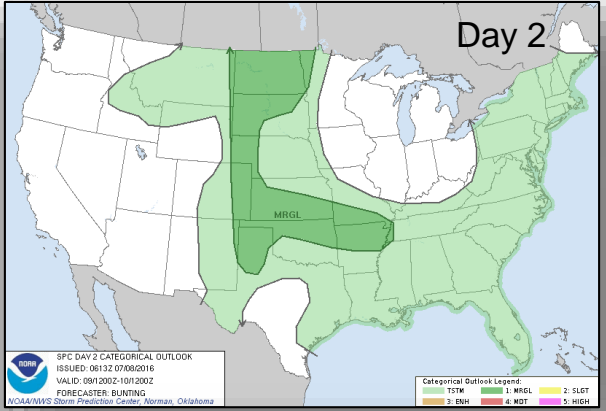
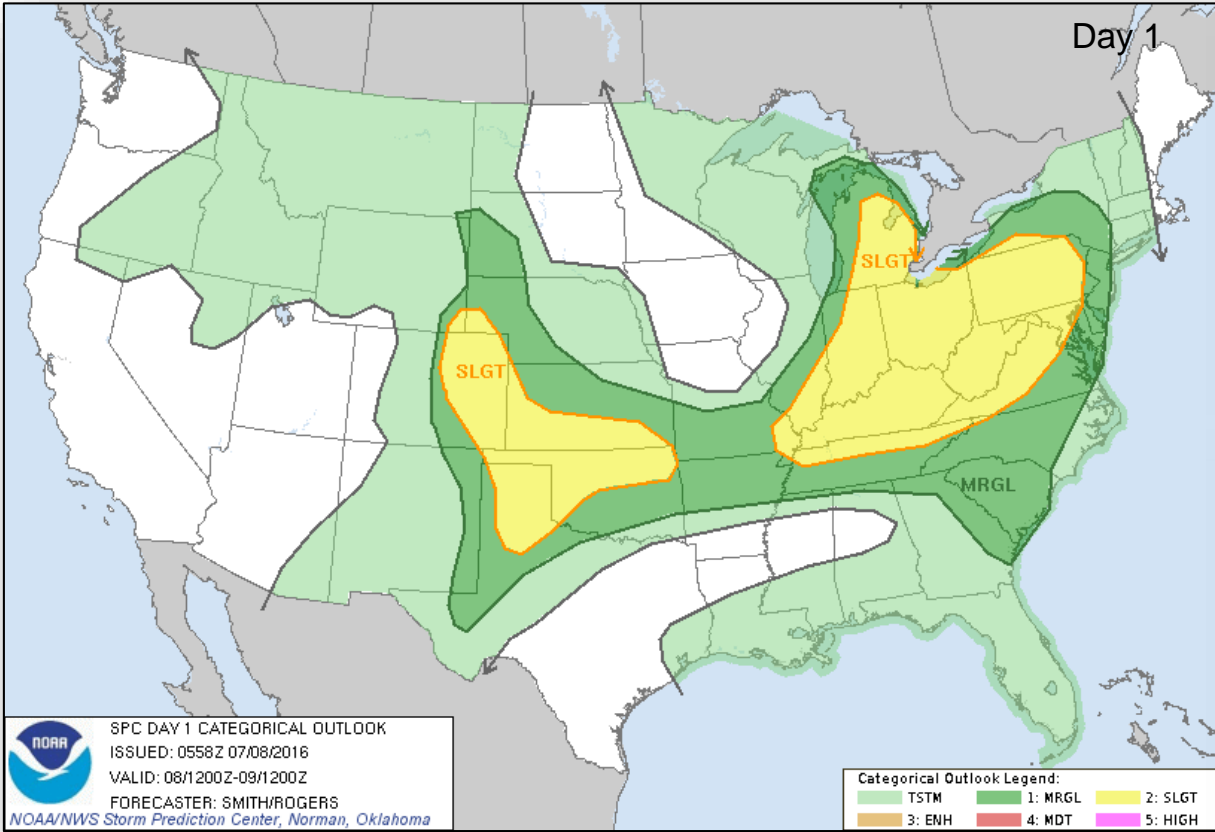
Weather Forecast for Sat, Jul 09, 2016, issued 4:41 AM EDT Fri, Jul 08, 2016
DOC/NOAA/NWS/NCEP/Weather Prediction Center
Prepared by McCreynolds based on WPC, SPC and NHC forecasts

Tomorrow

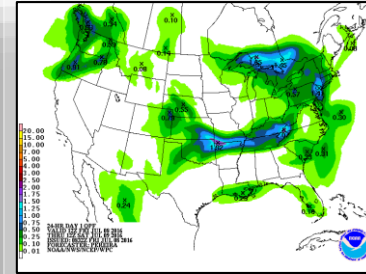
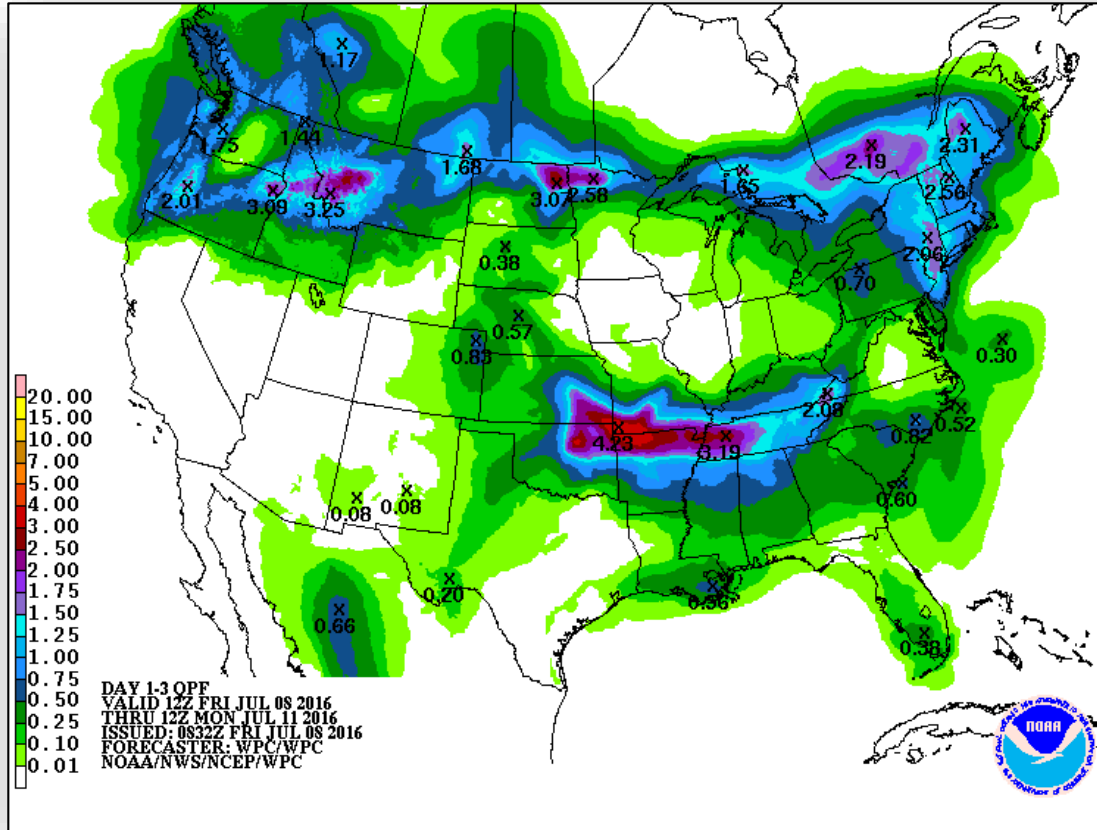
Active Watches & Warnings



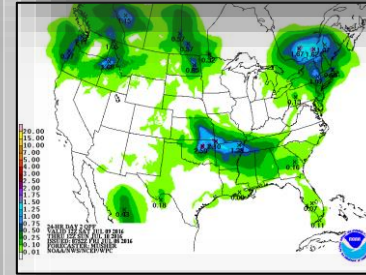
Severe Weather Outlook - Days 1 - 3



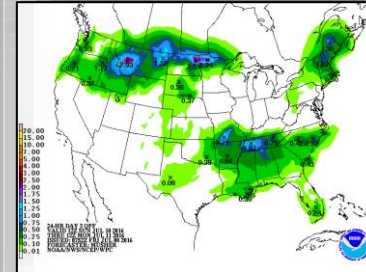
Precipitation Forecast – Days 1-3



Day 1

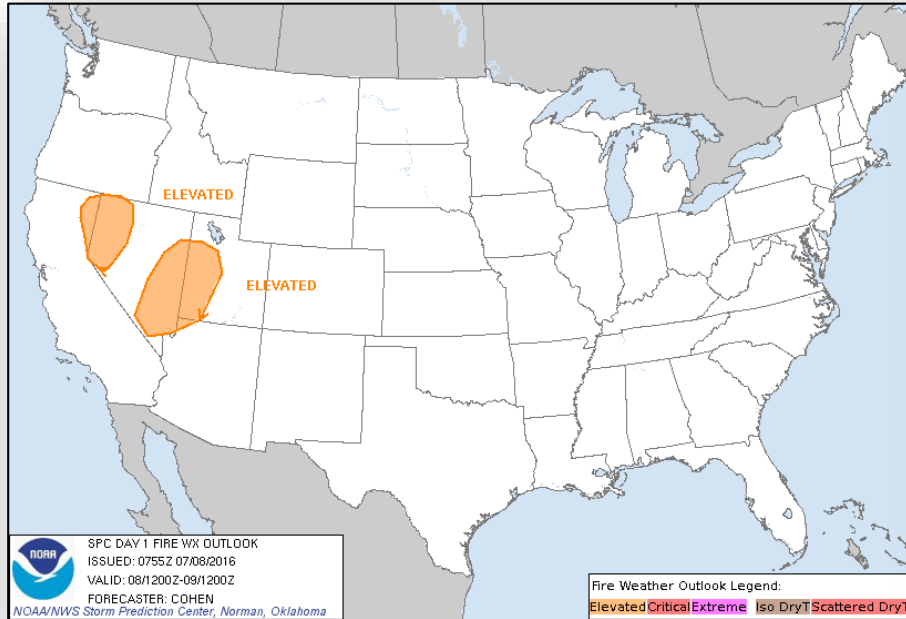


Day 2

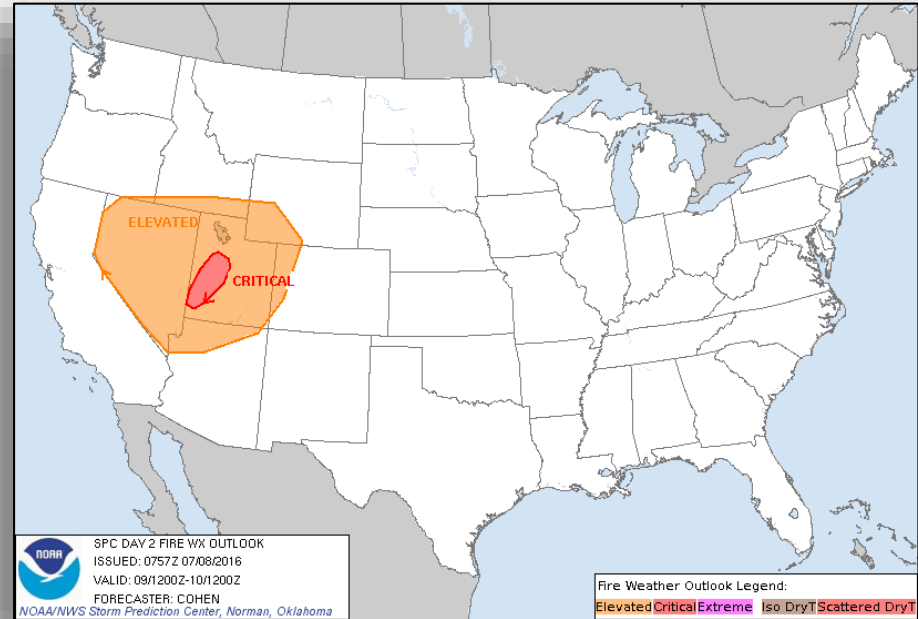


Day 3

Fire Weather Outlook



Day 1

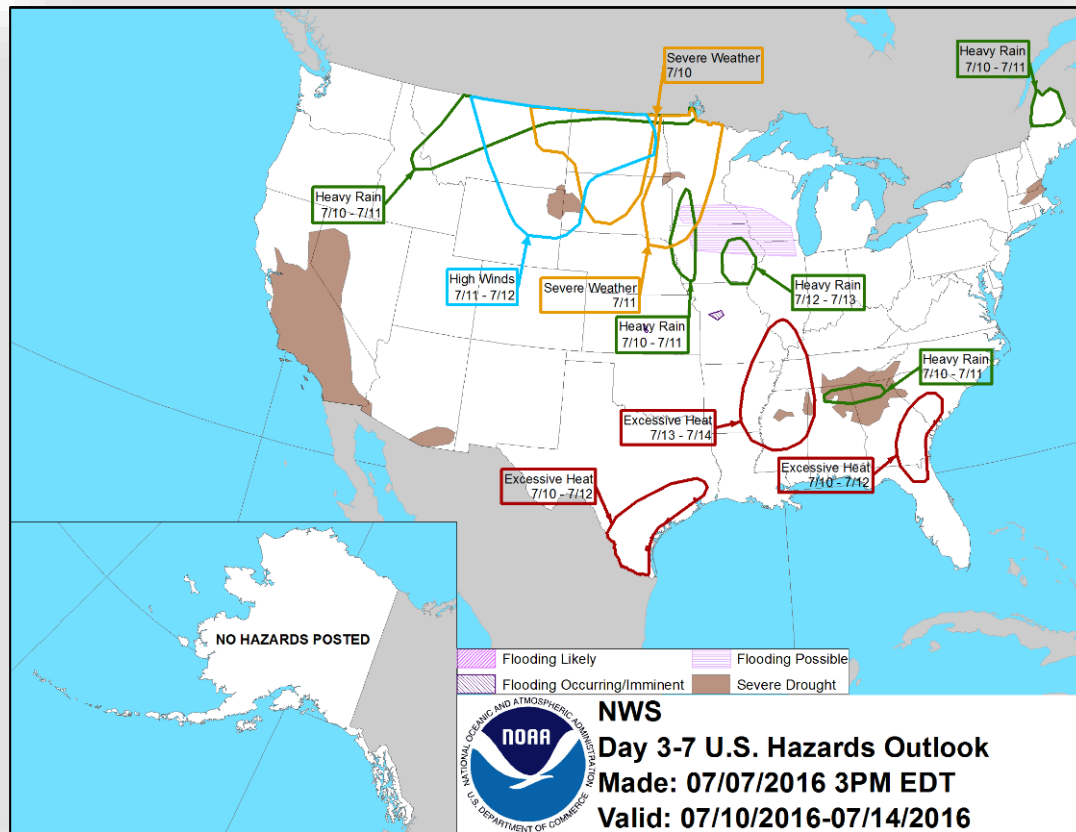


Day 2

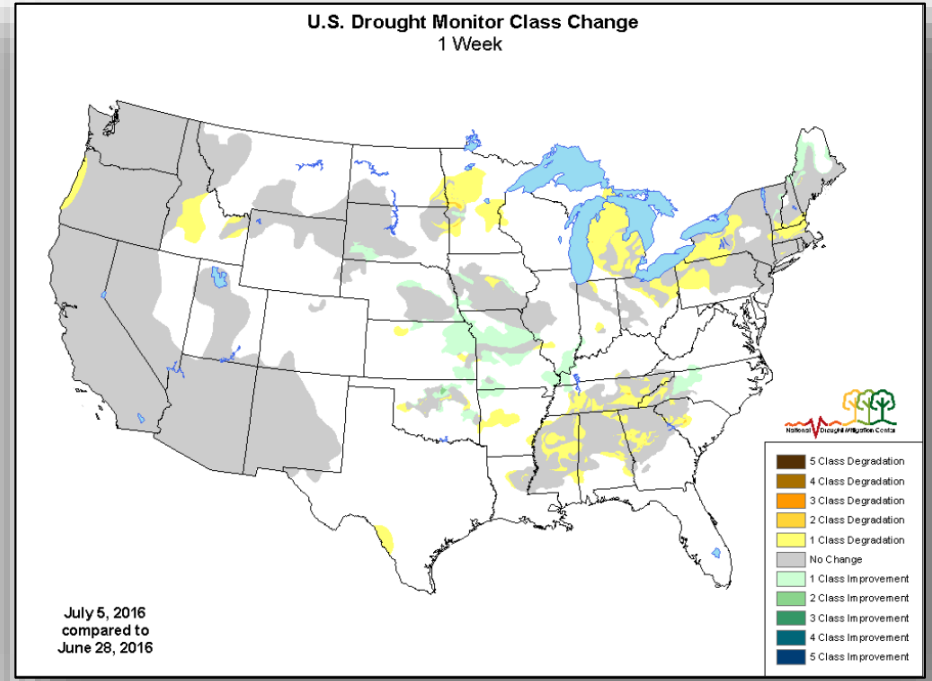
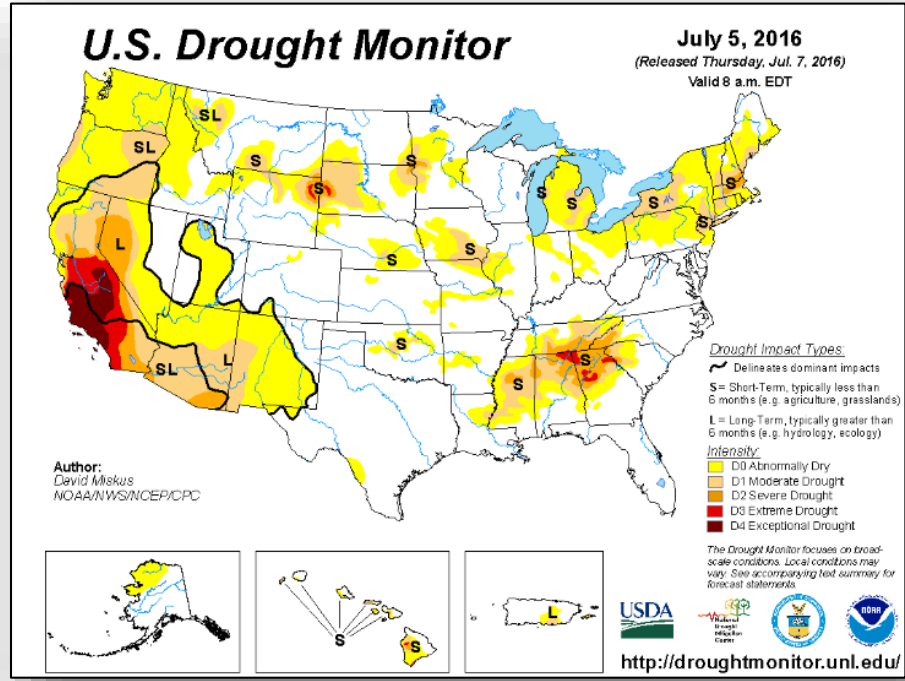
Hazards Outlook - July 10-14



FEMA

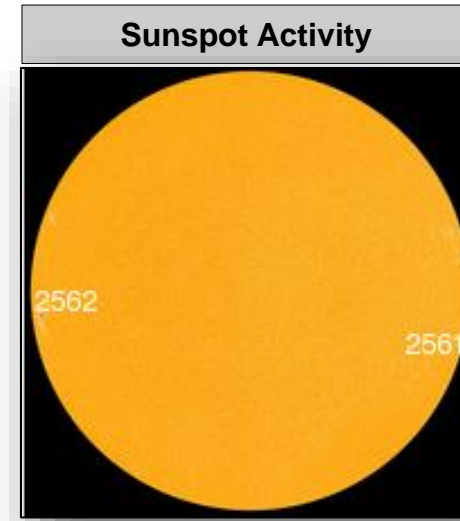
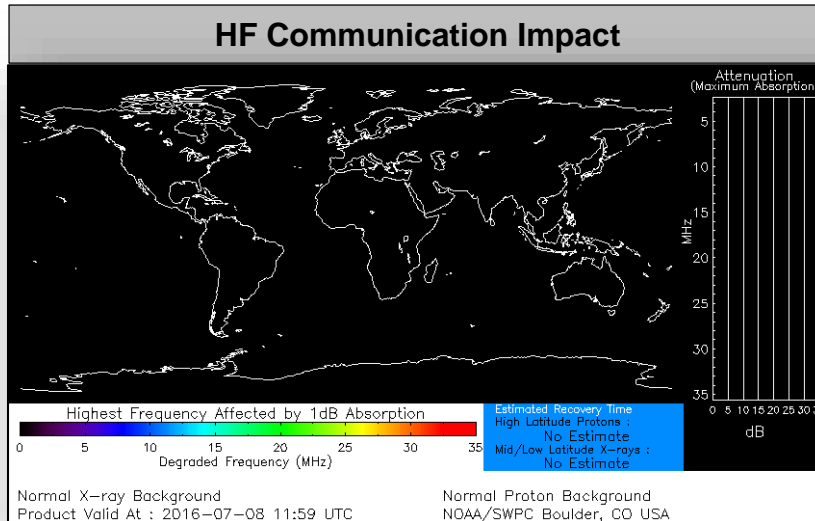


U.S. Drought Monitor



Space Weather

	Past 24 Hours	Current	Next 24 Hours
Space Weather Activity	Minor	None	Minor
Geomagnetic Storms	G1	None	G1
Solar Radiation Storms	None	None	None
Radio Blackouts	None	None	None



Joint Preliminary Damage Assessments



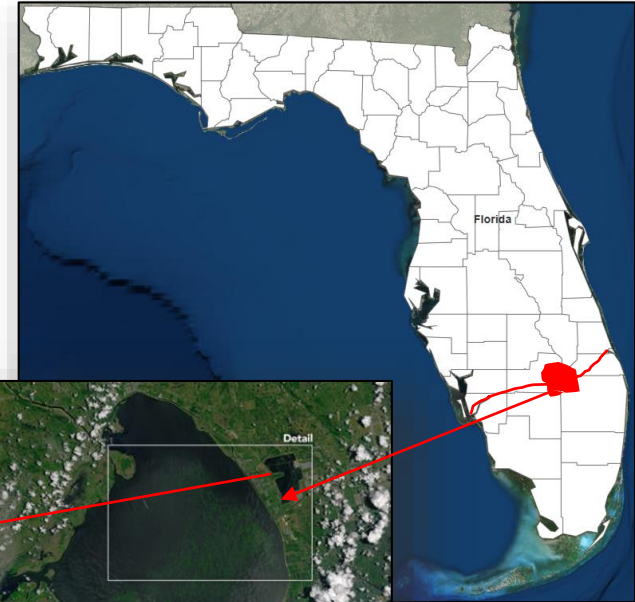
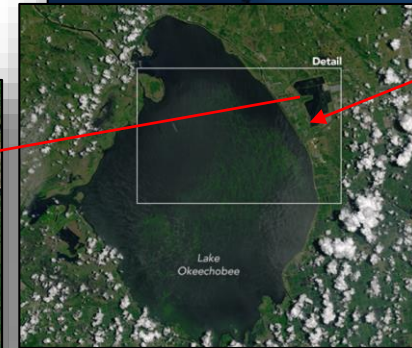
Region	State / Location	Event	IA/PA	Number of Counties		Start – End
				Requested	Complete	
VII	KS	Severe Storms and Flooding May 22 - 31, 2016	PA	31 (+8)	23	6/20 -TBD
IX	CA	Erskine Fire June 23, 2016 and continuing	IA	1	0	7/7 -TBD

Emergency Declaration Request – Florida



July 6, 2016

- Governor requested an Emergency Declaration for State of Florida as a result of toxic algae blooms
- Requesting emergency assistance due to public health and safety threats associated with unnatural discharges of nutrient-laden freshwater from Lake Okeechobee into canals that flow east into Indian River Lagoon and west into Caloosahatchee River



Disaster Requests & Declarations

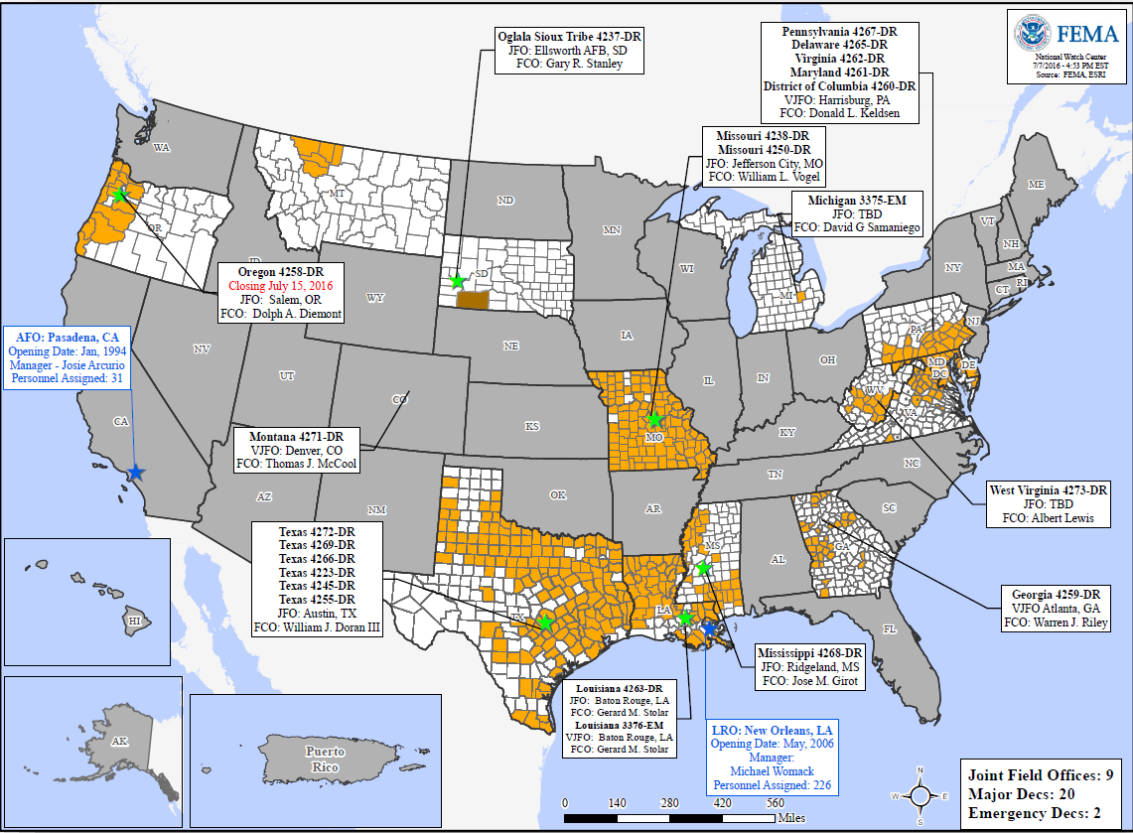


Declaration Requests in Process		Requests APPROVED (since last report)	Requests DENIED (since last report)
1	Date Requested	0	1
OK – DR Severe storms, tornadoes, straight-line winds & flooding	June 28, 2016		Denied July 7, 2016
FL – EM Toxic Algae Blooms	July 6, 2016		

Open Field Offices as of July 8, 2016



FEMA



FEMA Readiness - Deployable Teams & Assets



Deployable Teams & Assets									
Resource	Status	Total	FMC Available		Partially Available	Not Available	Detailed, Deployed, Activated	Comments	Rating Criterion
FCO		36	14	39%	0	3	19		OFDC Readiness: FCO Green Yellow Red Type 1 3+ 2 1 Type 2 4+ 3 2 Type 3 4 3 2 FDRC 3 2 1
FDRC		10	3	30%	0	1	6		
US&R		28	27	96%	1	0	0	NJ TF-1 Partially Mission Capable	
National IMAT		3	3	100%	0	0	0	West: Primary (On Call)	<ul style="list-style-type: none"> Green: 3 available Yellow: 1-2 available Red: 0 avail (<i>Individual N-IMAT red if 50% of Section Chiefs and/or Team Leader is unavailable for deployment.</i>)
Regional IMAT		13	8	62%	0	0	5	<u>Deployed:</u> RI: To WV (4273-WV) RIll: To WV (4273-WV) RIV: Team 1 to WV (4273-WV) RVI: Team 1 to TX (4266-TX) RVII: To TX (4272-TX)	<ul style="list-style-type: none"> Green: >6 teams available Yellow: 4 - 6 teams available Red: < 4 teams available R-IMAT also red if TL Ops/Log Chief is unavailable & has no qualified replacement
MERS Teams		18	14	78%	0	0	4	<u>Deployed:</u> Denton: 2 teams to TX (4272-TX) Frederick: 1 team to WV (4273-WV) Thomasville: 1 team to WV (4273-WV)	<ul style="list-style-type: none"> Green = >66% available Yellow = 33% to 66% available Red = <33% available

FEMA Readiness - National & Regional Teams



National/Regional Teams									
Resource	Status	Total	FMC Available		Partially Available	Not Available	Status	Comments	Rating Criterion
NWC	Green	5	5	100%	0	0	Watch / Steady State		<ul style="list-style-type: none"> • Green = FMC • Yellow = PMC • Red = NMC
NRCC	Green	2	2	100%	0	0	Not Activated		
HLT	Green	1	1	100%	0	0	Activated		
DEST	Green						Not Activated		
RRCCs	Green	10	10	100%	0	0	Not Activated		
RWCs/MOCs	Green	10	10	100%	0	0	Not Activated		



FEMA

FEMA's mission is to support our citizens and first responders to ensure that as a nation we work together to build, sustain, and improve our capability to prepare for, protect against, respond to, recover from, and mitigate all hazards.