



# FEMA

## Daily Operations Briefing

Wednesday, July 6, 2016

8:30 a.m. EDT

# Significant Activity: July 5-6

**Significant Events:** Severe Weather – Plains to Ohio Valley

**Tropical Activity:**

- Atlantic – Tropical cyclone activity not expected next 48 hours
- Eastern Pacific – Hurricane Blas (CAT 3), Disturbance 1 High (70%)
- Central Pacific – No tropical cyclones expected through Thursday evening

**Significant Weather:**

- Severe thunderstorms – Northern/Central Plains to Ohio Valley
- Flash flooding – Northern Plains to Middle Mississippi Valley
- Rain/thunderstorms – Southwest, Rockies, Great Plains to East Coast & Southeast
- Red Flag Warnings – NV, CO & UT
- Elevated Fire Weather – NV, AZ, UT, CO, WY & NE
- Excessive Heat – Central/Southern Plains, coastal Carolinas
- Space Weather – No space weather storms observed past 24 hours, none predicted for the next 24 hours

**Earthquake Activity:** No significant activity

**Wildfire Activity:** None

**Declaration Activity:** None

# Severe Weather – FEMA Region V



## **Situation: (INITIAL/FINAL)**

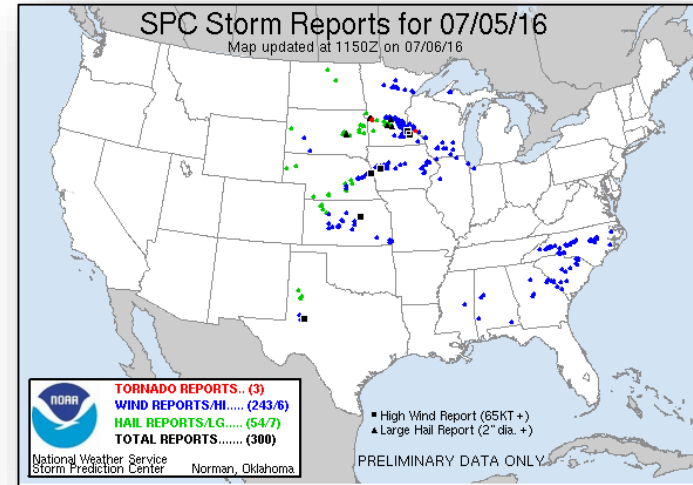
- Powerful storms impacted Minnesota and Wisconsin July 5-6 with strong winds, large hail, isolated tornadoes & heavy rain
- Preliminary reports of 3 tornadoes & 72 strong wind events in Minnesota
- Rainfall rates of over 2 inches per hour - parts of Hennepin County (Twin Cities)

## **Impacts:**

- Downed trees & power lines, minor damage to homes & other structures in MN
- Flooding along low-lying roads & poor drainage areas in Hennepin County
- Several people rescued from flooded cars
- Numerous state & local roads are closed
- No reports of injuries or fatalities
- 80 flights delayed & 4 flights diverted from Minneapolis-St. Paul International Airport; airport remains open
- High winds caused delays for Northstar trains between Elk River & Big Lake
- 25k customers without power in the affected region (*\*DOE Eagle-I, as of 6:00 am EDT*)

## **Response:**

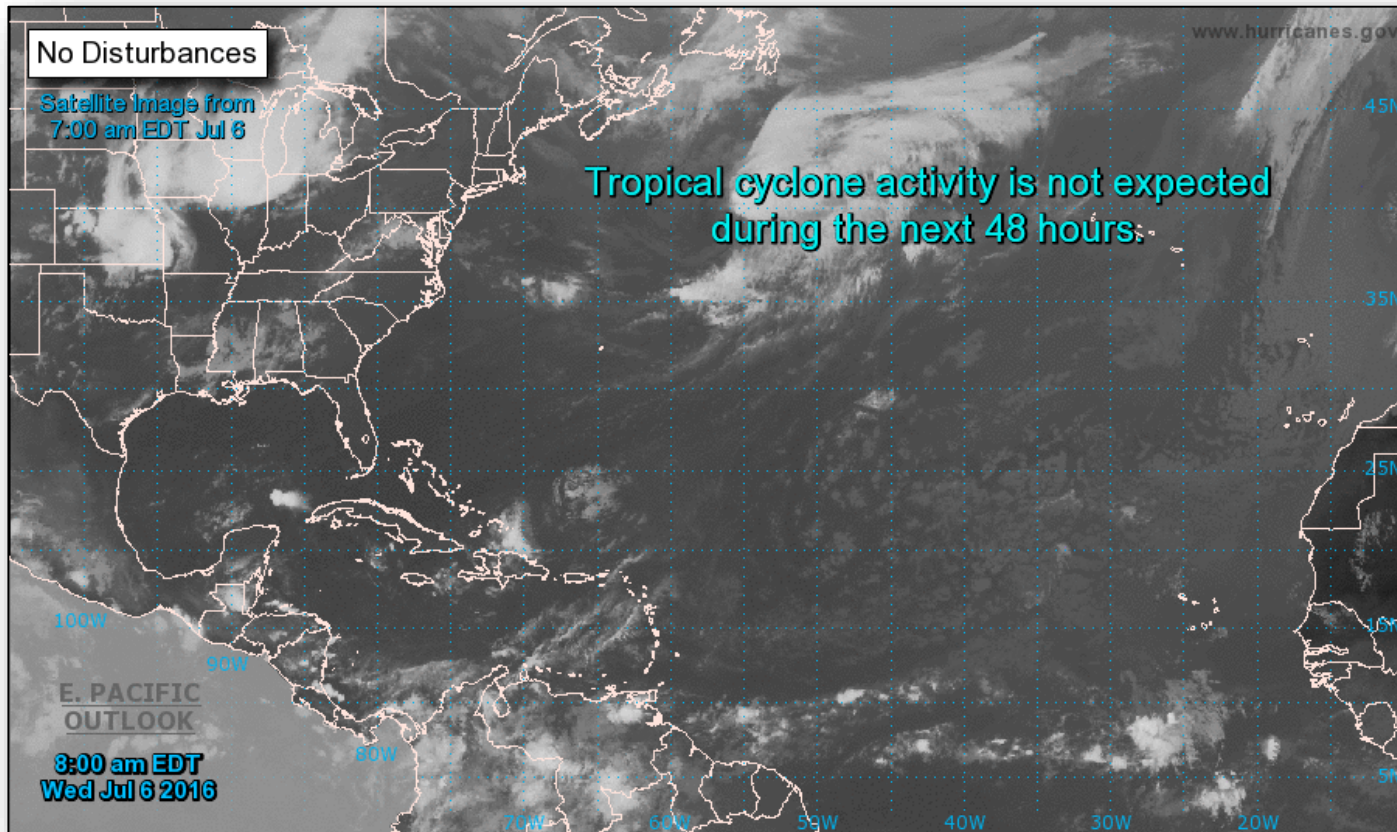
- The MN and WI state EOC's are not activated.
- FEMA Region V RRCC not activated; RWC remains at Watch/Steady State
- No requests for FEMA assistance



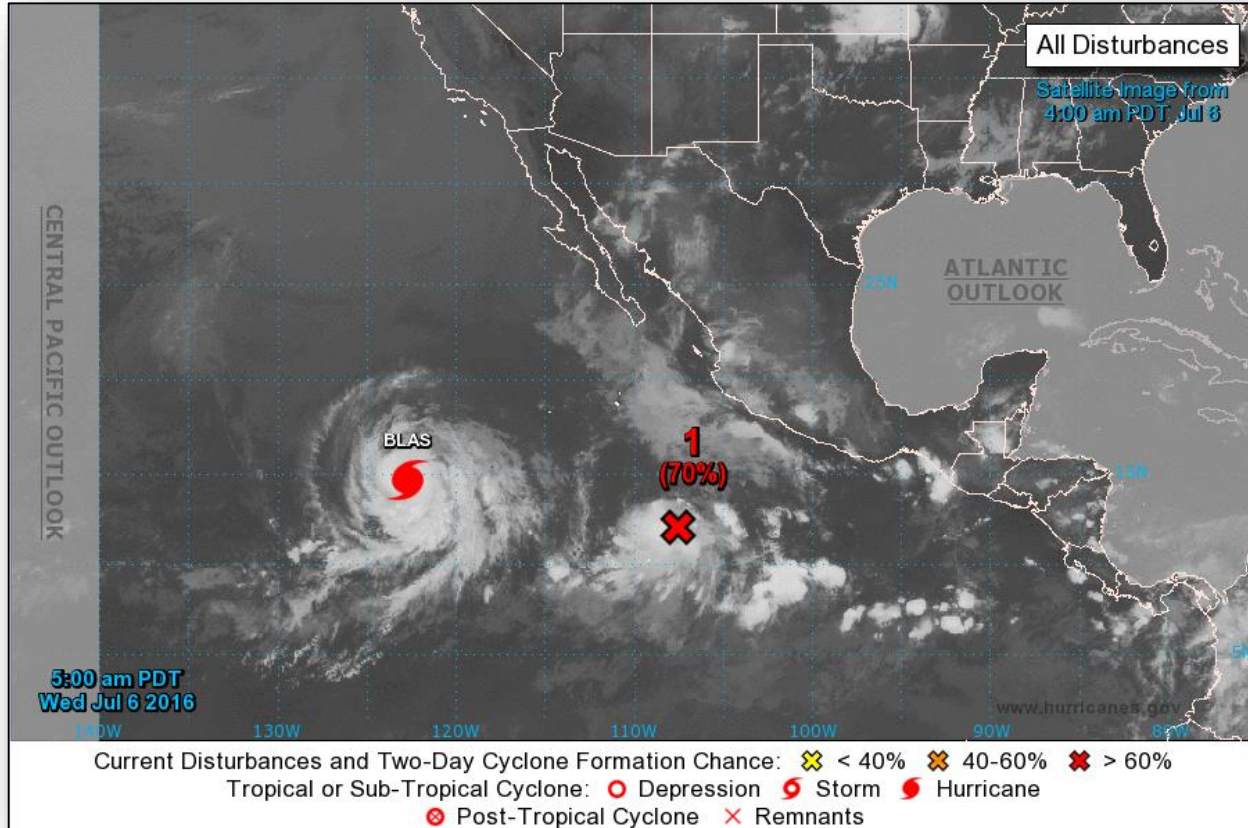
# Tropical Outlook: Atlantic



FEMA

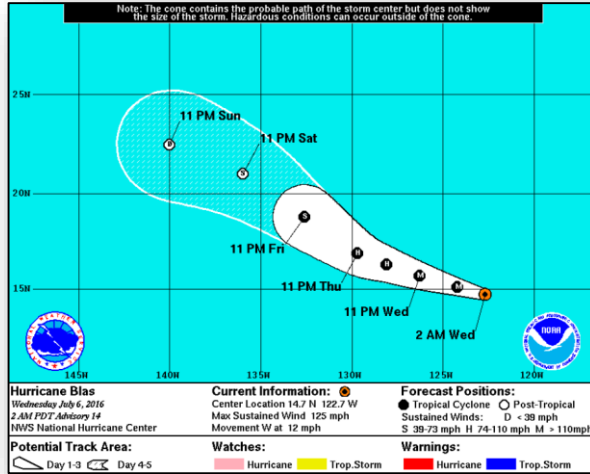


# Tropical Outlook: Eastern Pacific



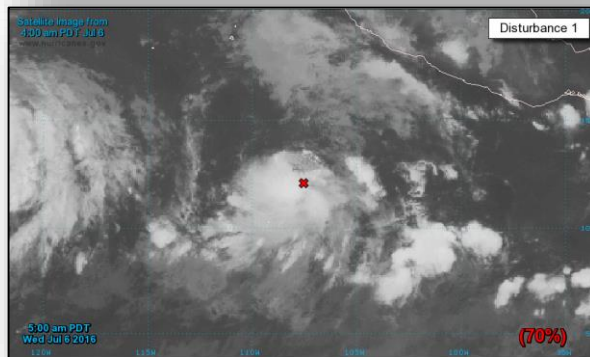


# Tropical Outlook: Eastern Pacific



## Hurricane Blas: (Advisory 14 as of 5:00 a.m. EDT)

- Located 1,010 miles WSW of the southern tip of Baja California
- Moving W at 12 mph
- A turn WNW expected later today; motion expected to continue through Thursday
- Maximum sustained winds are 125 mph (CAT 3)
- Slow weakening forecast today followed by faster weakening on Thursday
- Hurricane force winds extend outwards up to 35 miles from the center
- Tropical storm force winds extend outward up to 150 miles
- No coastal watches or warnings in effect



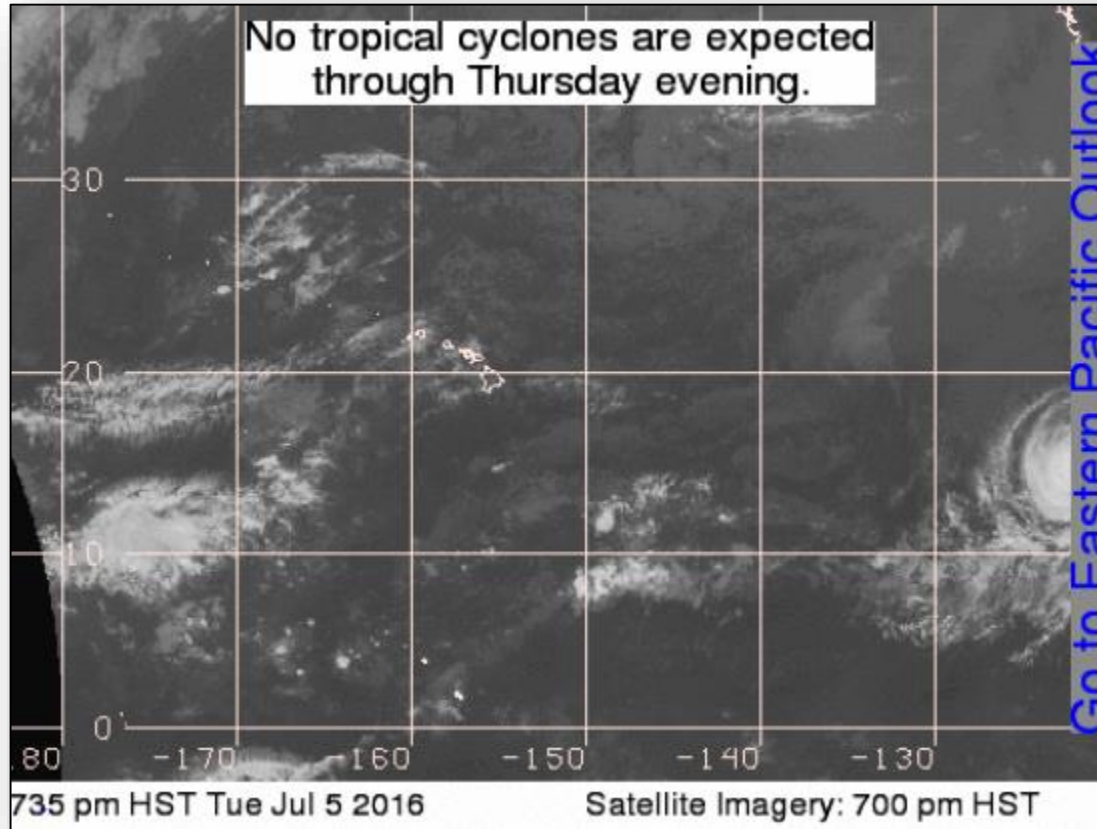
## Disturbance 1: (As of 5:00 a.m. EDT)

- Located 525 miles SSW of Manzanillo, Mexico
- Moving W at 10 mph
- Continued development of this system is expected
- A tropical depression is likely to form during the next few days
- Formation chance through 48 hours High (70%)
- Formation chance through 5 days High (90%)

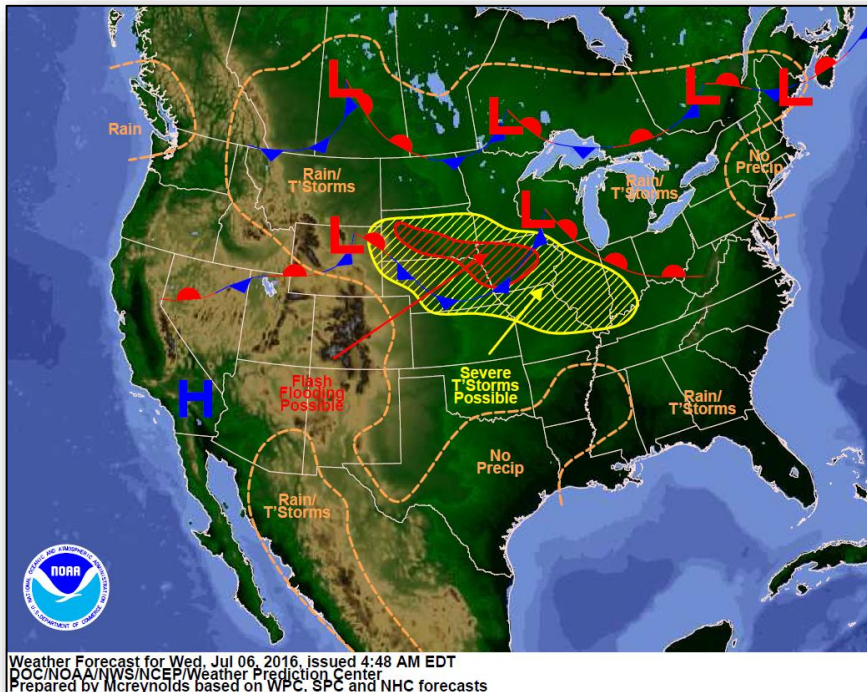
# Tropical Outlook: Central Pacific



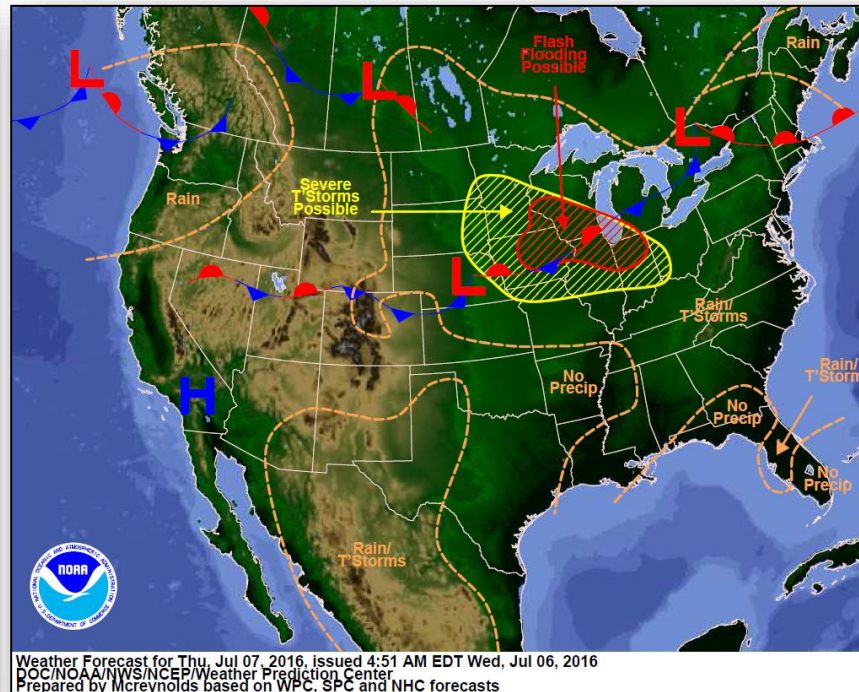
FEMA



# National Weather Forecast



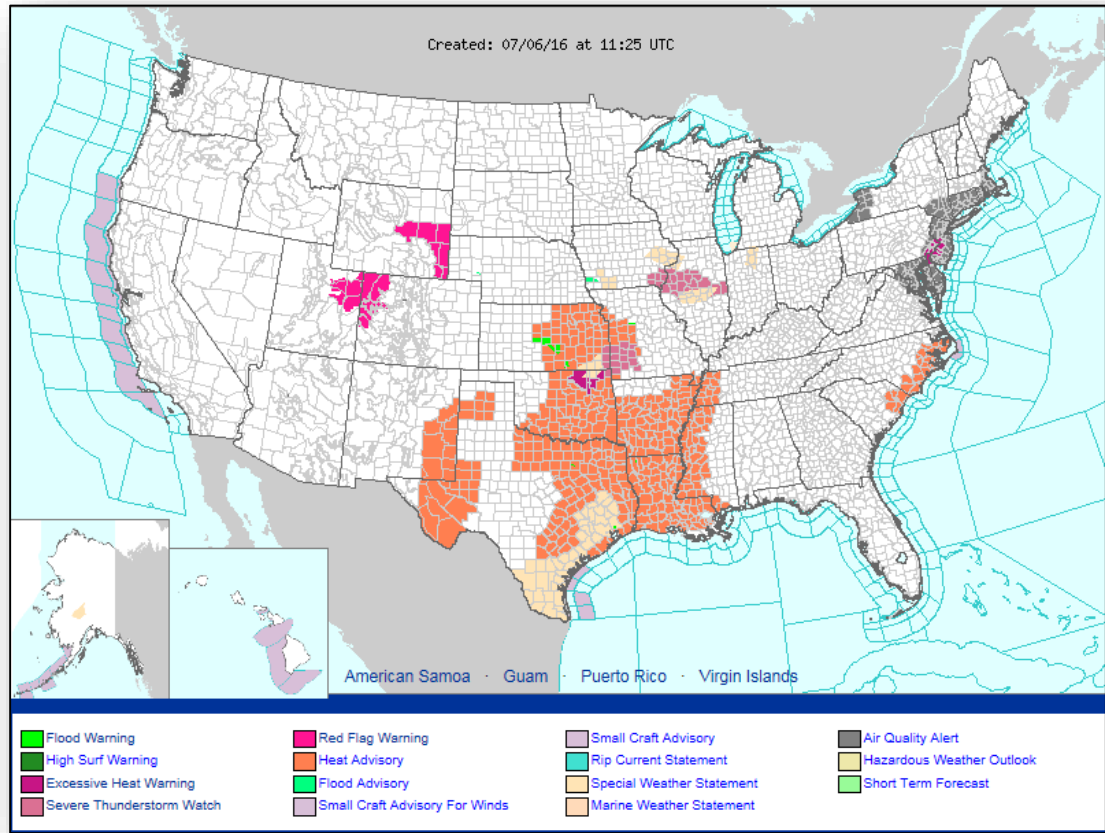
*Today*



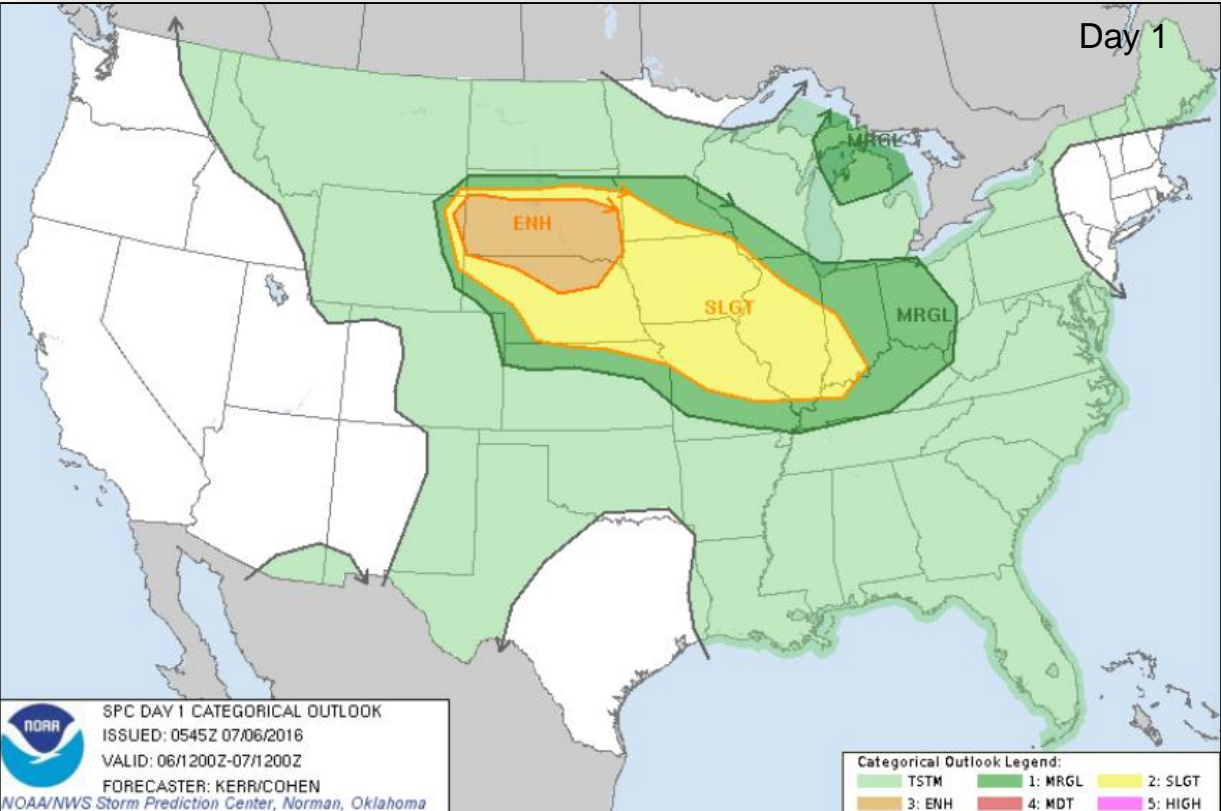
*Tomorrow*



# Active Watches & Warnings



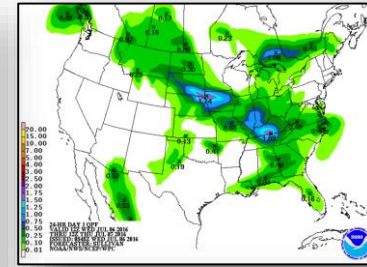
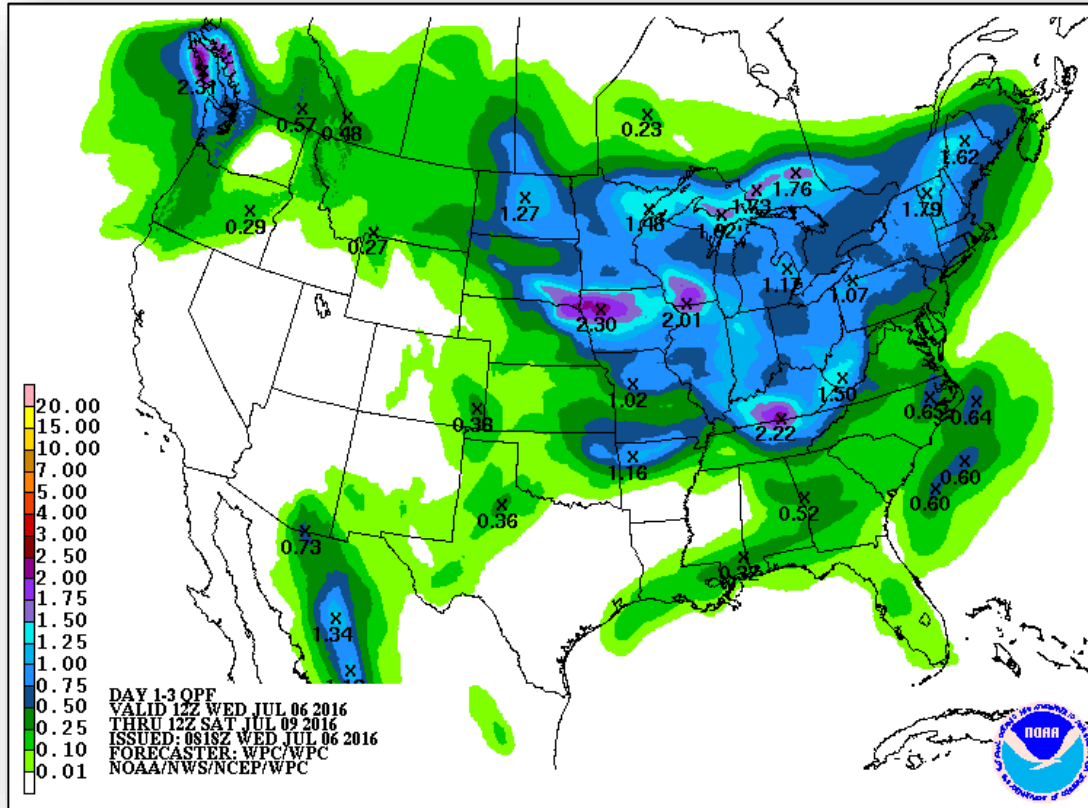
# Severe Weather Outlook: Day 1 - 3



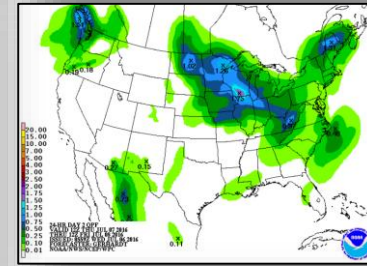
# Precipitation Forecast: 1 - 3 Day



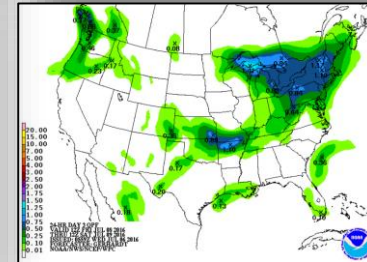
FEMA



Day 1



Day 2

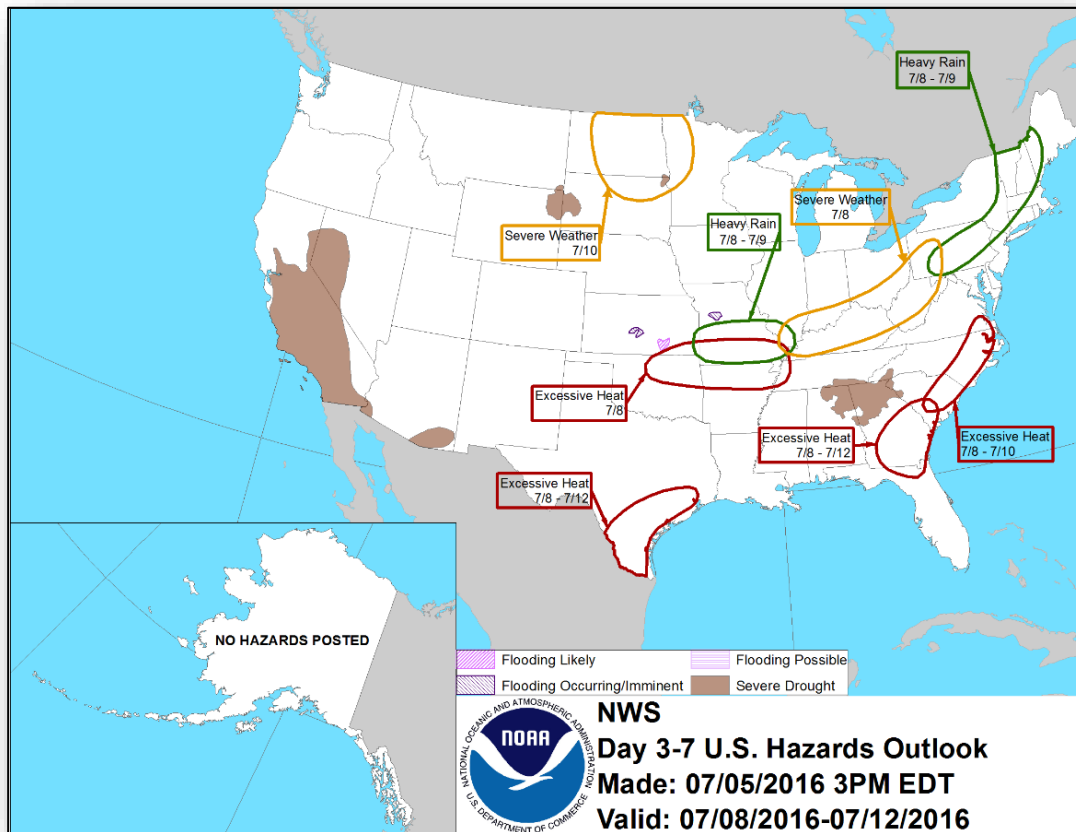


Day 3

# Hazards Outlook: July 8-12



FEMA



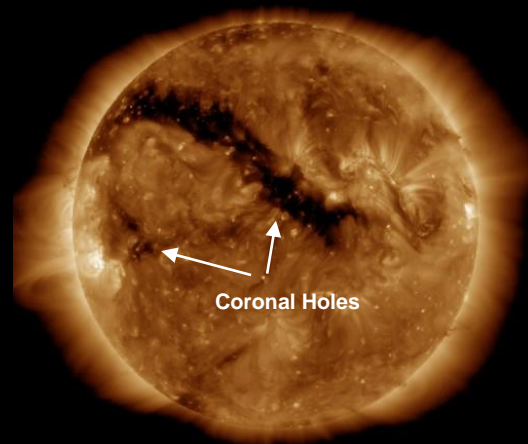
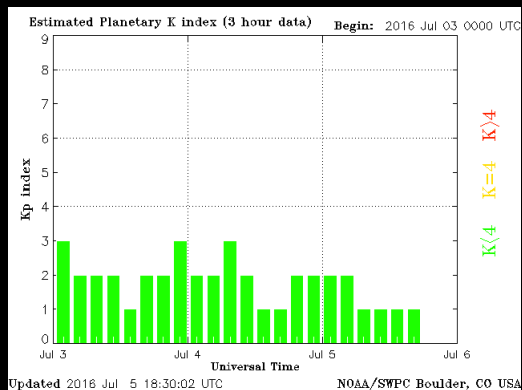
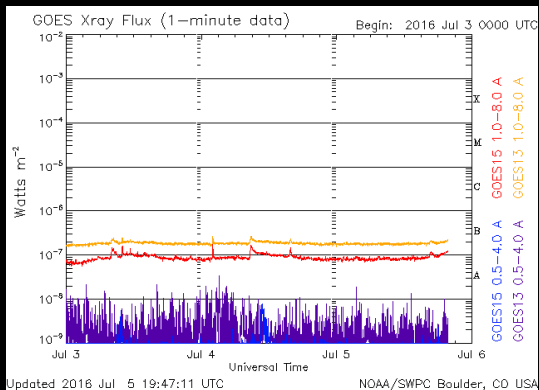


# Space Weather Summary/Outlook

Space Weather Summary July 6th, 2016	Past 48 Hours	Current	Forecast: July 7 <sup>th</sup> – 8 <sup>th</sup>
Solar Flare (R Scale) Radio Blackout	None	None	R1-R2: 1% R3-R5: 1%
Solar Radiation Storms (S Scale)	None	None	S1 or > 1%
Geomagnetic Storms (G Scale)	None	None	G1 Watch for 7 <sup>th</sup>

## Summary of Recent Activity/Outlook:

- Very quiet across the R and S scales
- Coronal hole may drive G1 conditions on July 7<sup>th</sup> and again on the 11<sup>th</sup>
- Risk of severe or extreme activity is very low at this time



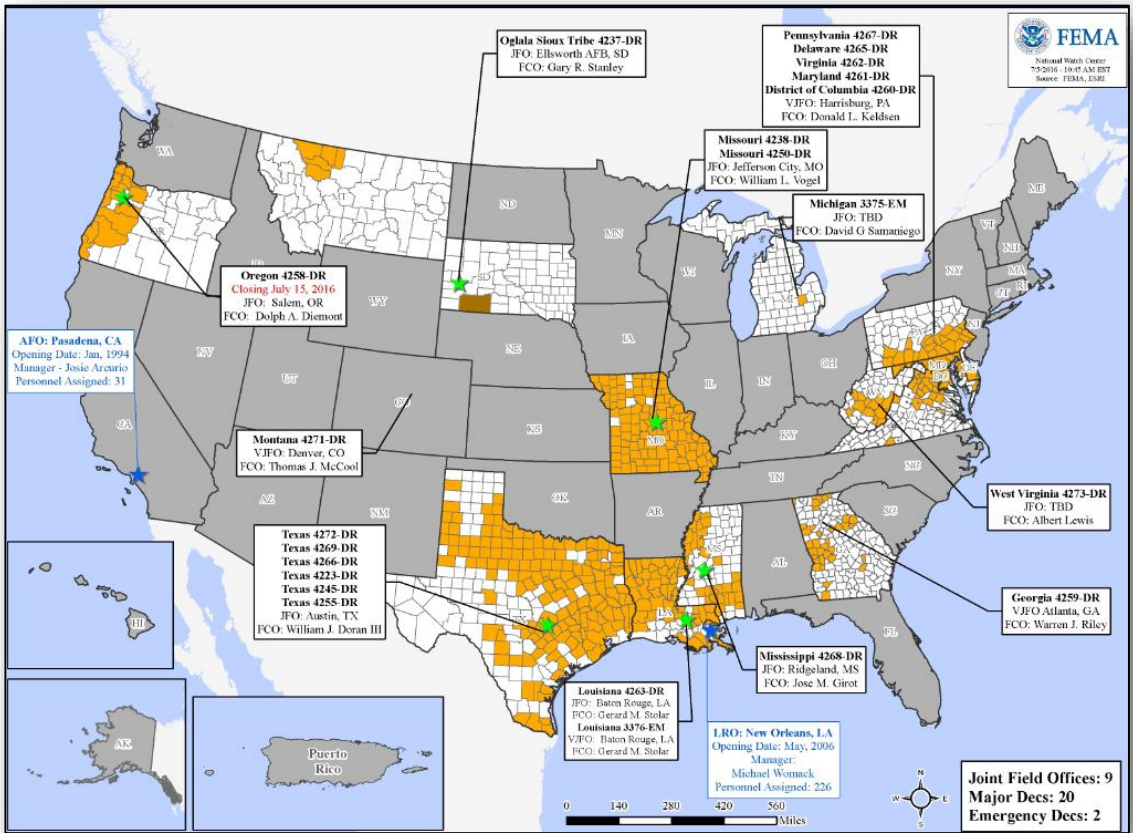
David Marshall  
SWPC  
July 6th, 2016

# Disaster Requests & Declarations



Declaration Requests in Process		Requests APPROVED (since last report)	Requests DENIED (since last report)
1	Date Requested	0	0
OK – DR Severe storms, tornadoes, straight-line winds & flooding	June 28, 2016		

# Open Field Offices as of July 6, 2016



# FEMA Readiness: Deployable Teams & Assets



Deployable Teams & Assets									
Resource	Status	Total	FMC Available		Partially Available	Not Available	Detailed, Deployed, Activated	Comments	Rating Criterion
FCO	Yellow	33	15	45%	0	1	17		OFDC Readiness: FCO Green Yellow Red Type 1 3+ 2 1 Type 2 4+ 3 2 Type 3 4 3 2 FDRC 3 2 1
FDRC	Green	9	5	56%	0	0	4		
US&R	Green	28	27	96%	1	0	0	NJ TF-1 Partially Mission Capable	<ul style="list-style-type: none"> <li>Green = Available/FMC</li> <li>Yellow = Available/PMC</li> <li>Red = Out-of-Service</li> <li>Blue = Assigned/Deployed</li> </ul>
National IMAT	Green	3	3	100%	0	0	0	West: Primary (On Call)	<ul style="list-style-type: none"> <li>Green: 3 available</li> <li>Yellow: 1-2 available</li> <li>Red: 0 avail (<i>Individual N-IMAT red if 50% of Section Chiefs and/or Team Leader is unavailable for deployment.</i>)</li> </ul>
Regional IMAT	Green	13	8	62%	0	0	5	<b>Deployed:</b> RI: To WV (4273-WV) RI: To WV (4273-WV) RIV: Team 1 to WV (4273-WV) RVI: Team 1 to TX (4266-TX) RVII: To TX (4272-TX)	<ul style="list-style-type: none"> <li>Green: &gt;6 teams available</li> <li>Yellow: 4 - 6 teams available</li> <li>Red: &lt; 4 teams available</li> </ul> R-IMAT also red if TL Ops/Log Chief is unavailable & has no qualified replacement
MERS Teams	Green	18	13	70%	0	0	5	<b>Deployed:</b> Denton: 2 teams to TX (4272-TX) Frederick: 1 team to WV (4273-WV) Thomasville: 1 team to WV (4273-WV) Maynard: 1 team to WV (4273-WV)	<ul style="list-style-type: none"> <li>Green = &gt;66% available</li> <li>Yellow = 33% to 66% available</li> <li>Red = &lt;33% available</li> </ul>



# FEMA Readiness: National & Regional Teams



National/Regional Teams									
Resource	Status	Total	FMC Available		Partially Available	Not Available	Status	Comments	Rating Criterion
NWC		5	5	100%	0	0	Watch / Steady State		<ul style="list-style-type: none"> <li>• Green = FMC</li> <li>• Yellow = PMC</li> <li>• Red = NMC</li> </ul>
NRCC		2	2	100%	0	0	Not Activated		
HLT		1	1	100%	0	0	Activated		
DEST							Not Activated		
RRCCs		10	10	100%	0	0	Not Activated		
RWCs/MOCs		10	10	100%	0	0	Not Activated		



# FEMA

**FEMA's mission is to support our citizens and first responders to ensure that as a nation we work together to build, sustain, and improve our capability to prepare for, protect against, respond to, recover from, and mitigate all hazards.**