



# **FEMA**

## **Daily Operations Briefing**

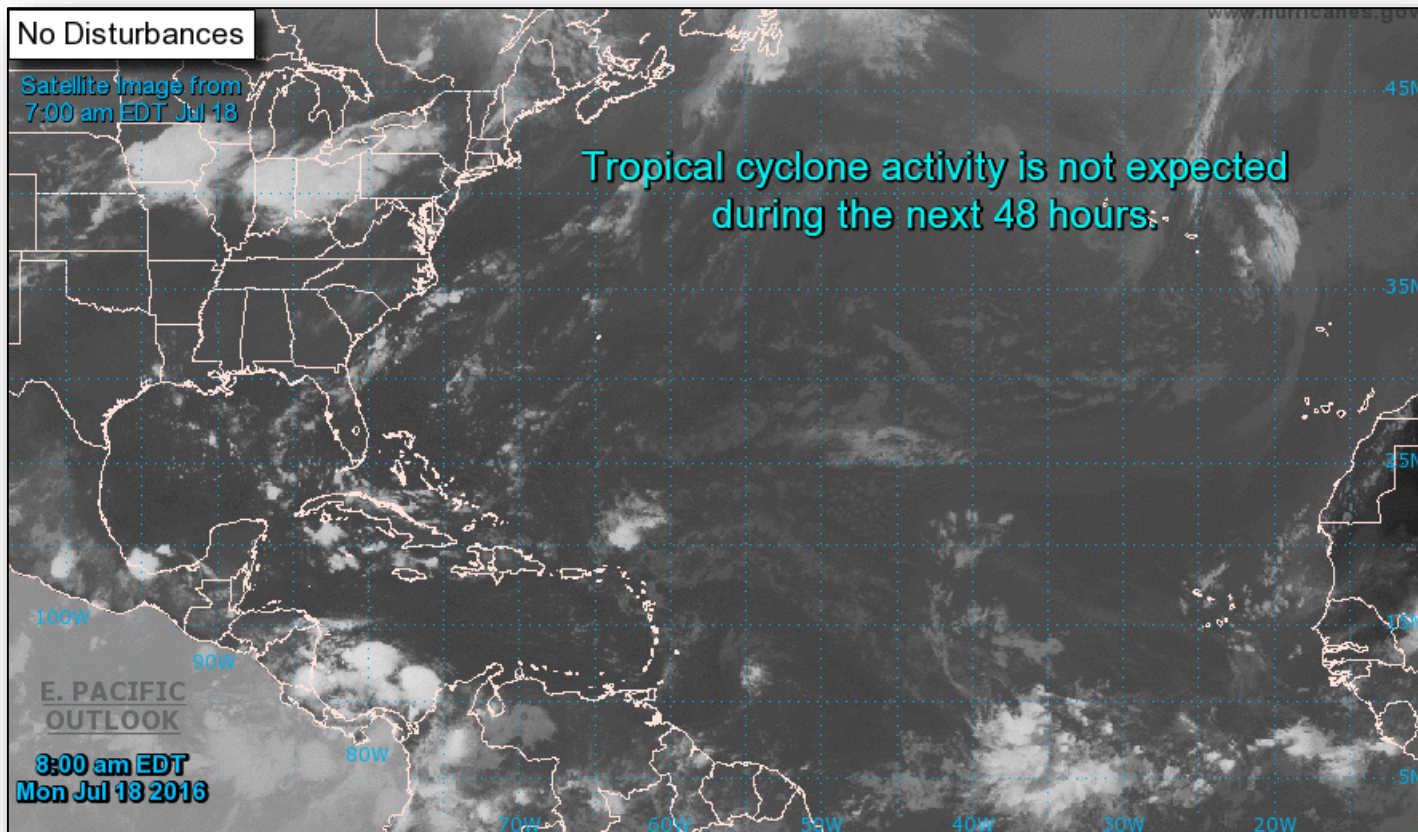
**Monday, July 18, 2016**

**8:30 a.m. EDT**

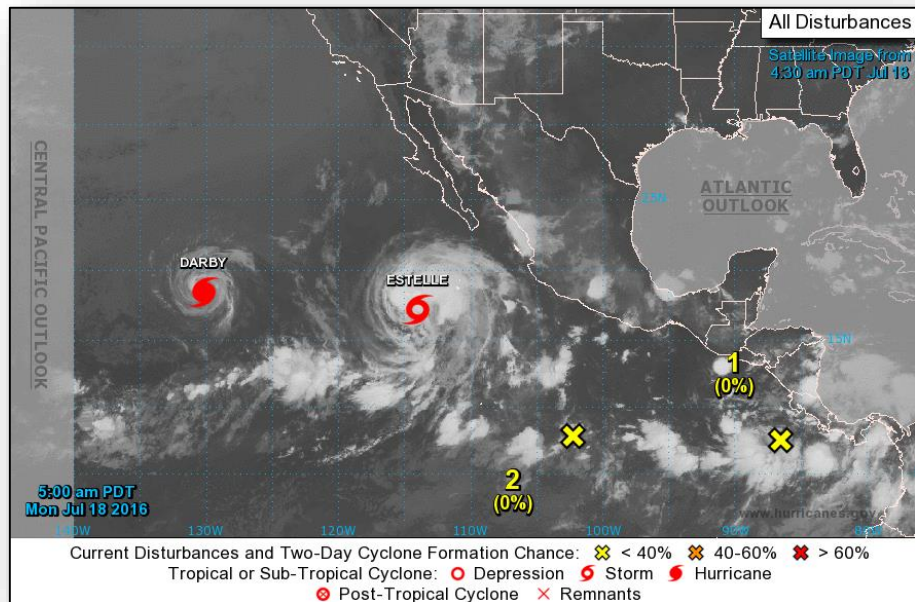
# Tropical Outlook - Atlantic



FEMA



# Tropical Outlook - Eastern Pacific



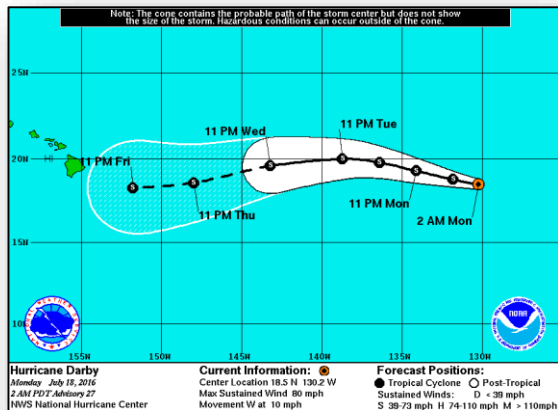
## **Disturbance 1:** (as of 8:00 a.m. EDT)

- Located south of Gulf of Tehuantepec
- Moving WNW at 10 mph
- Conditions forecast to be conducive for development
- Tropical depression could form by late this week
- Formation chance through 48 hours: Low (near 0%)
- Formation chance through 5 days: Medium (50%)

## **Disturbance 2:** (as of 8:00 a.m. EDT)

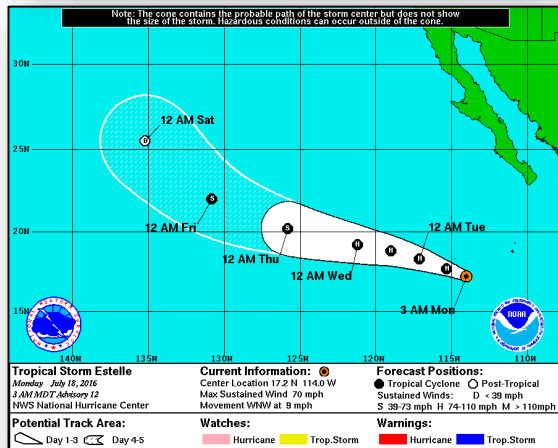
- Located several hundred miles SSW of Acapulco, Mexico
- Moving W at 10 mph
- Some slow development is possible later this week
- Formation chance through 48 hours: Low (near 0%)
- Formation chance through 5 days: Low (20%)

# Tropical Outlook - Eastern Pacific



## Hurricane Darby (Advisory #27 as of 5:00 a.m. EDT)

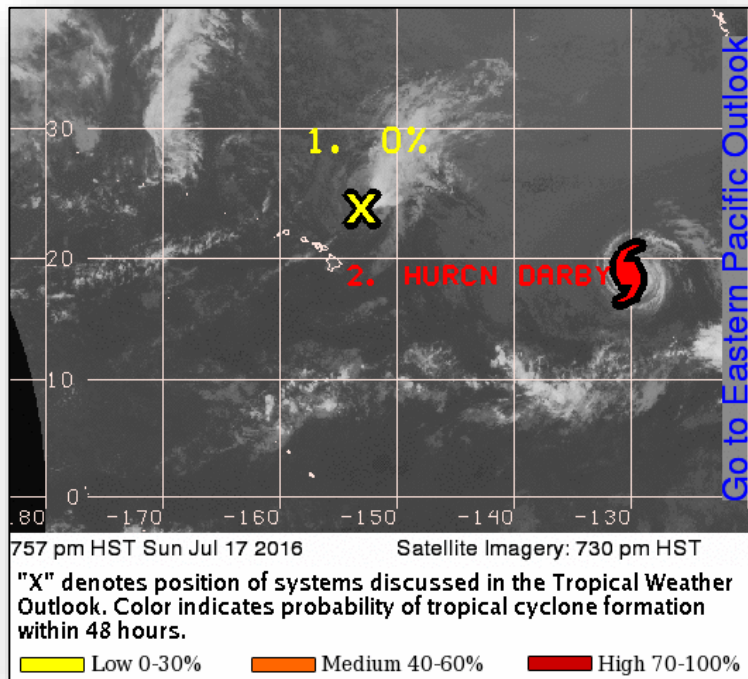
- Located 1,345 miles W of southern tip of Baja California, Mexico
- Moving W at 10 mph
- W to WNW motion at slightly faster forward speed expected next couple of days
- Maximum sustained winds 80 mph (Category 1 hurricane)
- Weakening forecast next 48 hours
- Should become a tropical storm later today
- Hurricane force winds extend 30 miles
- Tropical storm force winds extend 90 miles



## Tropical Storm Estelle: (Advisory #12 as of 5:00 a.m. EDT)

- Located 475 miles SW of southern tip of Baja California, Mexico
- Moving WNW at 9 mph
- Maximum sustained winds 70 mph
- Strengthening forecast next couple of days; expected to become a hurricane later today
- Tropical storm force winds extend 150 miles

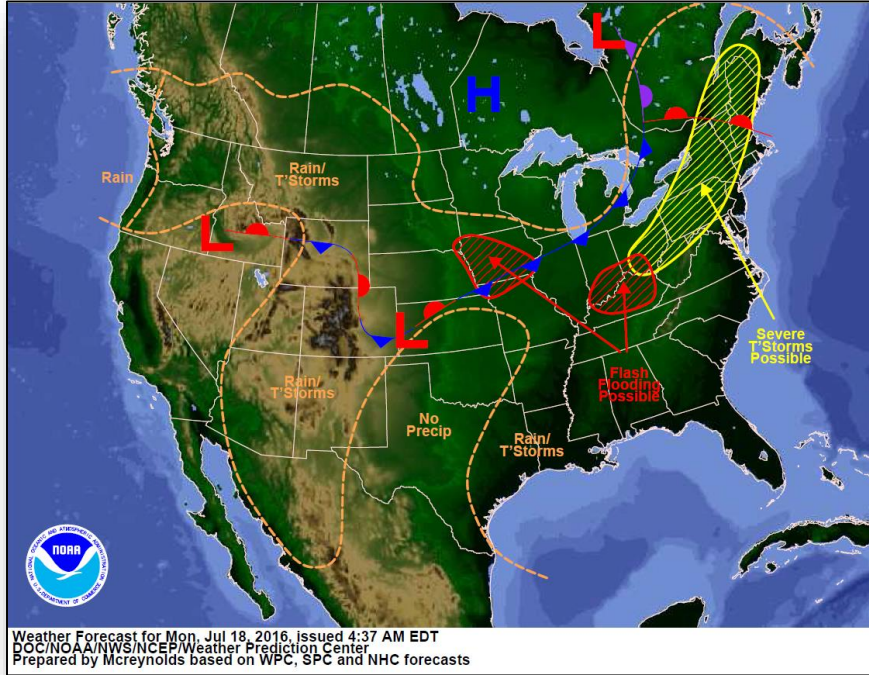
# Tropical Outlook - Central Pacific



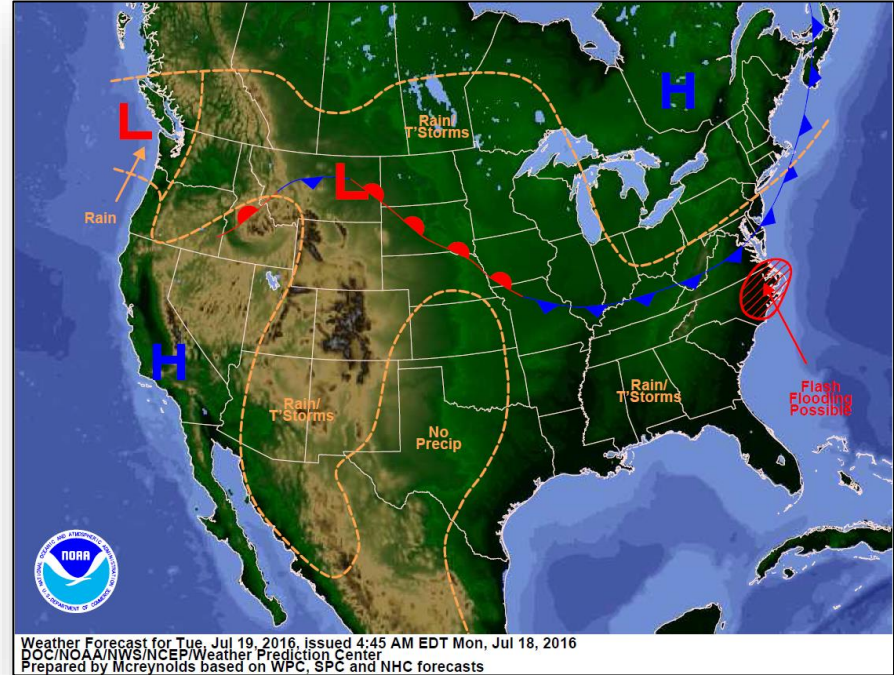
## **Disturbance 1:** (as of 2:00 a.m. EDT)

- Remnant of ex-Tropical Cyclone Celia
- Located 400 miles ENE of Honolulu, HI
- Moving W at 10 mph
- Conditions not conducive for redevelopment
- Formation chance through 48 hours: Low (near 0%)

# National Weather Forecast

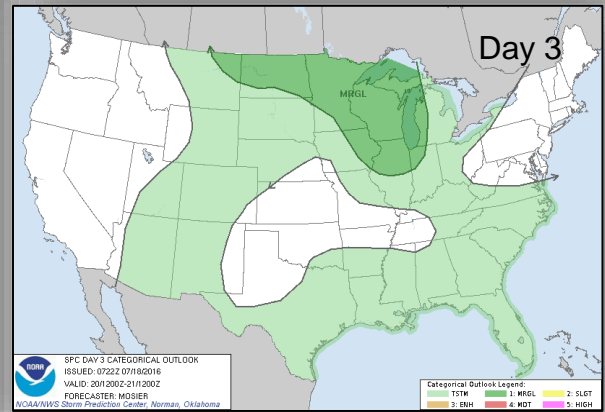
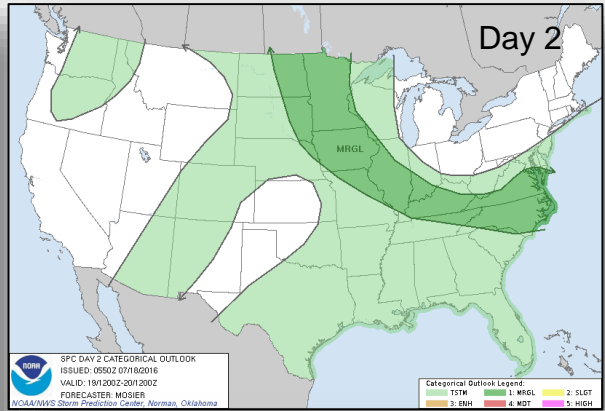
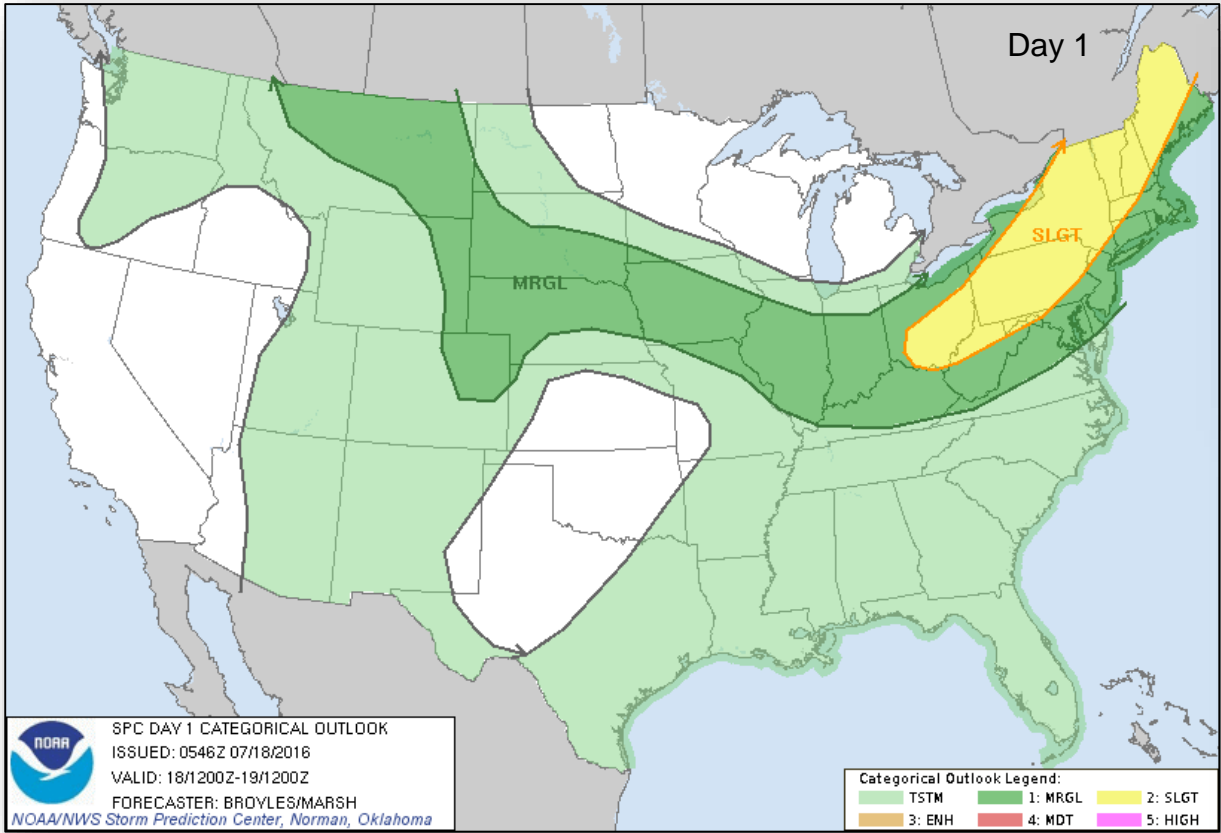


*Today*



*Tomorrow*

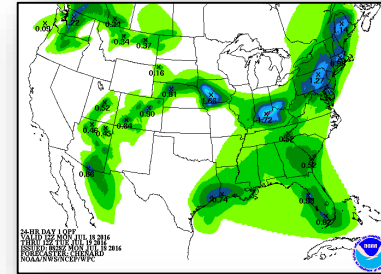
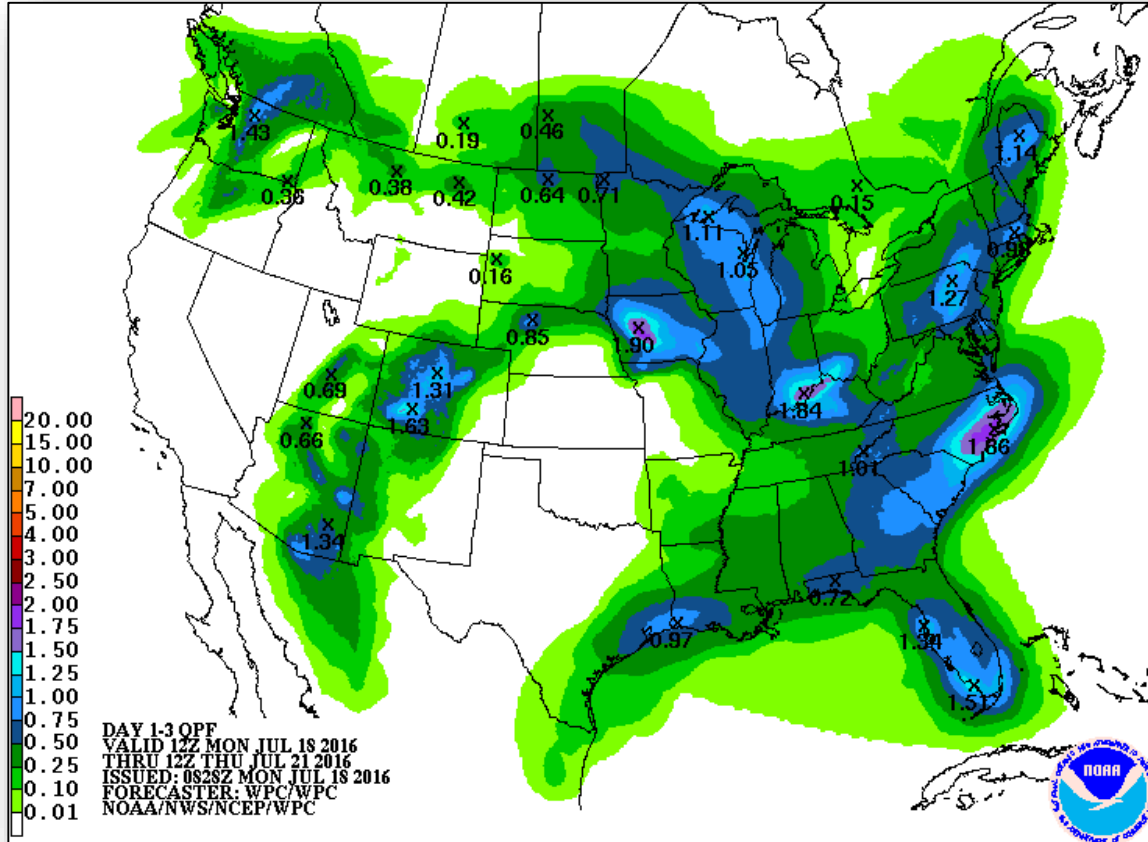
# Severe Weather Outlook – Days 1-3



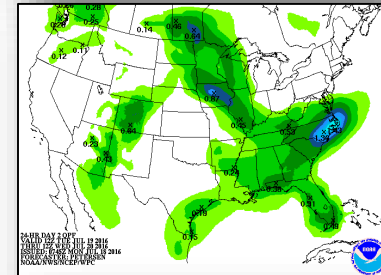
# Precipitation Forecast – Days 1-3



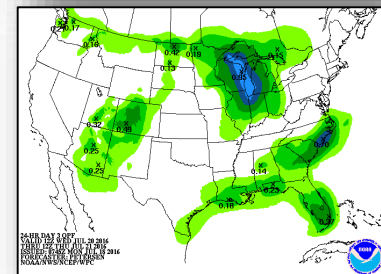
FEMA



Day 1



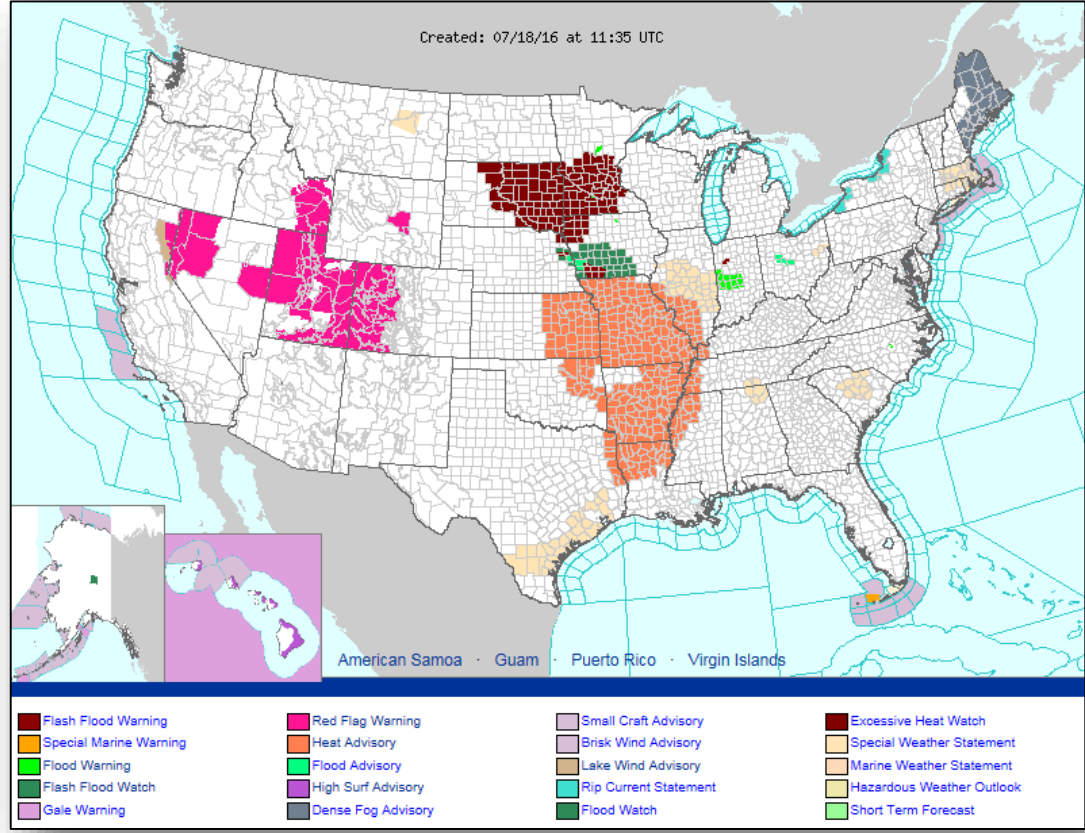
Day 2



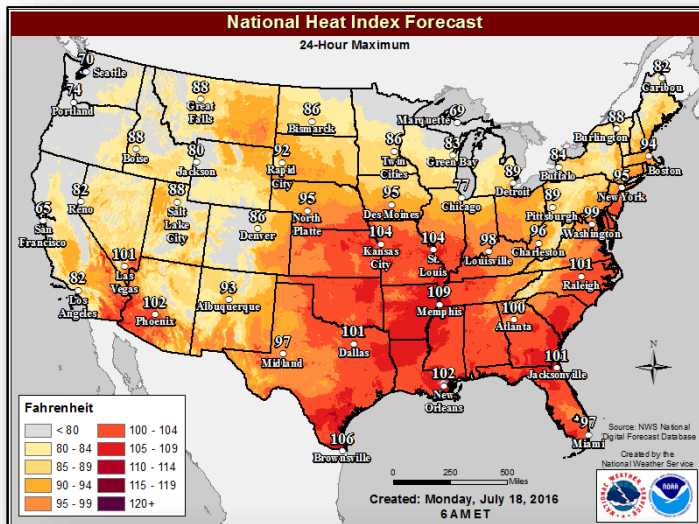
Day 3



# Active Watches & Warnings



# Dangers of Excessive Heat



## Outlook:

Above normal temperatures and humid conditions will create elevated to dangerous heat index this week, particularly across the central U.S.

## Health Dangers of Heat:

Heat is one of the leading weather-related killers in the U.S., resulting in hundreds of fatalities and heat-related illnesses each year, including:

- Hyperthermia, Heat Cramps, Heat Exhaustion and Heat Stroke

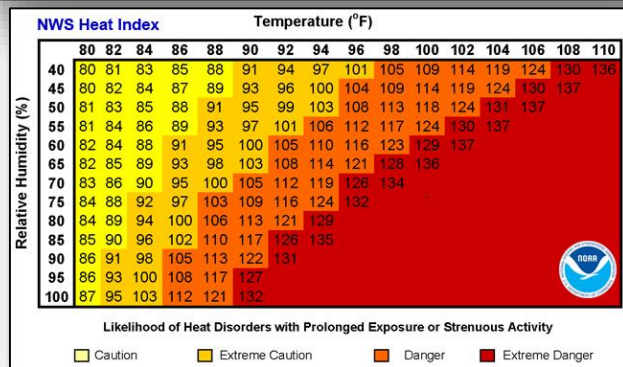
## Preparedness Activities:

- Stay indoors as much as possible and limit exposure to the sun
- Remain hydrated; drink water often; avoid strenuous outdoor work
- Dress in loose-fitting, lightweight and light-colored clothing covering as much skin as possible
- Never leave children or pets alone in closed vehicles
- Know the symptoms of heat exhaustion; monitor elderly and children

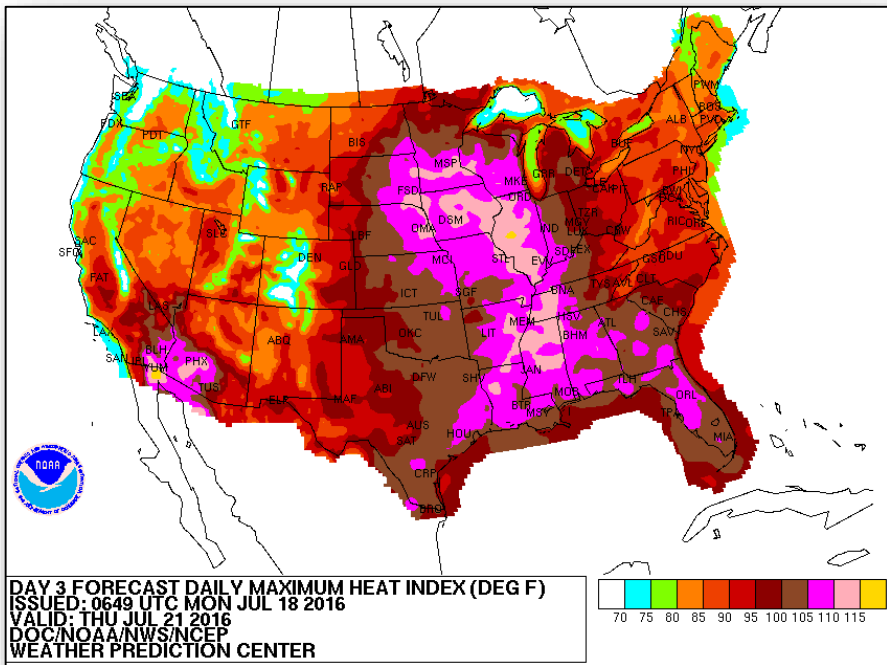
## Additional Resources:

<http://www.ready.gov/heat>

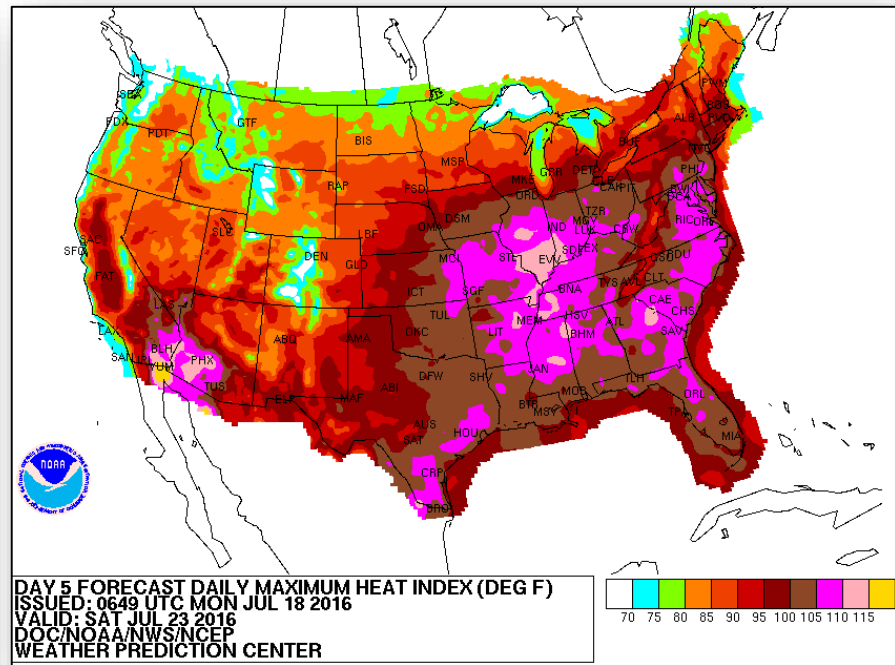
<http://www.nws.noaa.gov/om/heat/index.shtml>



# Prolonged Heat Wave

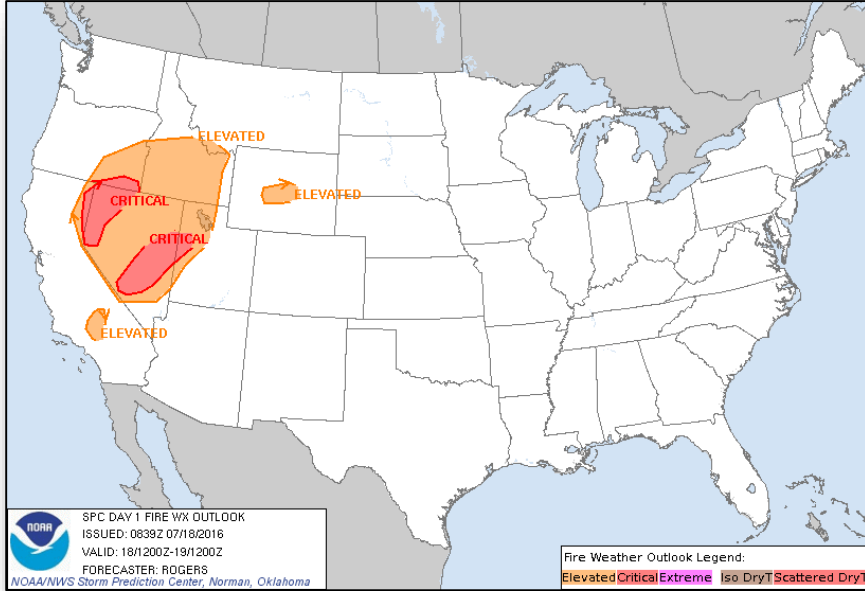


Thursday

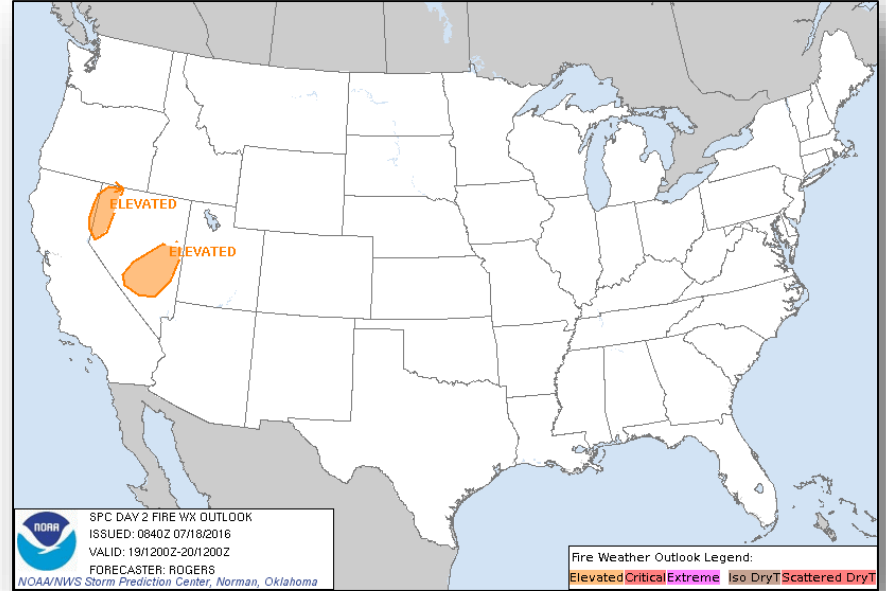


Saturday

# Fire Weather Outlook

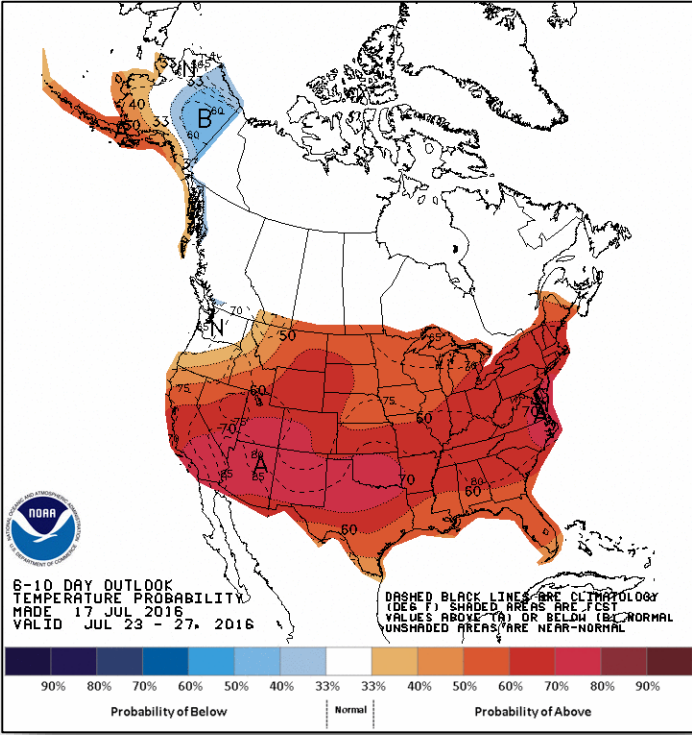


Day 1

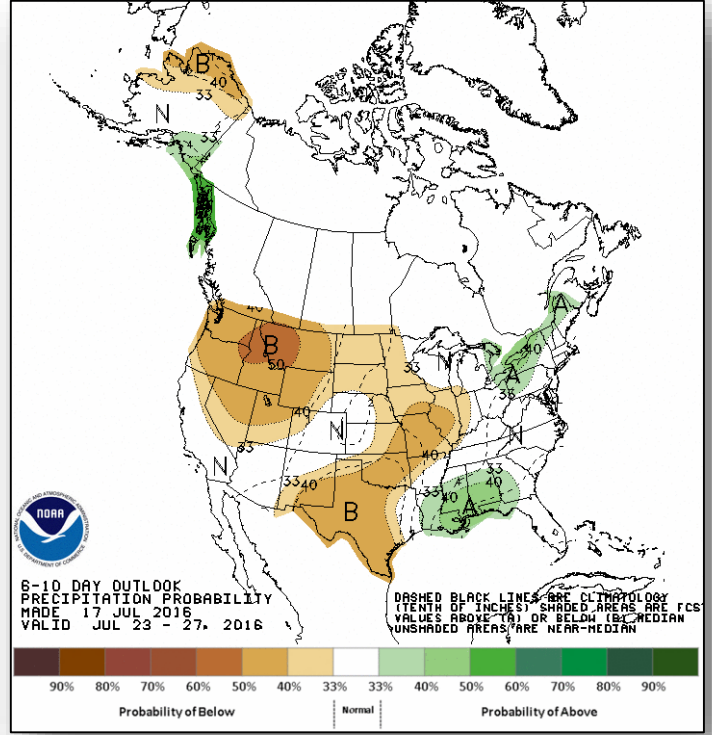


Day 2

# 6 - 10 Day Outlooks



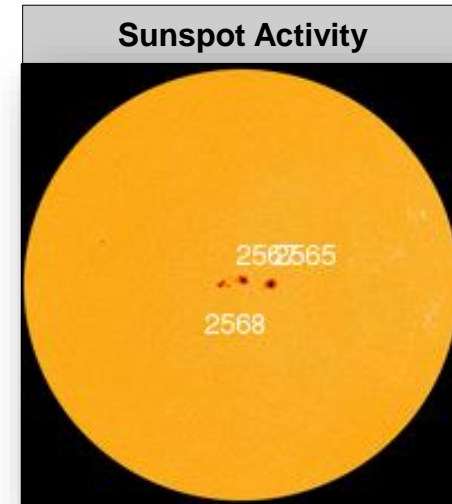
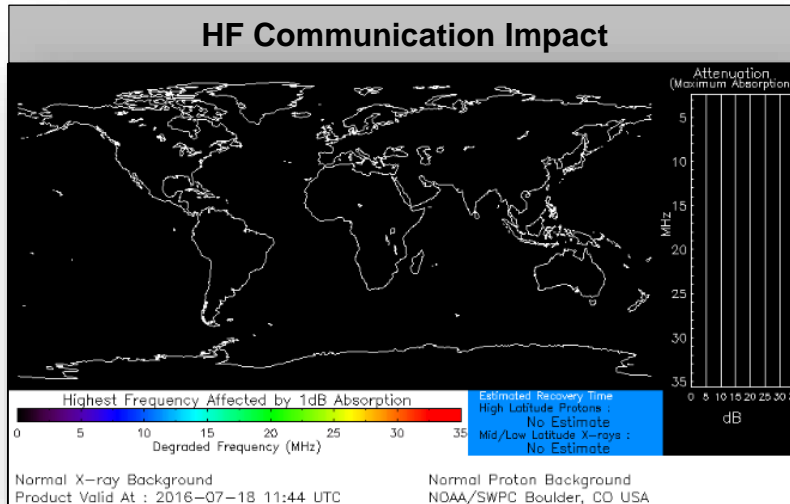
6 - 10 Day Temperature Probability



6 - 10 Day Precipitation Probability

# Space Weather

	Past 24 Hours	Current	Next 24 Hours
<b>Space Weather Activity</b>	<b>None</b>	<b>None</b>	<b>None</b>
Geomagnetic Storms	None	None	None
Solar Radiation Storms	None	None	None
Radio Blackouts	None	None	None



# Wildfire Summary



Fire Name (County)	FMAG #	Acres Burned	% Contained	Evacuations (Residents)	Structures Threatened	Structures Damaged / Destroyed	Fatalities / Injuries
<b>New Mexico</b>							
Timberon Fire (FINAL) (Otero County)	FMAG-5134-FM-NM	268	60%	Lifted	0 homes	4 homes / 76 (44 homes)	0 / 0

# Joint Preliminary Damage Assessments



Region	State / Location	Event	I/PA	Number of Counties		Start – End
				Requested	Complete	
VII	KS	Severe Storms and Flooding May 22 - 31, 2016	PA	31	18	6/20 – TBD

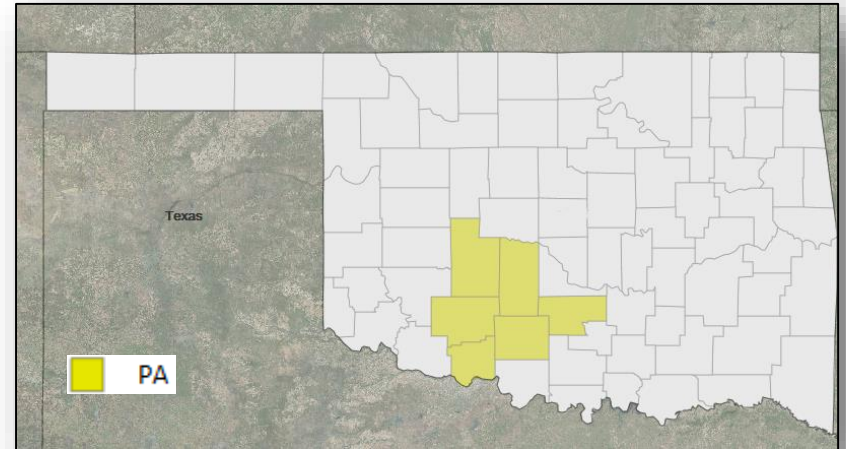


# Major Disaster Declaration Approved– OK



## FEMA-4274-DR-OK

- Major Disaster Declaration approved July 15, 2016 for state of Oklahoma for severe storms and flooding that occurred June 11-13, 2016
- Provides:
  - Public assistance for 6 counties
  - Hazard Mitigation statewide
- FCO is Charles Maskell

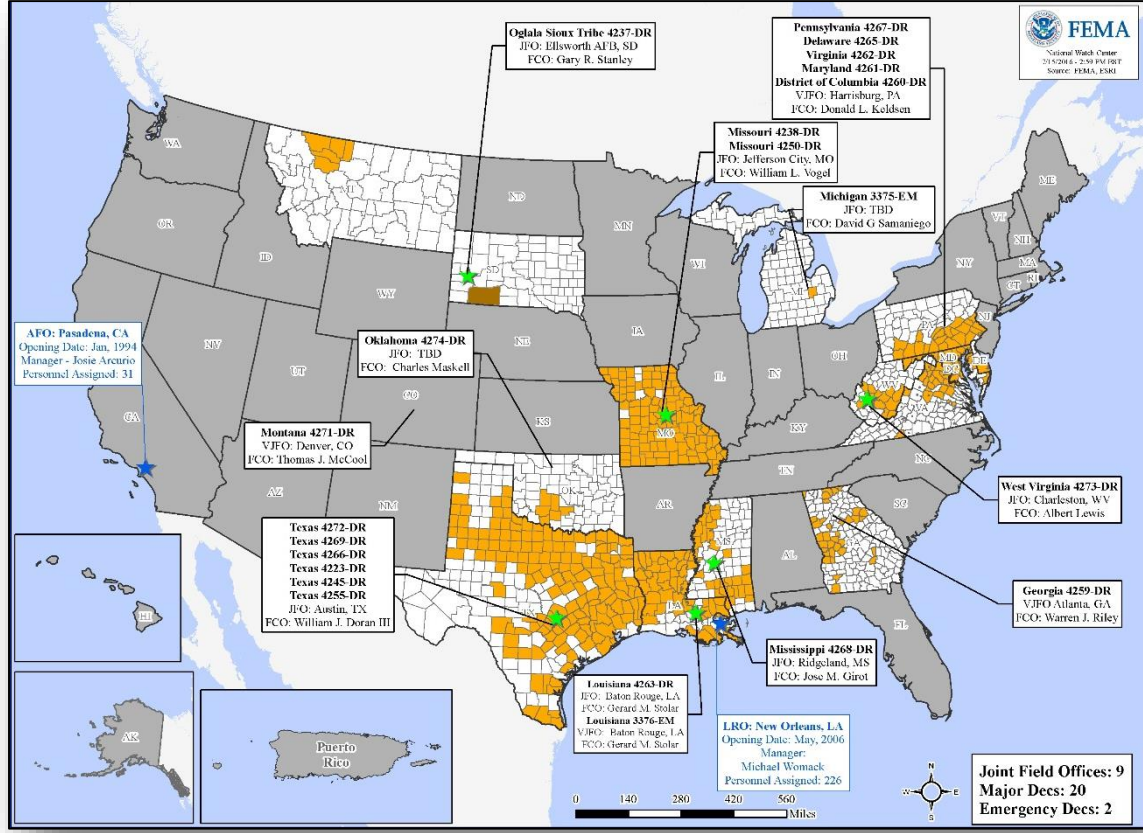


# Disaster Requests & Declarations



Declaration Requests in Process		Requests APPROVED (since last report)	Requests DENIED (since last report)
0	Date Requested	1	1
FL – EM Toxic Algae Blooms	July 6, 2016		Denied July 15, 2016
OK – DR Severe Storms, Tornadoes, Straight-line Winds, and Flooding	July 7, 2016	Declared July 15, 2016	

# Open Field Offices as of July 18, 2016



# FEMA Readiness - Deployable Teams & Assets



Deployable Teams & Assets									
Resource	Status	Total	FMC Available		Partially Available	Not Available	Detailed, Deployed, Activated	Comments	Rating Criterion
FCO		37	11	30%	0	1	25		OFDC Readiness: FCO Green Yellow Red Type 1 3+ 2 1 Type 2 4+ 3 2 Type 3 4 3 2 FDRC 3 2 1
FDRC		9	2	22%	0	1	6		
US&R		28	27	96%	1	0	0	NJ TF-1 Partially Mission Capable	<ul style="list-style-type: none"> <li>Green = Available/FMC</li> <li>Yellow = Available/PMC</li> <li>Red = Out-of-Service</li> <li>Blue = Assigned/Deployed</li> </ul>
National IMAT		3	3	100%	0	0	0	West: Primary (On Call)	<ul style="list-style-type: none"> <li>Green: 3 available</li> <li>Yellow: 1-2 available</li> <li>Red: 0 avail (<i>Individual N-IMAT red if 50% of Section Chiefs and/or Team Leader is unavailable for deployment.</i>)</li> </ul>
Regional IMAT		13	6	46%	0	0	7	<u>Deployed:</u> Region I: WV (4273-WV) Region II: Frederick, MD 7/17-22 Region III: WV (4273-WV) Region IV: Team 1 to WV (4273-WV) Region V: OH (RNC 7/18-21) Region VI: Team 1 to TX (4266-TX) Region VII: TX (4272-TX)	<ul style="list-style-type: none"> <li>Green: &gt;6 teams available</li> <li>Yellow: 4 - 6 teams available</li> <li>Red: &lt; 4 teams available</li> </ul> <i>R-IMAT also red if TL Ops/Log Chief is unavailable &amp; has no qualified replacement</i>
MERS Teams		18	13	72%	0	0	5	<u>Deployed:</u> Denton: 3 teams to TX (4272-TX) Denver: 1 team to OH (RNC 2016) Denver: 1 team to WA (Readiness Exercise)	<ul style="list-style-type: none"> <li>Green = &gt;66% available</li> <li>Yellow = 33% to 66% available</li> <li>Red = &lt;33% available</li> </ul>

# FEMA Readiness - National & Regional Teams



National/Regional Teams									
Resource	Status	Total	FMC Available		Partially Available	Not Available	Status	Comments	Rating Criterion
NWC	Green	5	5	100%	0	0	Activated	Enhanced Watch for RNC (3:00 pm – 12:00 am EDT July 18-21) for RNC	<ul style="list-style-type: none"> <li>• Green = FMC</li> <li>• Yellow = PMC</li> <li>• Red = NMC</li> </ul>
NRCC	Green	2	2	100%	0	0	Not Activated		
HLT	Green	1	1	100%	0	0	Activated		
DEST	Green						Not Activated		
RRCCs	Green	10	9	90%	0	1	Activated	Region V RRCC at Partial Activation (3:00 pm -12:00 pm EDT July 18-21) for RNC	
RWCs/MOCs	Green	10	10	100%	0	0	Not Activated		



# FEMA

**FEMA's mission is to support our citizens and first responders to ensure that as a nation we work together to build, sustain, and improve our capability to prepare for, protect against, respond to, recover from, and mitigate all hazards.**