



# **FEMA**

## **Daily Operations Briefing**

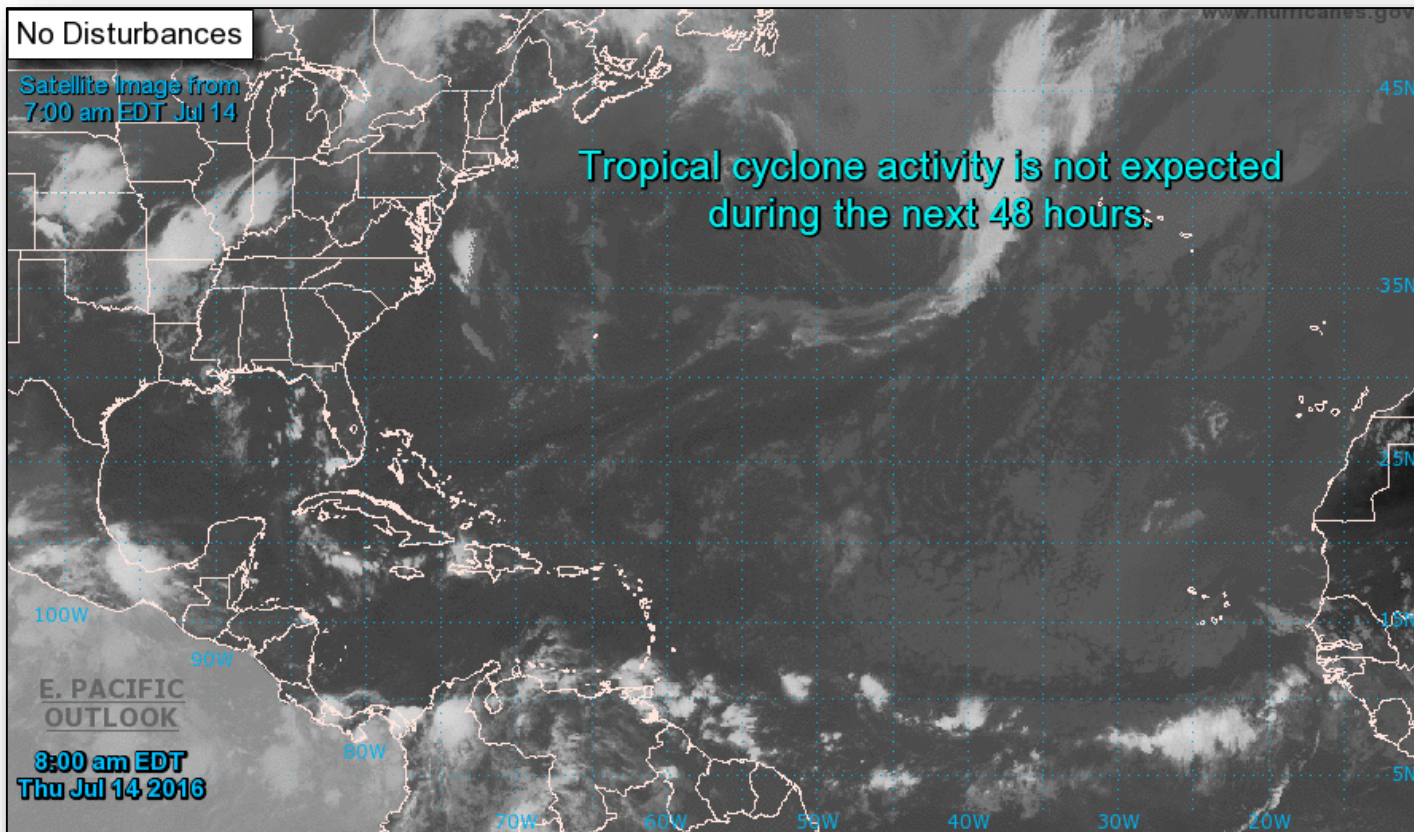
**Thursday, July 14, 2016**

**8:30 a.m. EDT**

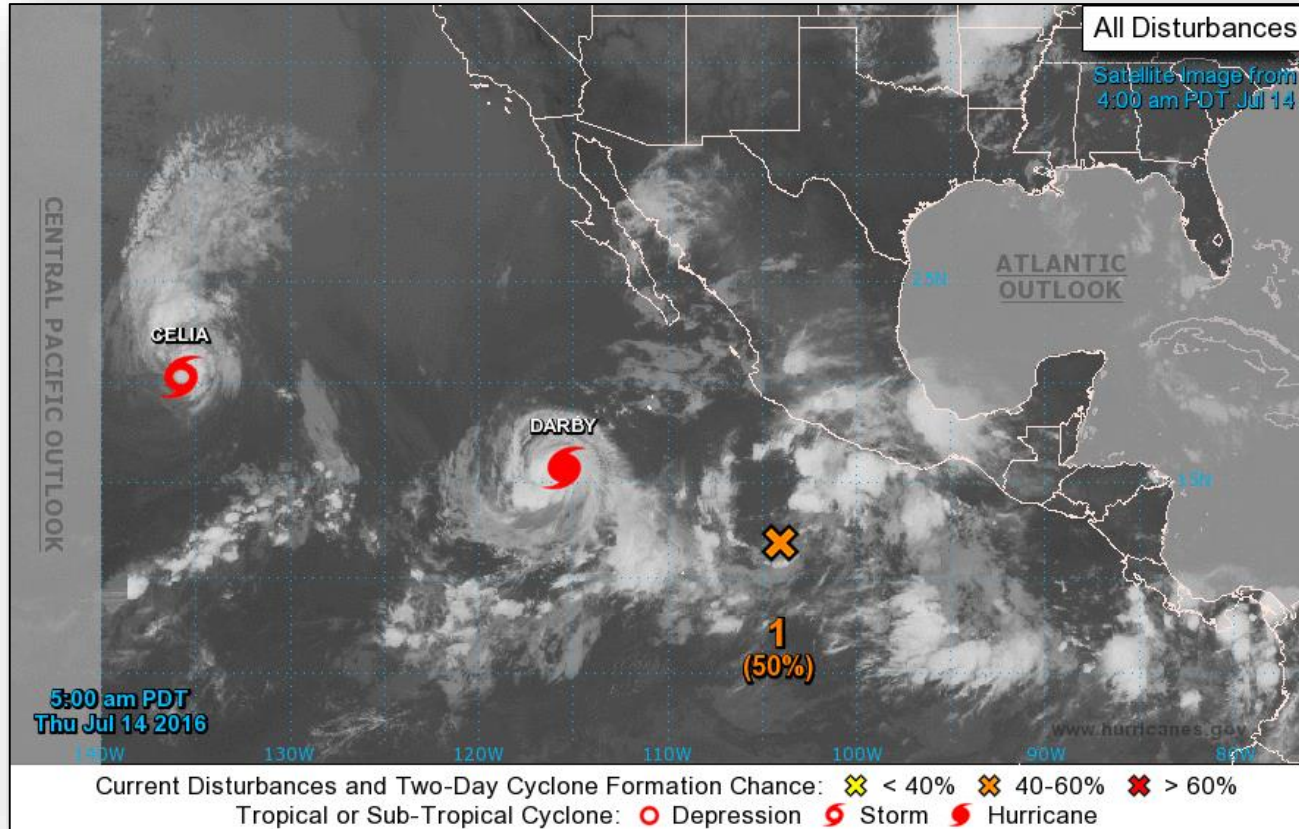
# Tropical Outlook - Atlantic



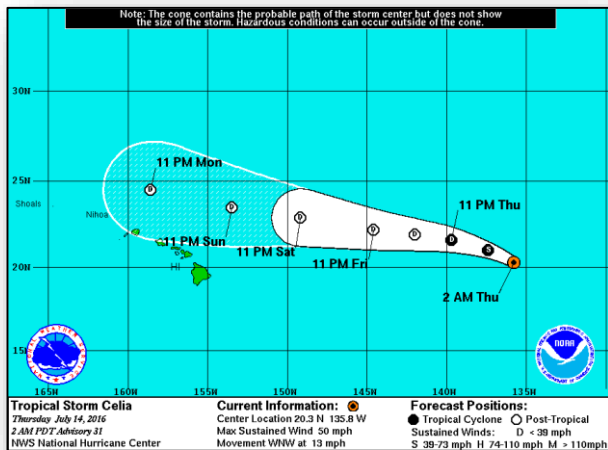
FEMA



# Tropical Outlook - Eastern Pacific

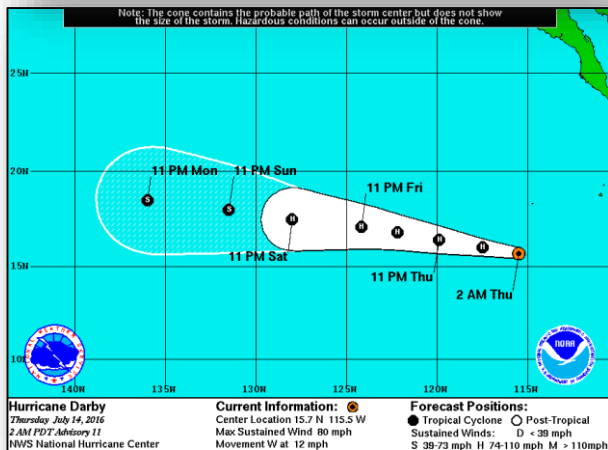


# Tropical Outlook - Eastern Pacific



## Tropical Storm Celia: (Advisory #31 as of 5:00 a.m. EDT)

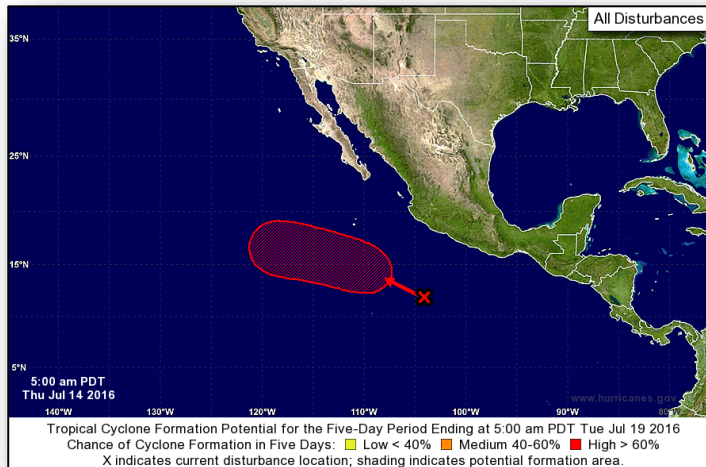
- Located 1,325 miles east of Hilo, Hawaii
- Moving WNW at 13 mph
- Maximum sustained winds 50 mph
- Maintaining strength however, expected to become a tropical depression tonight
- No coastal watches or warnings in effect



## Hurricane Darby: (Advisory #11 as of 5:00 a.m. EDT)

- Located 615 miles SW of the southern tip of Baja, California
- Moving westward at 12 mph
- Maximum sustained winds increased to 80 mph
- Little change in strength however, some increase in forward speed expected over the next few days
- No coastal watches and warnings in effect

# Tropical Outlook - Eastern Pacific

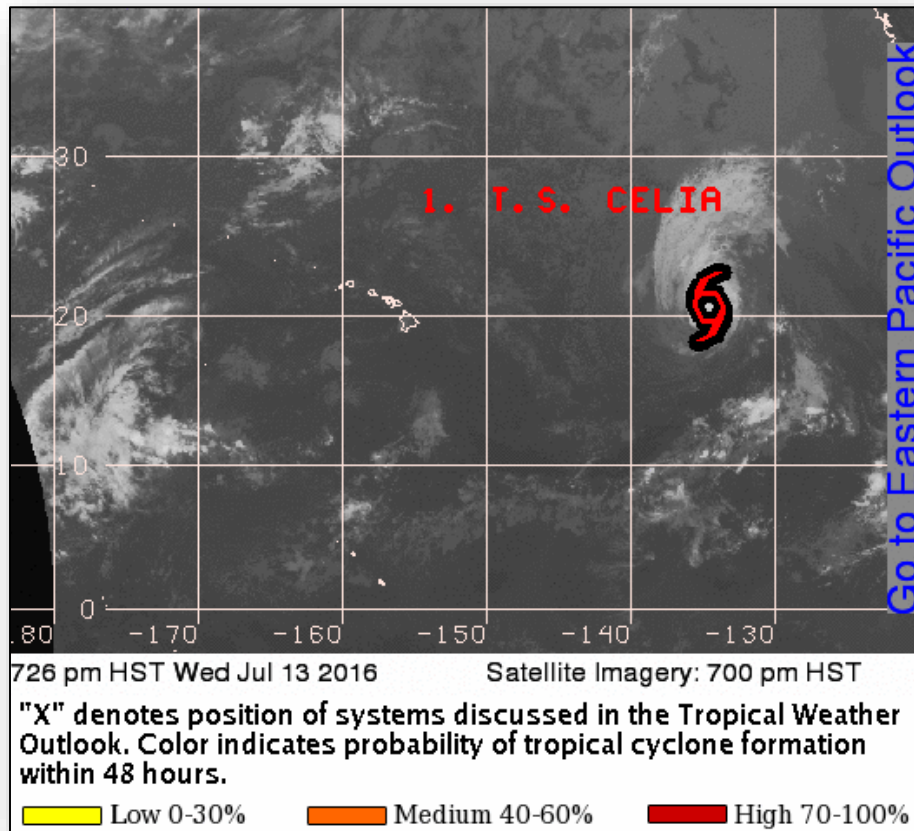


## **Disturbance #1:** (as of 2:00 a.m. EDT)

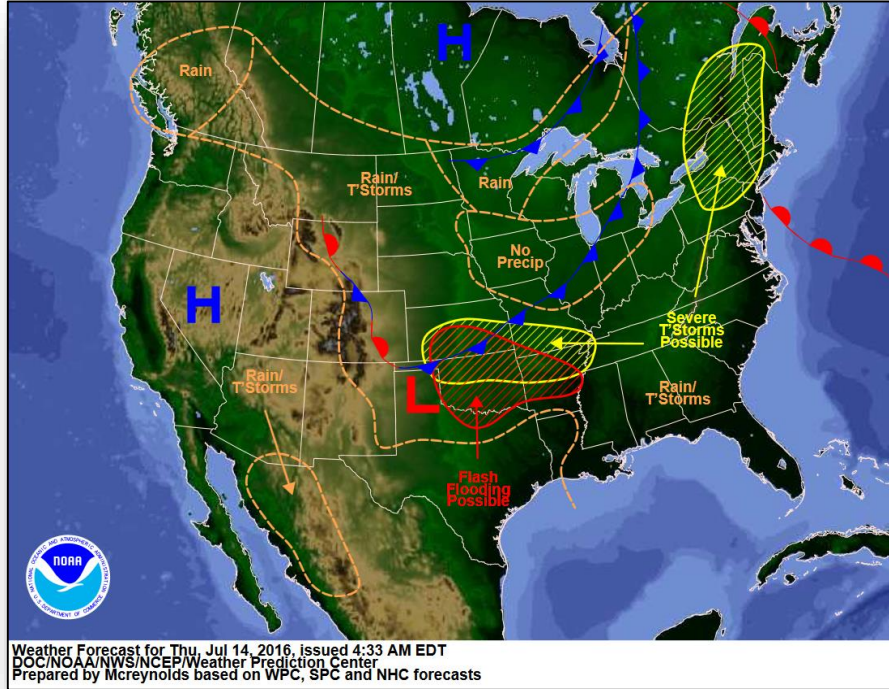
- Located several hundred miles south of Acapulco, Mexico
- Moving WNW at 10 to 15 mph
- Cloudiness and showers have continued to increase
- Expected to become a tropical depression over the weekend
- Formation chance through 48 hours (MED) near 40%
- Formation chance through 5 days (HIGH) 90%



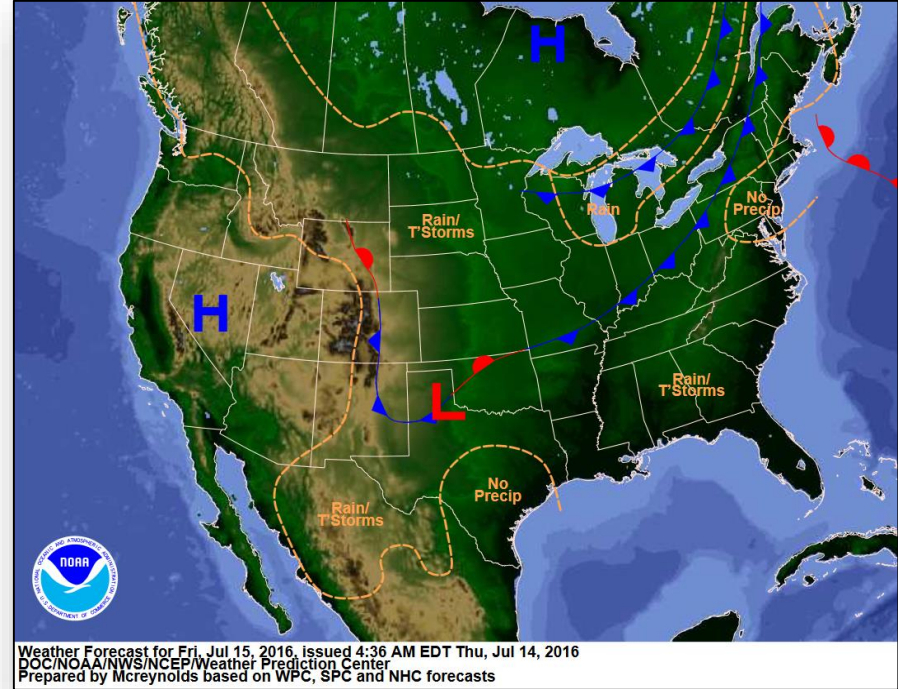
# Tropical Outlook - Central Pacific



# National Weather Forecast

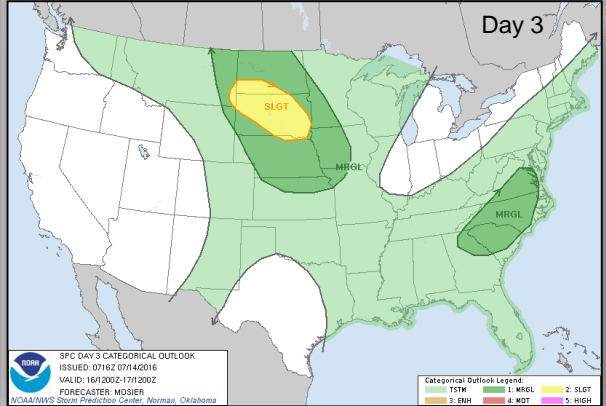
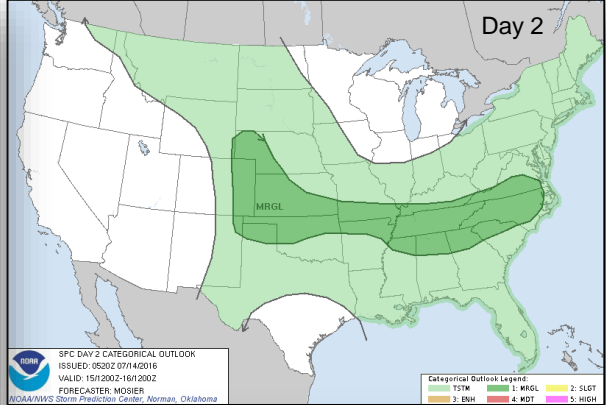
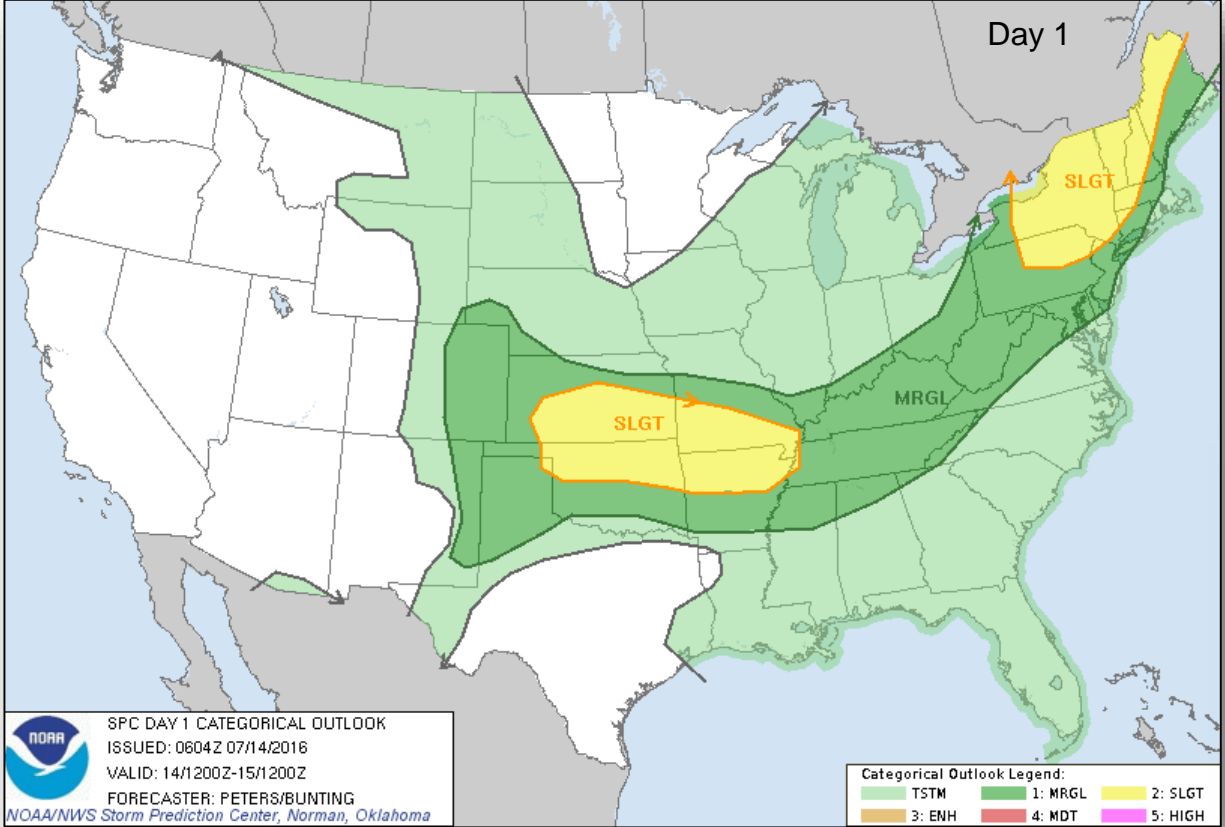


*Today*



*Tomorrow*

# Severe Weather Outlook - Days 1 - 3

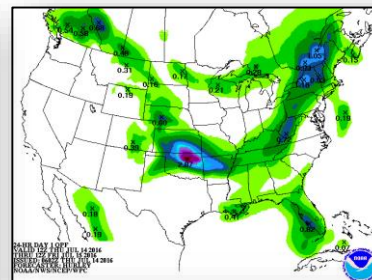
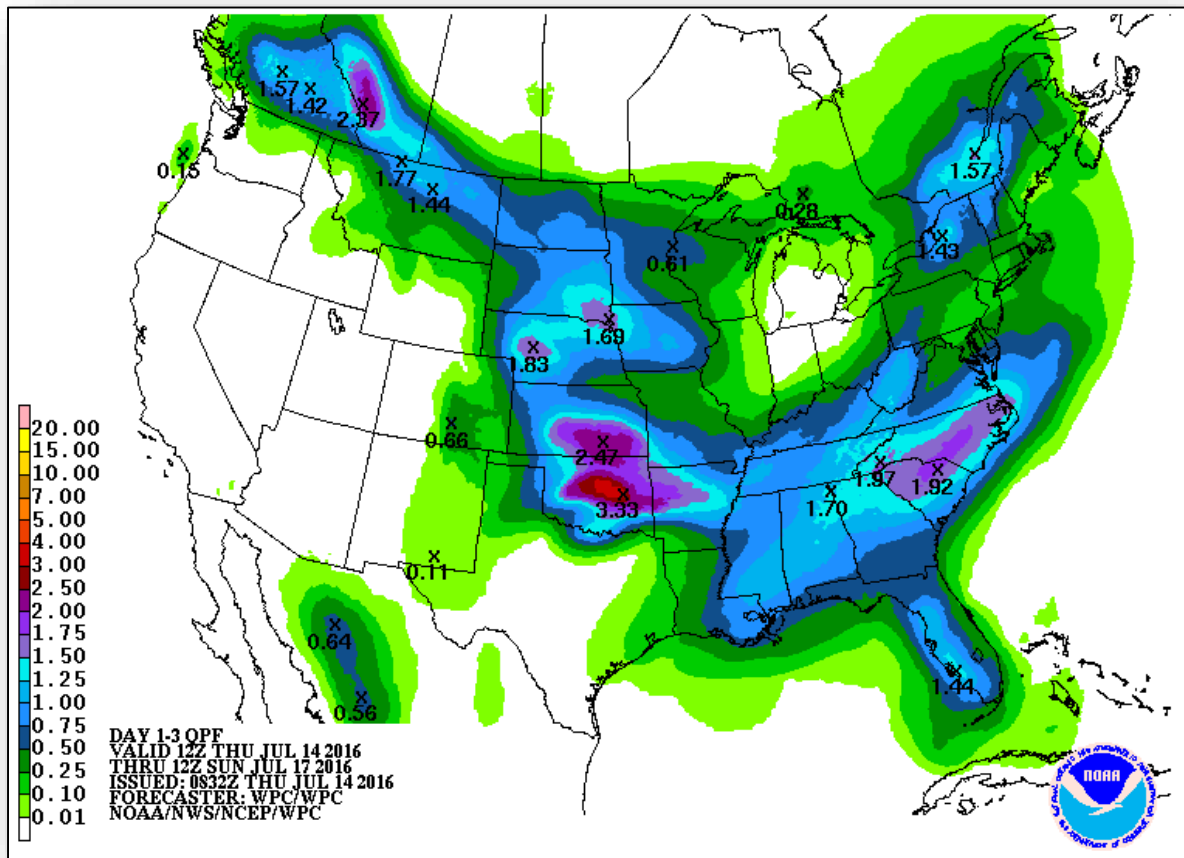




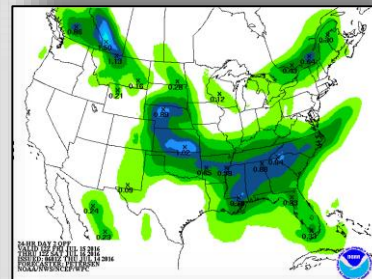
# Precipitation Forecast – Days 1-3



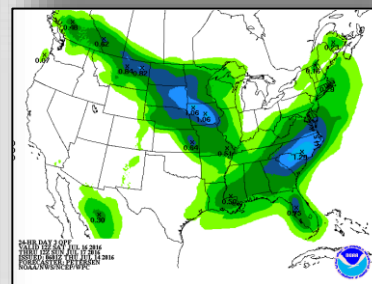
FEMA



Day 1

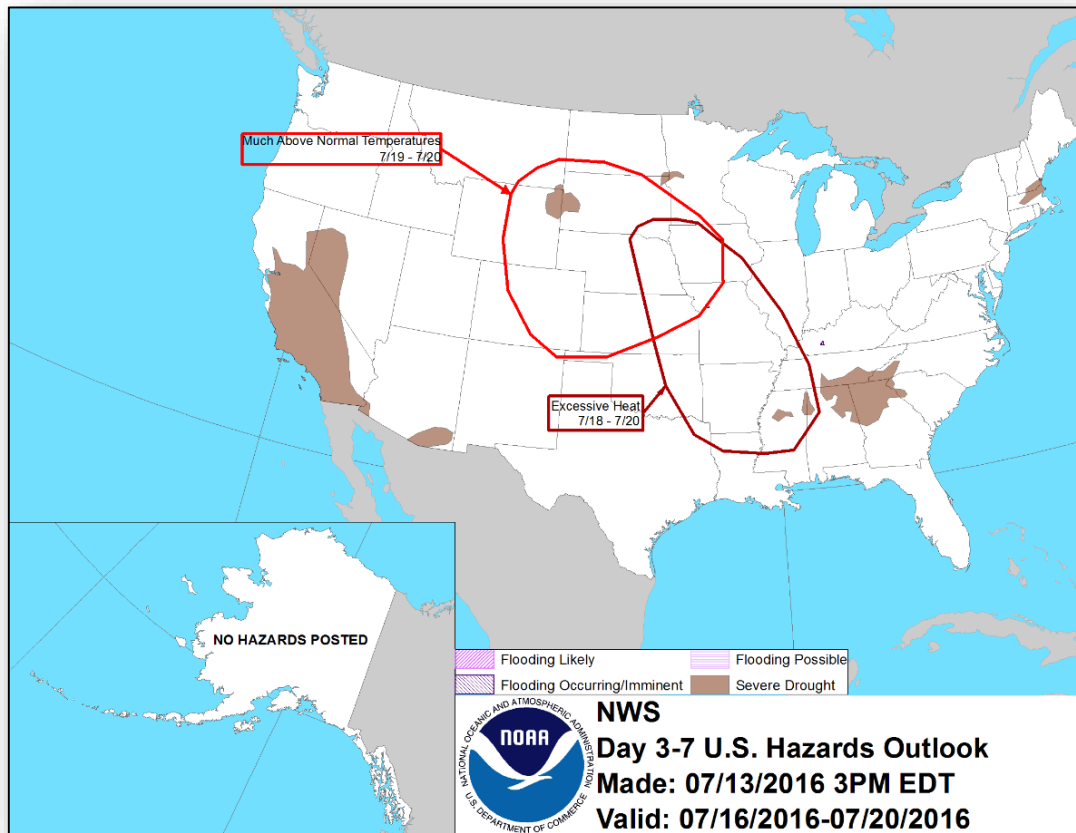


Day 2



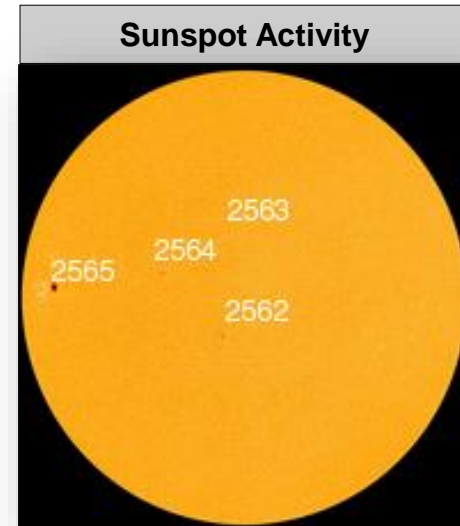
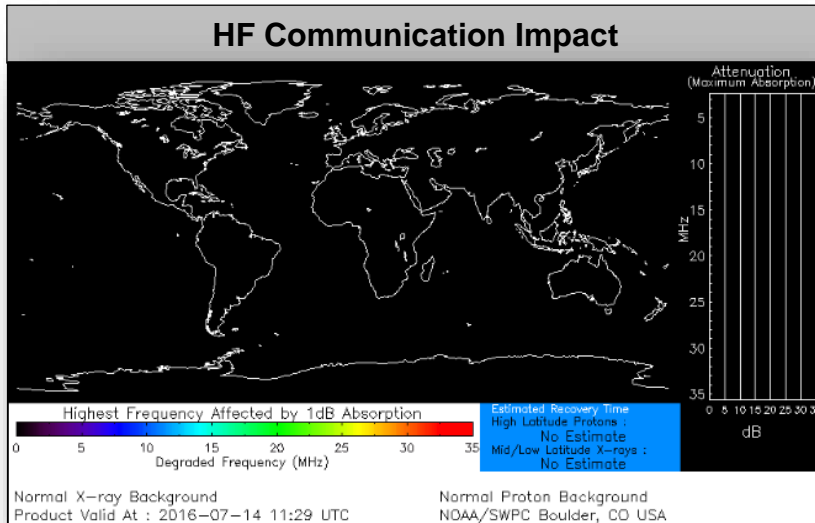
Day 3

# Hazards Outlook - July 16-20



# Space Weather

	Past 24 Hours	Current	Next 24 Hours
<b>Space Weather Activity</b>	<b>None</b>	<b>None</b>	<b>None</b>
Geomagnetic Storms	None	None	None
Solar Radiation Storms	None	None	None
Radio Blackouts	None	None	None



# Wildfire Summary



Fire Name (County)	FMAG #	Acres Burned	% Contained	Evacuations (Residents)	Structures Threatened	Structures Damaged / Destroyed	Fatalities / Injuries
<b>Colorado</b>							
Cold Springs (FINAL) (Boulder County)	FEMA-5133-FM-CO	528	80%	Lifted	1,000 homes	0/16 (8 homes)	0 / 1



# Joint Preliminary Damage Assessments



Region	State / Location	Event	I/PA	Number of Counties		Start – End
				Requested	Complete	
VII	KS	Severe Storms and Flooding May 22 - 31, 2016	PA	31	18	6/20 – TBD
VIII	MT	Severe Storms and Tornado June 10-11, 2016	PA	1	1	7/12 – 7/13

# Disaster Requests & Declarations



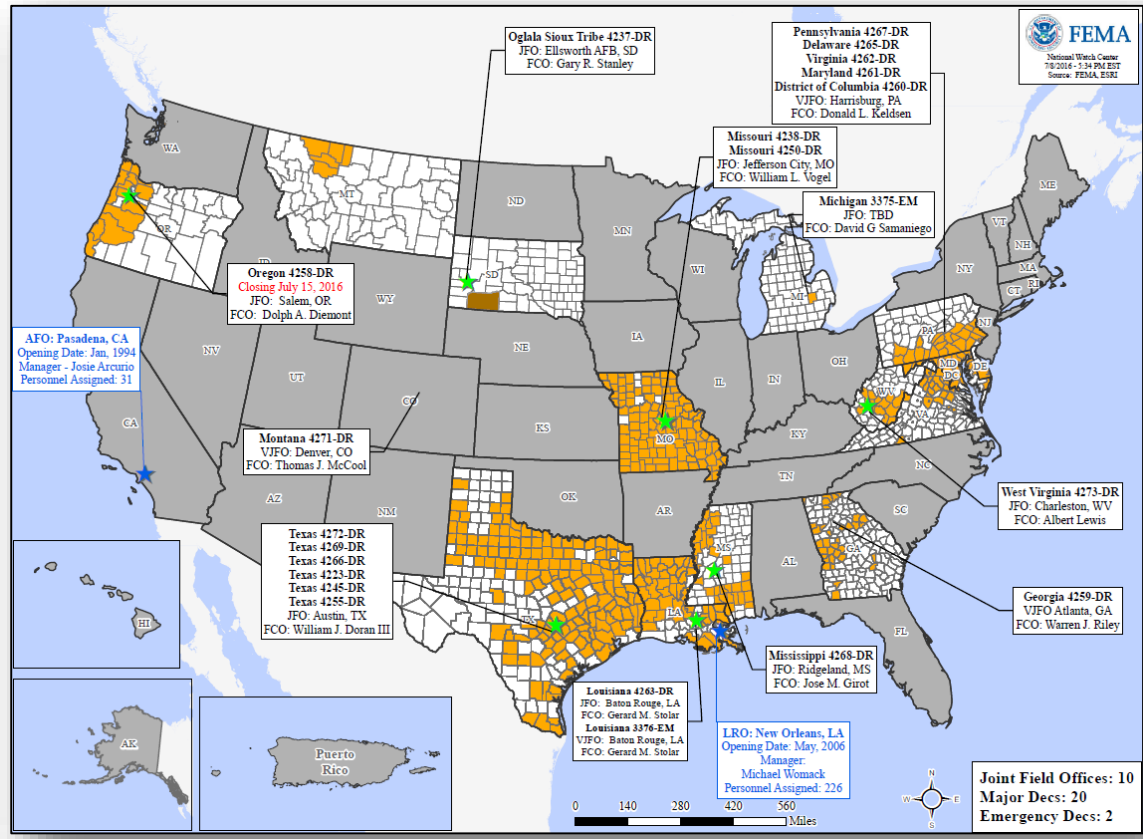
<b>Declaration Requests in Process</b>		<b>Requests APPROVED (since last report)</b>	<b>Requests DENIED (since last report)</b>
<b>2</b>	<b>Date Requested</b>	<b>0</b>	<b>0</b>
<b>FL – EM Toxic Algae Blooms</b>	<b>July 6, 2016</b>		
<b>OK – DR Severe Storms, Tornadoes, Straight-line Winds, and Flooding</b>	<b>July 7, 2016</b>		

# Disaster Amendments



Amendment	Effective Date	Action
Amendment No. 6 to FEMA-4273-DR-WV	July 13, 2016	Adds 6 counties for PA Adds 1 county for PA (Categories A and C-G)

# Open Field Offices as of July 14, 2016





# FEMA Readiness - Deployable Teams & Assets



Deployable Teams & Assets									
Resource	Status	Total	FMC Available		Partially Available	Not Available	Detailed, Deployed, Activated	Comments	Rating Criterion
FCO	Yellow	36	14	39%	0	3	19		OFDC Readiness: FCO Green Yellow Red Type 1 3+ 2 1 Type 2 4+ 3 2 Type 3 4 3 2 FDRC 3 2 1
FDRC	Green	10	3	30%	0	1	6		
US&R	Green	28	27	96%	1	0	0	NJ TF-1 Partially Mission Capable	
National IMAT	Green	3	3	100%	0	0	0	West: Primary (On Call)	<ul style="list-style-type: none"> <li>Green: 3 available</li> <li>Yellow: 1-2 available</li> <li>Red: 0 avail (<i>Individual N-IMAT red if 50% of Section Chiefs and/or Team Leader is unavailable for deployment.</i>)</li> </ul>
Regional IMAT	Green	13	7	54%	0	0	6	<u>Deployed:</u> Region I: WV (4273-WV) Region II: NY (FRAP) through July 15 Region III: WV (4273-WV) Region IV: Team 1 to WV (4273-WV) Region VI: Team 1 to TX (4266-TX) Region VII: TX (4272-TX)	<ul style="list-style-type: none"> <li>Green: &gt;6 teams available</li> <li>Yellow: 4 - 6 teams available</li> <li>Red: &lt; 4 teams available</li> </ul> R-IMAT also red if TL Ops/Log Chief is unavailable & has no qualified replacement
MERS Teams	Yellow	18	7	39%	0	0	11	<u>Deployed:</u> Denton: 4 teams to TX (4272-TX) Frederick: 1 team to WV (4273-WV) Maynard: 1 team to NH (Ex Patriot Clipper) Thomasville: 1 team to WV (4273-WV) Thomasville: 1 team to WA (Readiness Exercise) Denver: 1 team to OH (RNC 2016) Denver: 1 team to WA (Readiness Exercise) Bothell: 1 team to WA (Readiness Exercise)	<ul style="list-style-type: none"> <li>Green = &gt;66% available</li> <li>Yellow = 33% to 66% available</li> <li>Red = &lt;33% available</li> </ul>

# FEMA Readiness - National & Regional Teams



National/Regional Teams									
Resource	Status	Total	FMC Available		Partially Available	Not Available	Status	Comments	Rating Criterion
NWC		5	5	100%	0	0	Watch / Steady State		<ul style="list-style-type: none"> <li>• Green = FMC</li> <li>• Yellow = PMC</li> <li>• Red = NMC</li> </ul>
NRCC		2	2	100%	0	0	Not Activated		
HLT		1	1	100%	0	0	Activated		
DEST							Not Activated		
RRCCs		10	10	100%	0	0	Not Activated		
RWCs/MOCs		10	10	100%	0	0	Not Activated		

# Common Operating Picture

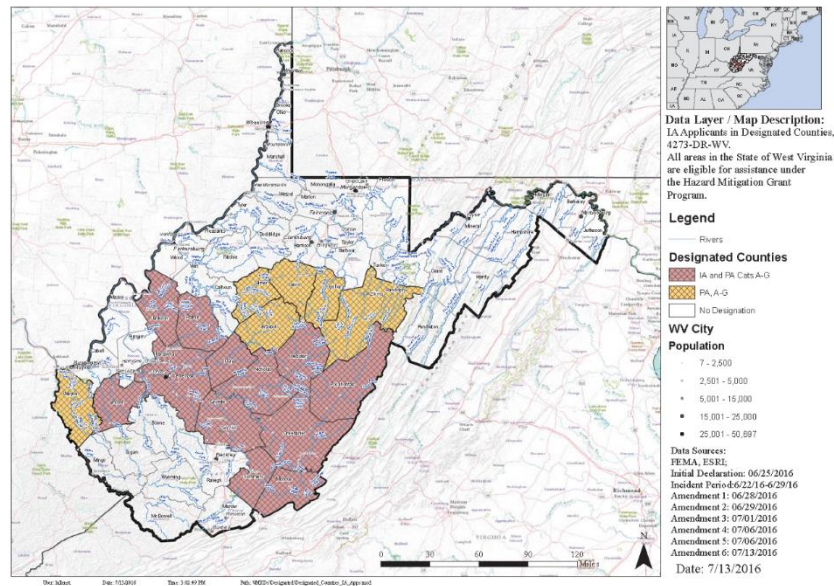
FEMA-4273-DR-WV

Declared: 06/25/2016 Incident Period: 06/22/2016 to 06/29/2016

06/22/2016 (day 18)

## COUNTY DESIGNATIONS

**FEMA-4273-DR-WV, West Virginia Rivers and Towns**  
Incident: Severe Storms, Flooding, Landslides, and Mudslides Amendment No. 6



FEMA-4273-DR-WV		
Date Issued	Declaration	Counties
06/25/2016	4273-DR-WV	Grants Individual Assistance for Greenbrier, Kanawha and Nicholas counties and Public Assistance for Greenbrier, Kanawha and Nicholas counties for emergency protective measures (Category B), including direct federal assistance, under the Public Assistance Program.
06/28/2016	Amendment No. 1	Is amended to include Individual Assistance for Clay, Fayette, Monroe, Roane, and Summers counties. Public Assistance for Clay, Fayette, Monroe, Roane, and Summers counties for emergency protective measures (Category B), including direct federal assistance, under the Public Assistance program.
06/29/2016	Amendment No. 2	Is amended to include Individual Assistance for Pocahontas and Webster counties. Public Assistance for Pocahontas and Webster Counties for emergency protective measures (Category B), including direct federal assistance, under the Public Assistance program.
07/01/2016	Amendment No. 3	Is amended to include Individual Assistance for Jackson and Lincoln counties. Public Assistance for Jackson and Lincoln counties for emergency protective measures (Category B), including direct federal assistance, under the Public Assistance program.
07/06/2016	Amendment No. 4	Is amended to include Public Assistance (Categories A and C-G) for Clay, Fayette, Greenbrier, Jackson, Kanawha, Monroe, Nicholas, Pocahontas, Roane, Summers, and Webster counties (already designated for Individual Assistance and emergency protective measures (Cat B), including direct federal assistance, under the Public Assistance program).
07/06/2016	Amendment No. 5	Is amended to close the incident period 06/29/2016.
07/13/2016	Amendment No. 6	Is amended to include Public Assistance (Categories A and C-G) for Braxton, Gilmer, Lewis, Randolph, Upshur, and Wayne Counties and Lincoln County for Public Assistance (Categories A and C-G) already designated for Individual Assistance and emergency protective measures Category B, including direct federal assistance, under the Public Assistance program.

# Common Operating Picture

FEMA-4273-DR-WV

Declared: 06/25/2016 Incident Period: 06/22/2016 to 06/29/2016

06/22/2016 (day 18)

## Priorities and Objectives

7 a	Support survivors, with/without access and functional needs, in shelters and communities in designated counties.
14	Identify housing solutions in coordination with Housing Task Force, WV Agencies, Mass Care and all stakeholders.
12 a	Expedite identification of available, accessible and suitable sites for temporary housing units.
4 a	Provide joint accessible messaging on recovery efforts and available assistance through all means of communication available (traditional media, social media, websites, advisories, shelters locations, etc.).
5 b	Conduct assessments for debris clearance operations and identify hazardous materials for proper disposal in concert with Debris Task Force.
3 b	In coordination with the State, identify and open designated accessible DRCs/BRCs.
15	Coordinate with State and county officials to assess critical infrastructure capabilities with emphasis on schools and wastewater treatment plants.
11	Ensure the safety, security, and accountability of all personnel.



# Common Operating Picture

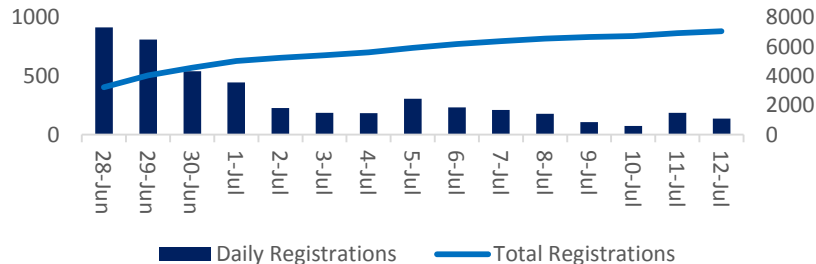
FEMA-4273-DR-WV

Declared: 06/25/2016 Incident Period: 06/22/2016 to 06/29/2016

06/22/2016 (day 18)

## Individual Assistance (As of COB 07/13/2016)

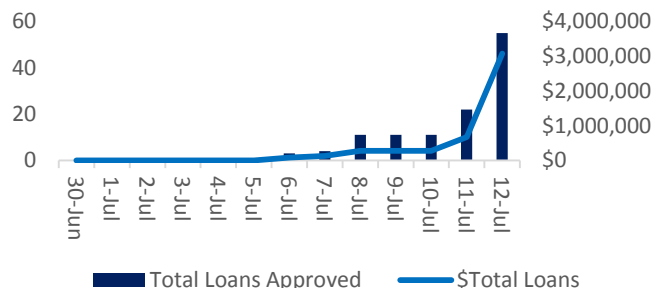
### Registrations-Cumulative



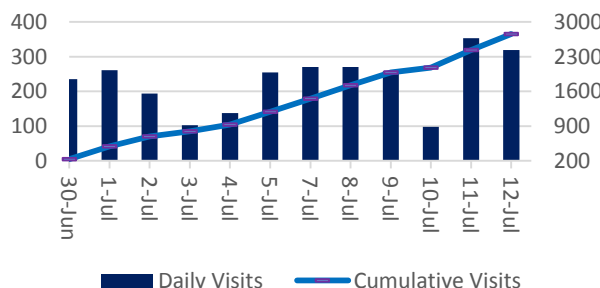
### IA Summary

Total Registrations (Designated Counties)	7,056	IHP Eligibility Rate (source: NPSC)	62.30%
<b>Individuals and Households Program (IHP)</b>		<b>Housing Assistance (HA)</b>	
Total Approved for IHP	3,581	Total Approved for HA	3,445
IHP Amount Disbursed	\$27,237,630	HA Disbursed	\$23,021,061
<b>Max Awards</b>		<b>Other Needs Assistance (ONA)</b>	
Max Awards Total	181	Total Approved for ONA	1,159
Max Awards Disbursed	\$5,973,600	ONA Disbursed	\$4,216,569
Inspections Completed = 5,417 (95.67%)			

### SBA Loans



### Total DRC Visits



### DSA Summary

Total Current Deployed Staff: 143	
Peak Deployed Staff: 143	
Survivor Interactions	9,726
Survivor Registrations	546
Whole Community Referrals	167
Case Updates	46
Private Sector Visits	547

# Common Operating Picture

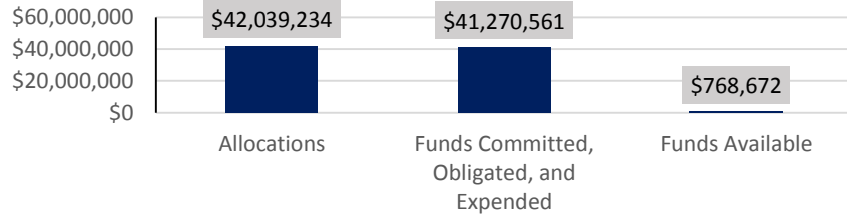
FEMA-4273-DR-WV

Declared: 06/25/2016 Incident Period: 06/22/2016 to 06/29/2016

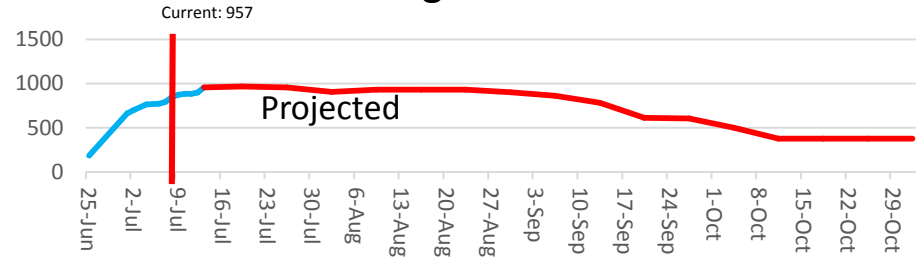
06/22/2016 (day 18)

## Finance & Staffing (As of COB 07/13/2016)

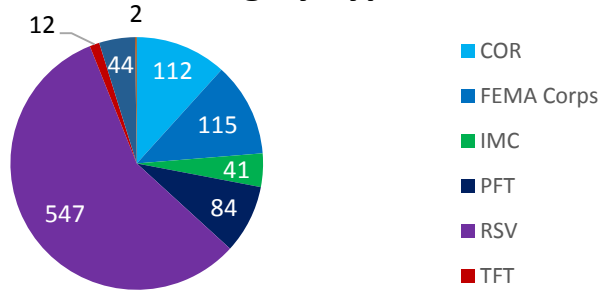
### Finance



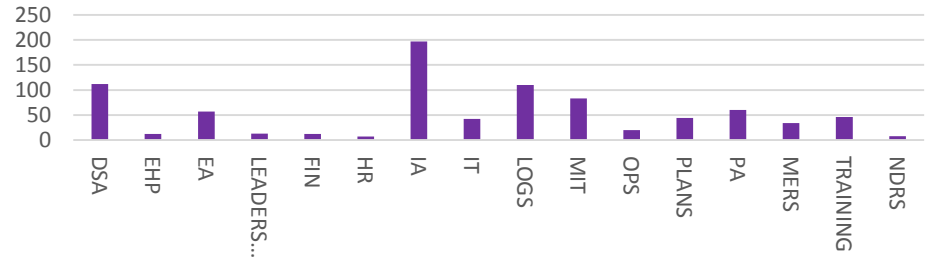
### Staffing Over Time



### Staffing by Type



### Staffing by Program



# Common Operating Picture

FEMA-4273-DR-WV

Declared: 06/25/2016 Incident Period: 06/22/2016 to 06/29/2016

06/22/2016 (day 18)

## Training and Qualifications (As of COB 07/13/2016)

Staffing by Type	Candidate	Qualified	Trainee	Unqualified	Grand Total
COR	11	79	21	1	112
FEMA Corps	0	0	115	0	115
IMC	6	30	5	0	41
PFT	4	71	9	0	84
RSV	9	478	60	0	547
TFT	0	8	4	0	12
Other Federal	0	0	19	25	44
Other State/Local	0	0	2	0	2
<b>Grand Total</b>	<b>30</b>	<b>666</b>	<b>235</b>	<b>26</b>	<b>957</b>

### Qualified/Trainee Data:

Candidate: 55 (6%)

Qualified: 620 (70%)

Trainee: 199 (23%)

Unqualified: 10 (1%)

### Coach/Evaluators :

There are 260 Coach Evaluators attached to the incident.

### Courses Offered or Scheduled:

L-458 Applicant Services Program Spec. – Jul 11-15

Concur Training- Jul 13

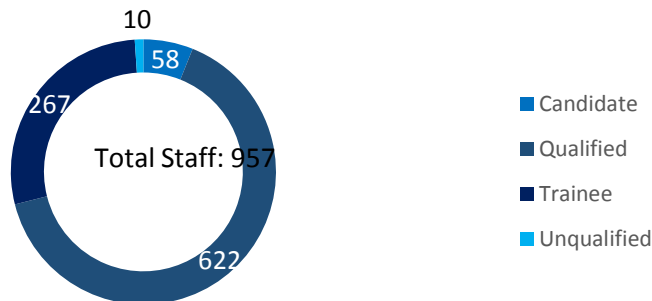
DF-314 Effective Feedback – Jul 18

Procurement under FEMA Awards – Jul 18

DF-304 Time Management – Jul 20

DF-418 Resolve Conflict – Jul 20

## Staffing by Deployment Proficiency



# Common Operating Picture

FEMA-4273-DR-WV

Declared: 06/25/2016 Incident Period: 06/22/2016 to 06/29/2016

06/22/2016 (day 18)

## Best Practices

### DSA

- Partnering with WV National Guard to reach isolated population in Clay County
- DSA and Disability Integration partnering to better serve survivors with disabilities and access and functional needs
- Using State two way radio system to maintain communications with crews in location with poor cellular coverage.

### EHP

- Deployed regional EHP staff out from PDAs onward.
  - Regional Environmental Officer was on the ground at initial start up. REO was able to identify issues early and attempt to staff appropriately. REO was also included in early decision making with disaster senior staff. REO could direct EHP operational decisions and make sure they were in line with regional expectations.
  - Regional EHP staff were sent on PDAs to get message out and take in initial info.
  - Regional EHP staff get critical disaster experience.
- Focused on immediate deployment of experienced EHP leadership, to include IM COREs for Public Assistance, Debris, and Housing.
- Early EHP involvement in DRC locations and logistics operation to attempt to keep federal investments out of the floodplain.

### External Affairs

- Experience staff deployed first, that are well trained to jump right into the operation. Staff that wasn't trained or lacked equipment to do their job were unable to meet the need once on the ground.
- Immediate office briefings with Congressional Staff. In this disaster each office had a briefing with multiple staff members (including some members) by July 1, within 6 days of the declaration, as well as a site visit with 2 offices. Phone contact was made on with all offices on Monday, June 27.

### Planning

- First IAP produced within 24 hours of arriving in Charleston.
- First COP produced 6/29
- Virtual Situation Room live on 6/29

### COP

- IMAT Teams to set up Branch Structure
- Establishment of Task Forces—Mass Care, Housing, Debris, Schools
- Early deployment of FDRC
- WV VOADS & VAL; GIS Sync WNG & DHSEMA



# Common Operating Picture

FEMA-4273-DR-WV

Declared: 06/25/2016 Incident Period: 06/22/2016 to 06/29/2016

06/22/2016 (day 18)

## Best Practices

### Mass Care

- Utilized IA staff from the DRCs and VALs along with a Red Cross caseworker to form 3-person shelter transition crews.
- DSA provided one of their NPSC Advisors who handled difficult issues from the field teams by working directly with Inspection Services and the National Coordination Team to speed up movement of funds to the survivors.

### DTS Improvements

- Using the DTS system is a simple system however there is an opportunity for improvement as it pertains to the actual requesting personnel for deployment. Prior to DTS, the ADD system required someone to call you which gave a quicker response time to accept or decline a request. The way the system is set up a person has 24 hours to respond, therefore it took 4 to 5 days to get our initial ordering personnel because others had declined.
- We do not have any cache of supplies in our region, therefore we must purchase all our supplies once we have an address for a JFO. On this deployment it is now day 10 and we have not received any of the contract supplies.

### Service Branch

- Army Communication Issues
  - Lack of Coms (network access and telephony) in the Armory was advised by Regional IT with experience from the previous year's deployments to the area.
  - Armory was used as a Reception Center and also to deploy. This resulted in soldiers who were pulling long shifts and sleeping on the floor.
  - Army National Guard who were deployed for up to 30 hour shifts had to utilize cots in the corner for sleep while a reception area and setup for users went on around them.
  - Disconnect in communication between JFO and IMAT teams.
- Initial Deployment Communication Issues
  - Both local and IMAT were ordering staff for the same needs when a central call would have been more beneficial to all.
    - The process to get fully qualified EP active IT staff was ineffective as those reservist who were on PANA were getting multiple requests for deployment and needed to turn down multiple calls resulting in a higher number of declines.
    - This also complicated deployments further as the Reservists had to call the POC to explain the PANA turndown in an effort to not receive a negative note to their record.



# FEMA

**FEMA's mission is to support our citizens and first responders to ensure that as a nation we work together to build, sustain, and improve our capability to prepare for, protect against, respond to, recover from, and mitigate all hazards.**